

# Oblique Photography Discussion Panel



Johnson County, KS  
MAGIC 2008

[aims.jocogov.org](http://aims.jocogov.org)

# Overview

- Presentation of product
- How obtained?
- Resolution, Accuracy, funding, ROI, future plans?
- Who is using?
- How are they using it?
- Benefits?
- Problems?

# Background

- Johnson County, Kansas is about 500 square miles
- Part of the Kansas City Metro area
- Population is estimated over 525,000 people
- Still a mix of Urban/Rural
- Appraiser and AIMS had reviewed obliques for several years

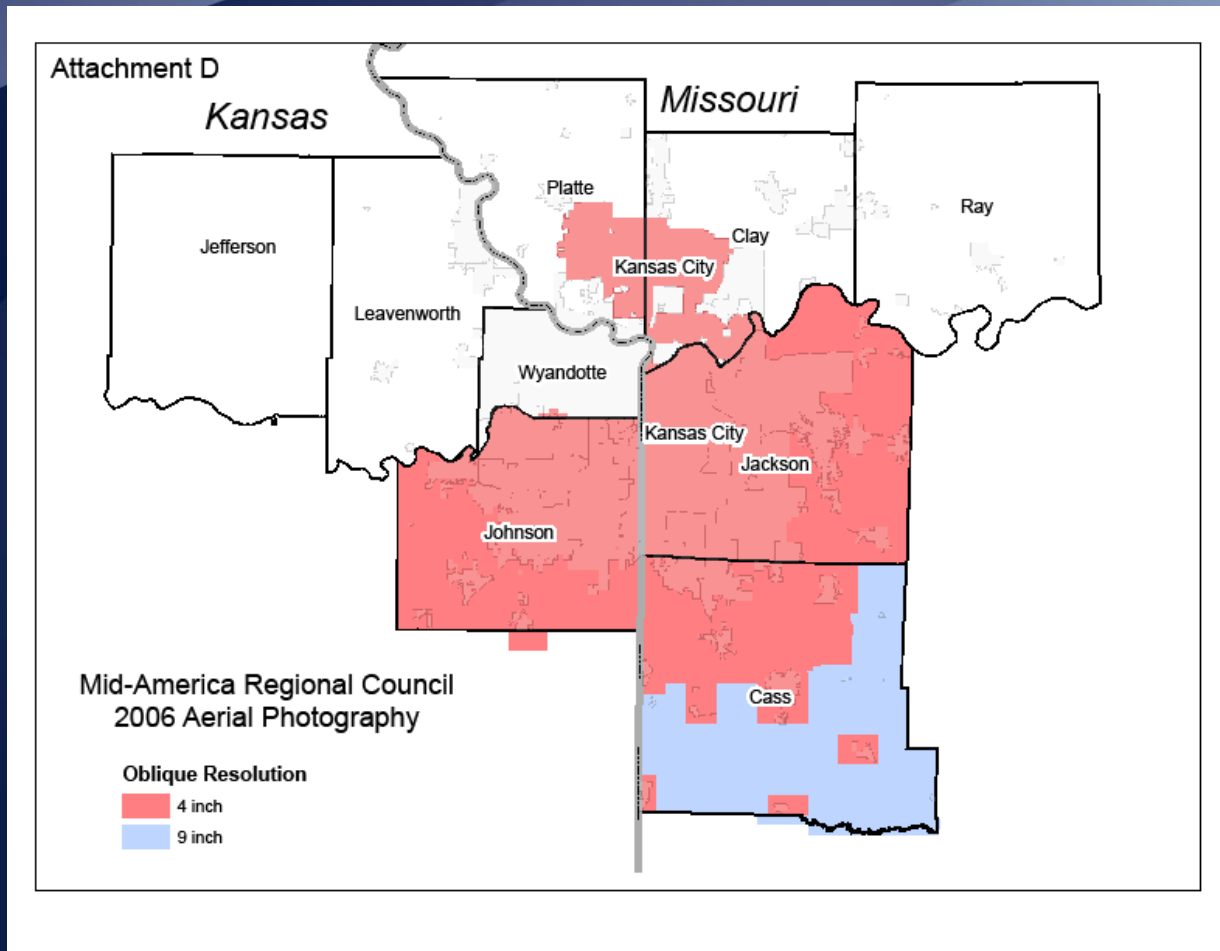
# Background



# Requirements

- Single Regional RFP for both Ortho/Oblique
- Flight conditions
  - Spring, leaf-off, no snow/haze, etc
  - 10:00 am to 2:00 pm
  - When sun angle is not less than 30 degrees
- Ownership
- Accuracy

# MARC Region



# Product Description

- Regional flight flown Spring 2006
  - 2 Vendors responded
- 4 inch pixel resolution
- Minimum of 78 per square mile
- Approximately 42,000 images
- Approximately 280 GB

# 2008

- Renewal flight flown Spring 2008
- 3 inch resolution
- Minimum of 170 per Square mile
- Approximately 85,000 images
- Approximately 600 GB
- Should receive raw imagery to QC soon



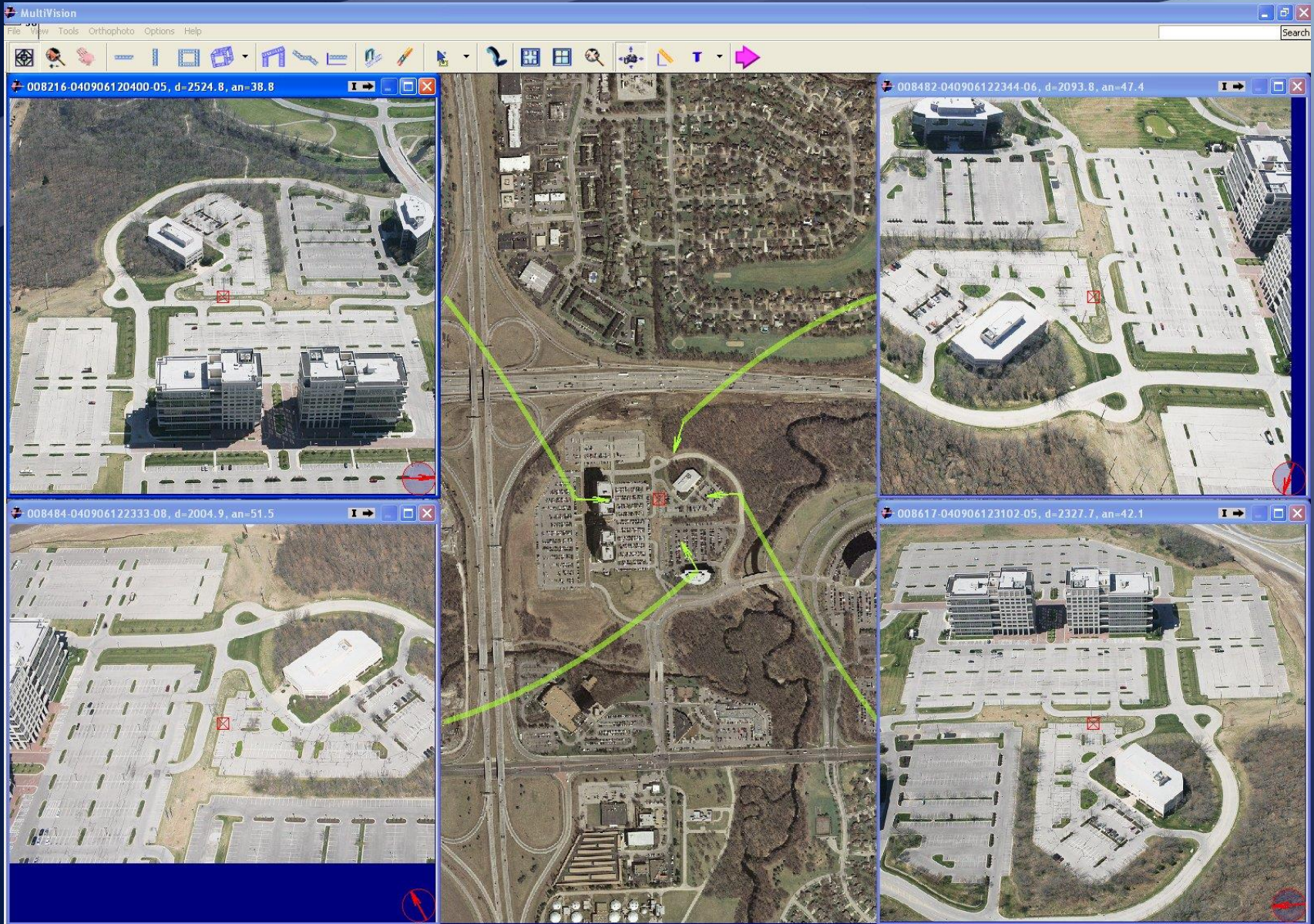
# Integration Challenges

- Large Size
- Format (ECW)
- “Closed systems”
- New Developing Technology

# Current Access

- Multivision
- Arcmap
- Web - Johnson County Online Mapping

# Multivision



# Multivision - SDE Access

**ArcSDE Connection Parameters Settings**

SDE Service Server Name:  Geodatabase User Name:

SDE Service Name:  Geodatabase User Password:

Geodatabase Name:  Geodatabase Data Version:

Data Provider Type:

**SDE Vector Layer Selection**

Select one ArcSDE Layer as Source

DEFAULT.Address\_PT  
DEFAULT.ADDRESS\_PT\_VW0  
DEFAULT.ADDRESS\_PT\_VW1  
DEFAULT.ADDRESS\_PT\_VW2  
DEFAULT.ADDRESS\_PT\_VW3  
DEFAULT.ADDRESS\_PT\_VW4  
DEFAULT.AddressHistory\_PT

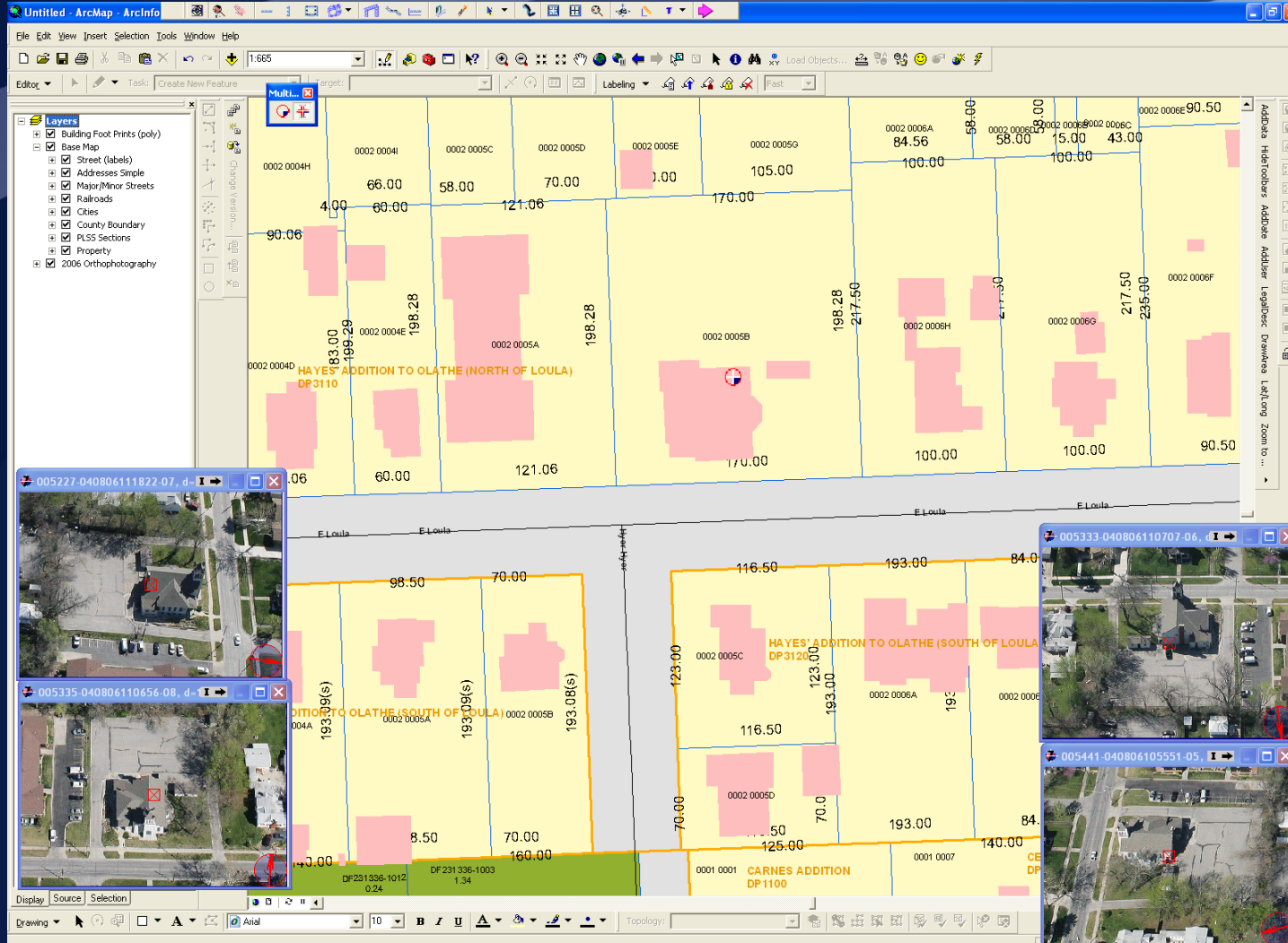
**Importing properties...**

Select fields for onscreen display

DEFAULT  
OBJECTID  
SUB\_CLASS  
ST\_STATUS  
PREV\_UNIQ  
UNIQ  
MODIFIED  
ROAD NAME



# Arcmap



# Web

**AIMS**  
AUTOMATED INFORMATION MAPPING SYSTEM

Johnson County Online Mapping

**LAYERS**


- Legend**
- Property Layers**
  - Property Dimensions
  - Property Lines
  - Property Polygons
  - Label: None
- Aerial Images**
  - 2006 Orthophoto - 0.5 ft
  - 2005 Orthophoto - 0.5 ft
  - 2003 Orthophoto - 0.5 ft
  - '98-'00 Orthophoto - 0.5 ft
- Planimetric Layers**
- Other Layers**
- Admin. Layers**
- School Layers**
- Utility Layers**

**Redraw**

330 Feet Across

Map Size:  Small  Medium  Large **Redraw** **Full Extent**

**Identify Results - Microsoft Internet Explorer**

Property	Location	School	Plat	Legal	Utilities	Image
Welcome Shannon <a href="#">Logout</a> <a href="#">Search</a> <a href="#">Print All</a> <a href="#">Map Feature</a>						
Primary Image(s)		View Obliques				
						
D275090030 J061 C2/03/2006						
2/8/2006						

Search For Location:  
  
(e.g. Address, Parcel Id, or Map No.)

**Locate It!**

Advanced Features

**Advanced Features**

**View this location in:**

- Microsoft Virtual Earth
- Google Maps
- Wikimapia
- AIMS Oblique Viewer

**Close**

**aims.jocogov.org**



North



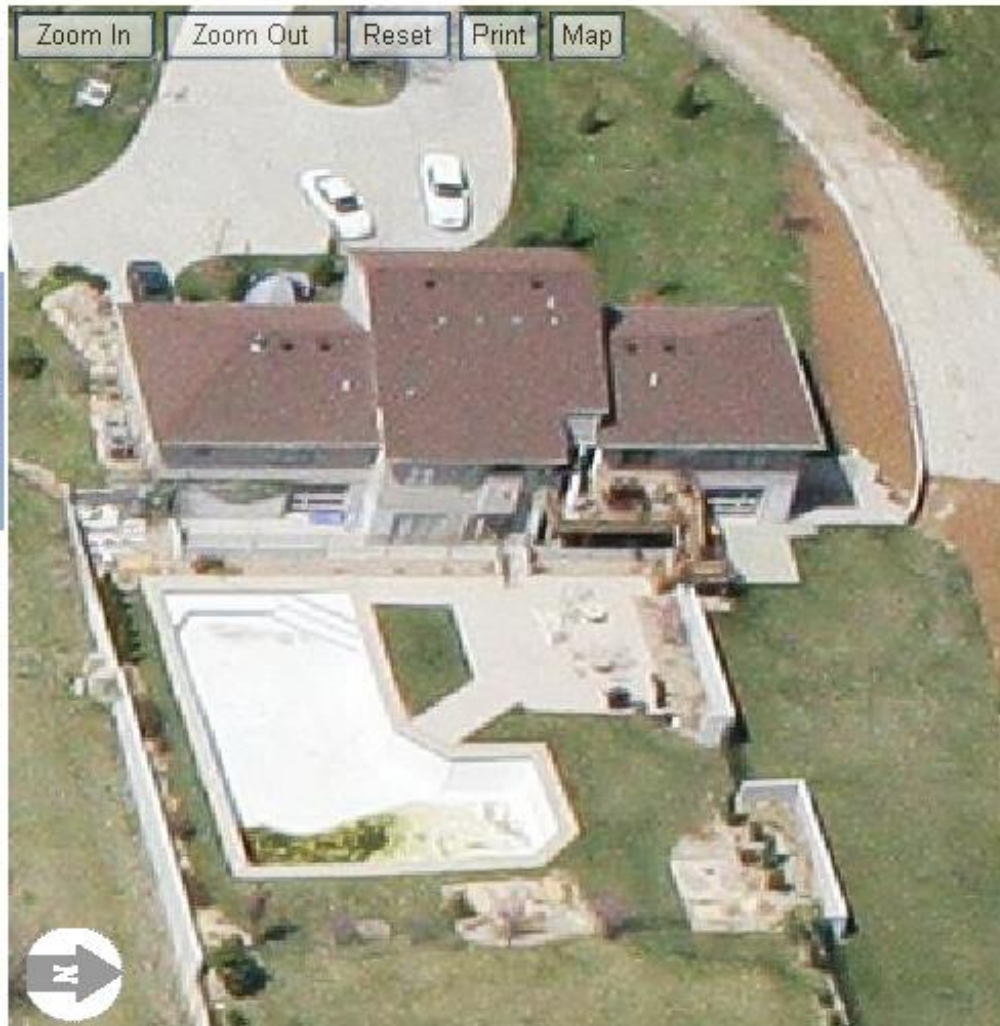
East



South



West







Johnson County Online Mapping

LAYERS

Legend

Property Layers

- Property Dimensions
- Property Lines
- Property Polygons

Label: None

Aerial Images

- 2006 Orthophoto - 0.5 ft
- 2005 Orthophoto - 0.5 ft
- 2003 Orthophoto - 0.5 ft
- 2002 Aerial - 1.0 ft
- 2001 Color Aerial - 2.0 ft
- '98-'00 Orthophoto - 0.5 ft
- 2000 Aerial - 1.0 ft
- 1998 Aerial - 2.0 ft
- 1996 Aerial - 2.0 ft

Planimetric Layers

Other Layers

Admin. Layers

School Layers

Utility Layers

Redraw



North



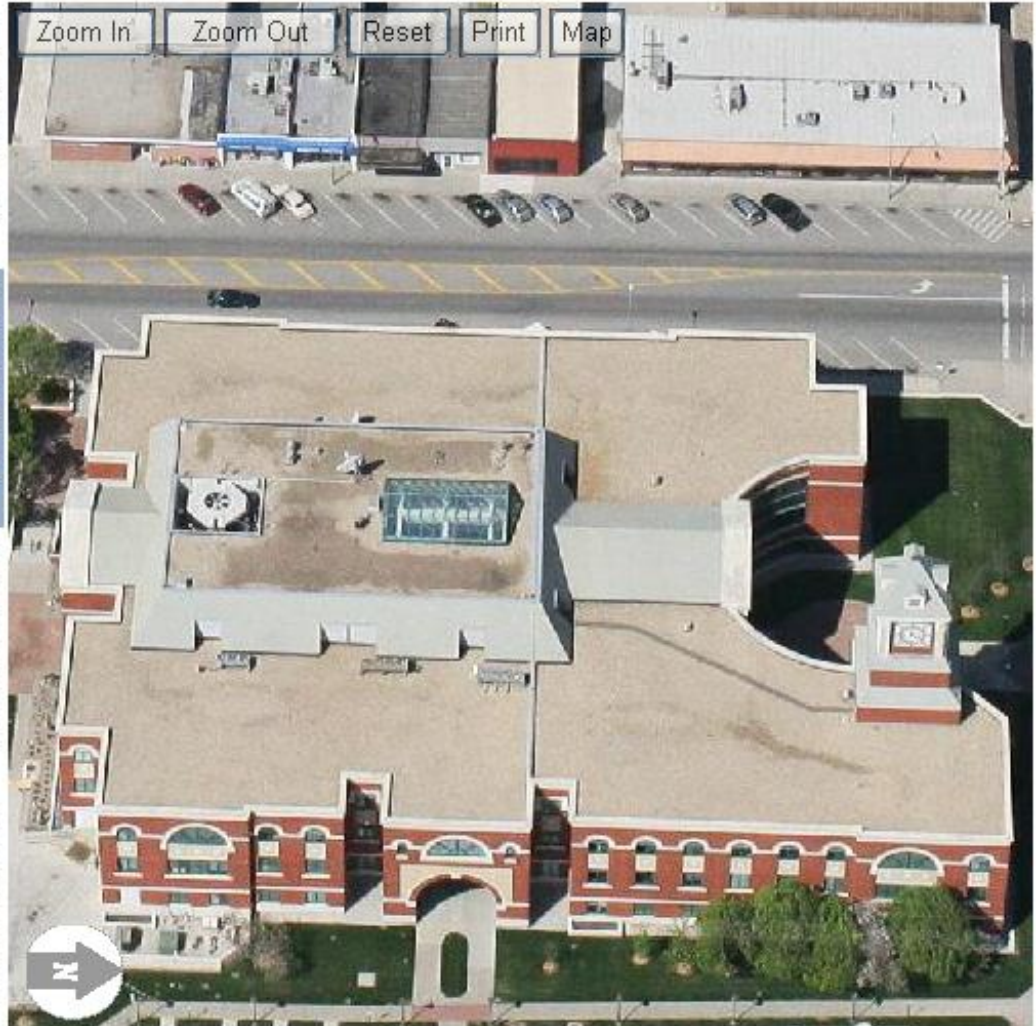
East



South



West



Zoom In Zoom Out Reset Print Map



# Users

- Johnson County Codes - Signage
- Overland Park and FBI
- Overland Park and Judges
- AIMS building updates
- Feature Capture - hydrants

# Users

- Fire preplanning and evacuations
- Appraisal
- Shawnee – front elevation
- 3D modeling

# Future Opportunities

- Orion
- Tritech
- Intergraph
- WebEOC

# Conclusions

- Work in progress
- Still Evaluating
- Use with SDE is possible
- Use on web is possible

Questions or comments?

***aims.jocogov.org***

Shannon Porter

[Shannon.porter@jocogov.org](mailto:Shannon.porter@jocogov.org)

913-715-2231

