



Structures on site.



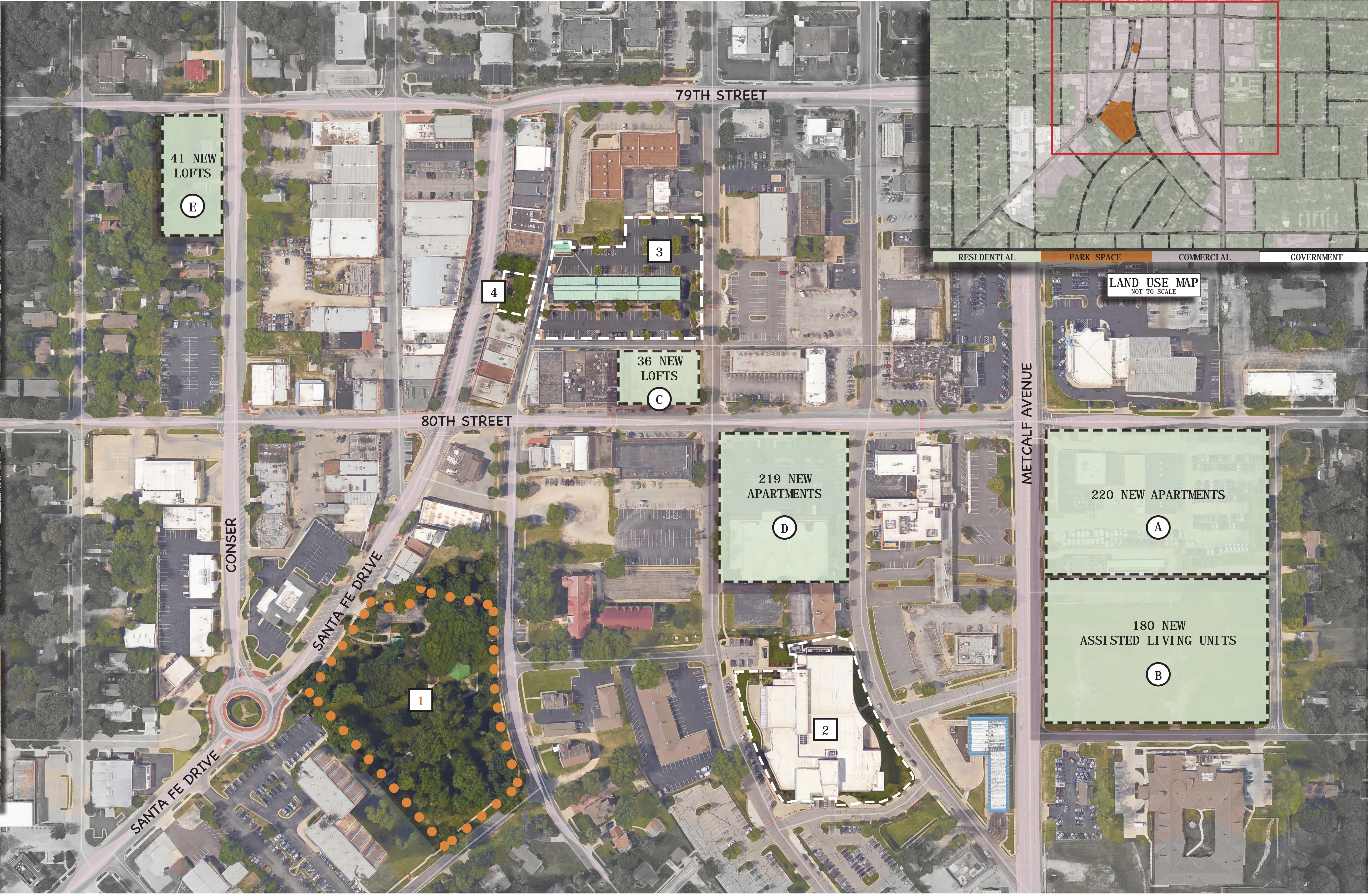
Edge conditions.



Empty, unused space.



Mature tree canopy.



**REFERENCE KEY**

**SIGNIFICANT PUBLIC SITES:**

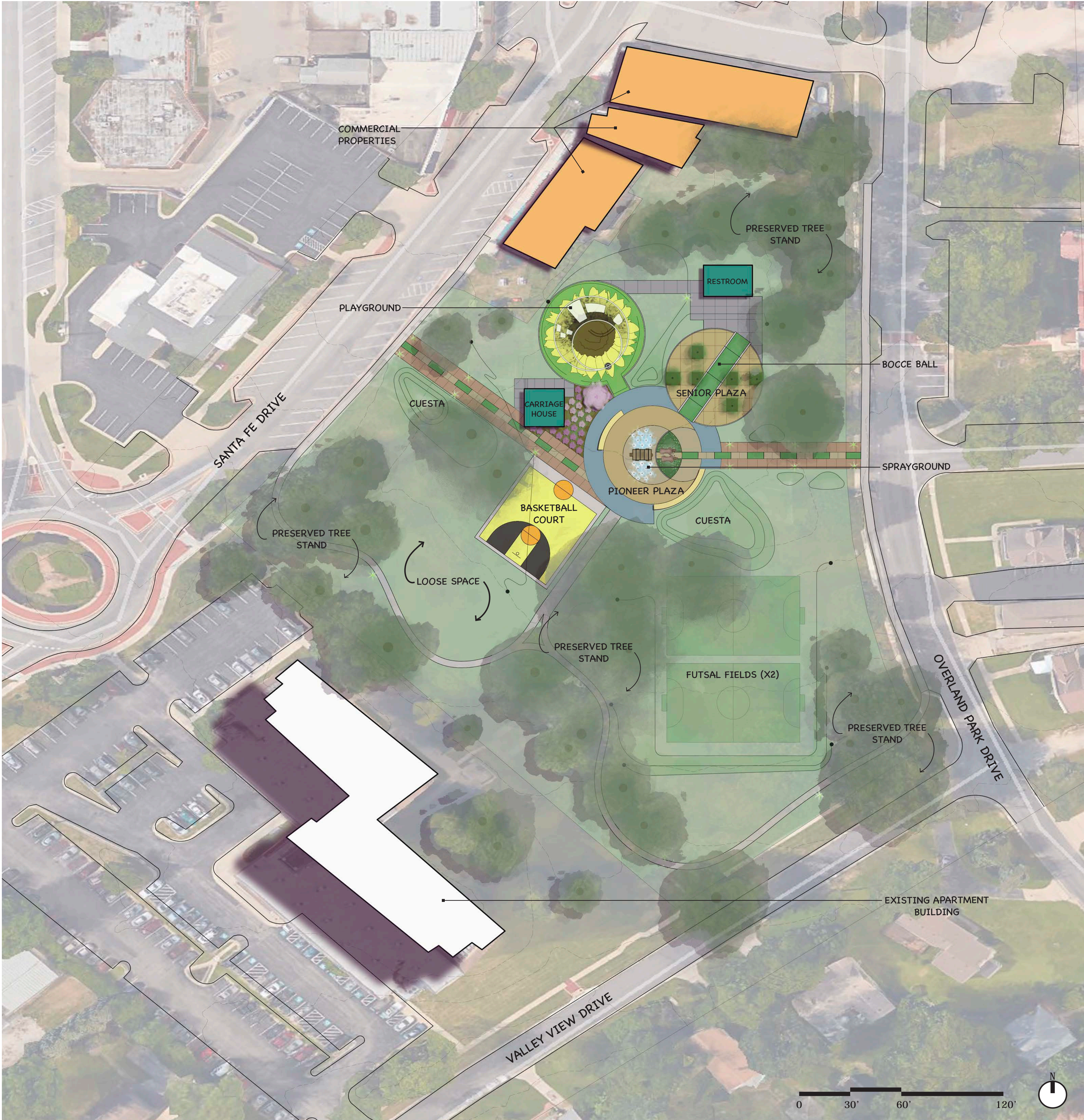
- 1. SANTA FE COMMONS PARK
- 2. BOB ROSS COMMUNITY CENTER
- 3. OVERLAND PARK FARMERS MARKET
- 4. CLOKTOWER PLAZA

**RECENTLY BUILT APARTMENTS:**

- A. AVENUE 80 APARTMENTS
- B. AVENUE 81 APARTMENTS
- C. THE MARKET LOFTS
- D. THE VUE APARTMENTS
- E. INTERURBAN LOFTS

**696 NEW APARTMENTS**  
 ADDED TO WITHIN 1/4 MILE OF SITE FROM 2018-2019.

**SANTA FE COMMONS PARK: PROJECT UNDERSTANDING**  
 OVERLAND PARK, KANSAS



Inviting, clear gathering space visible from park edges.

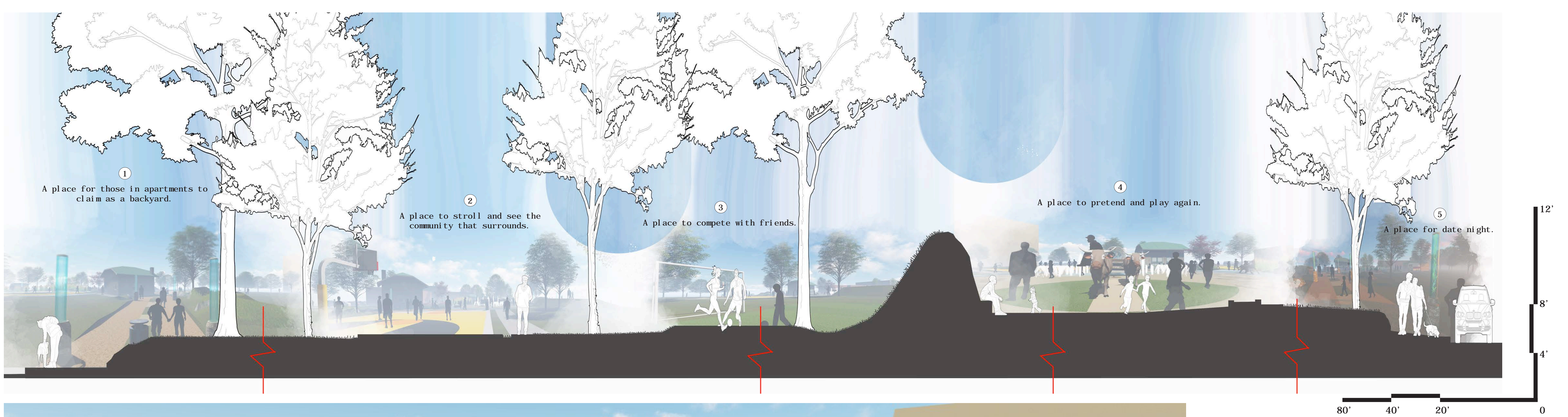


Diverse range of activities and opportunities.

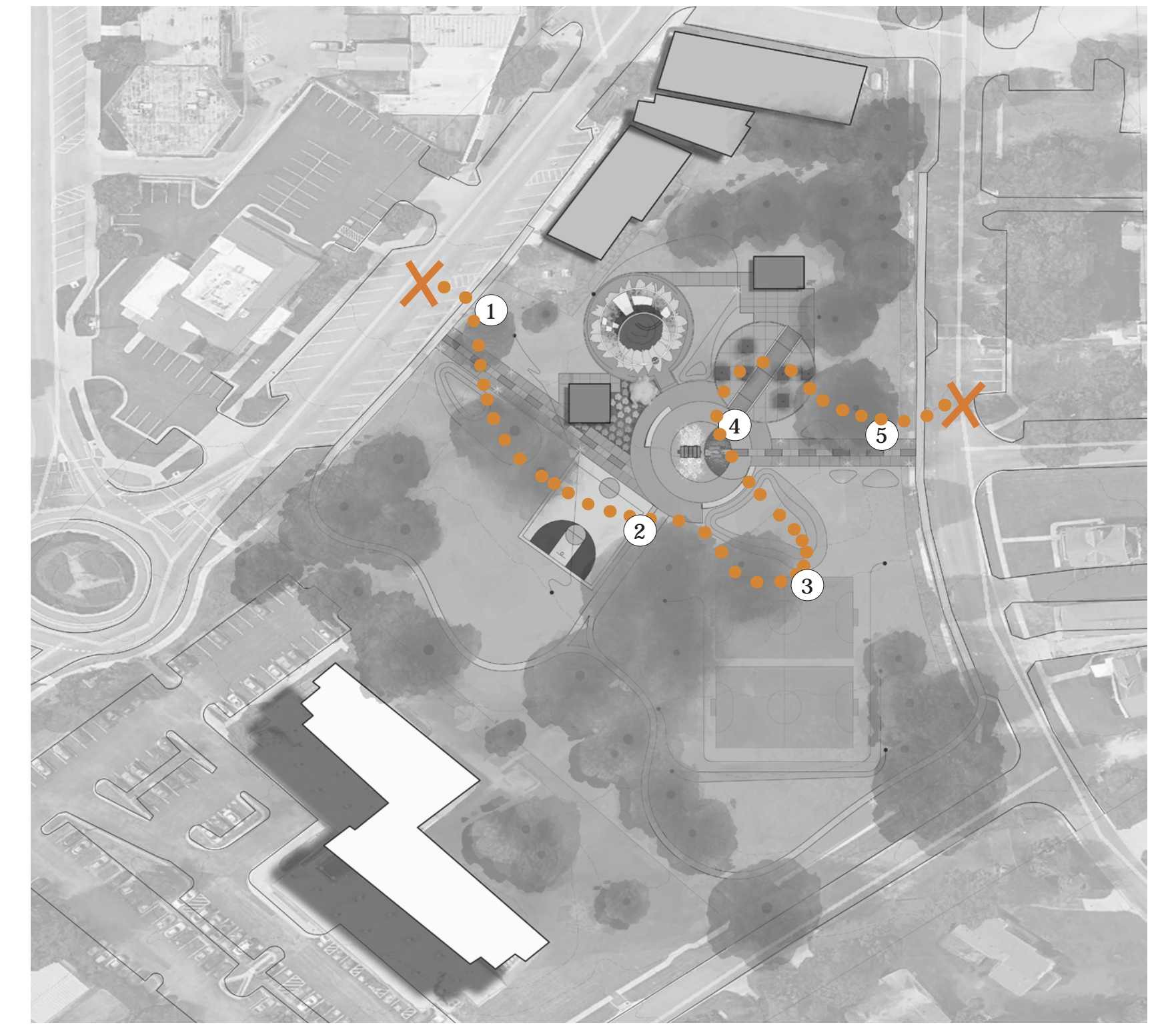


Preservation of existing structures and canopy.

**SANTA FE COMMONS PARK: REVIVAL OF PLAY IN THE PARK**  
 OVERLAND PARK, KANSAS



Experiential Transect Section



**MANIFESTO 2.0 ~ FROM OCTOBER 24TH, 2018**

As landscape architects, we need to be leaders. Our skill sets and work accentuate the human experience through ecological, environmental, and creative lenses. This creation process will hopefully better our world through intelligent decision making, as well as conscious efforts for what kind of environments we are designing. Like it or not, the urban footprint is the landscape of the future as the world's population continues to grow and we continue to become increasingly connected as a society. We must begin to look consciously at the world surrounding us and identify the good, the bad, and the gray areas. As we do this, we can identify places that need our design efforts the most.

Having said this, I think it is important not to take ourselves too seriously. We cannot improve the world alone; to design the urban fabric of tomorrow, we must work in unison with other professions and create the best possible solutions through teamwork. And most of all, we cannot forget to play in the sites we design. Play comes in many varieties and differs from age to age. I want to design places that inspire play for all ages.

As Landscape Architects, it is important to look for opportunities of play in our work. And most importantly, have fun ourselves with what we do.

**SANTA FE COMMONS PARK: REVIVAL OF PLAY IN THE PARK**  
OVERLAND PARK, KANSAS