

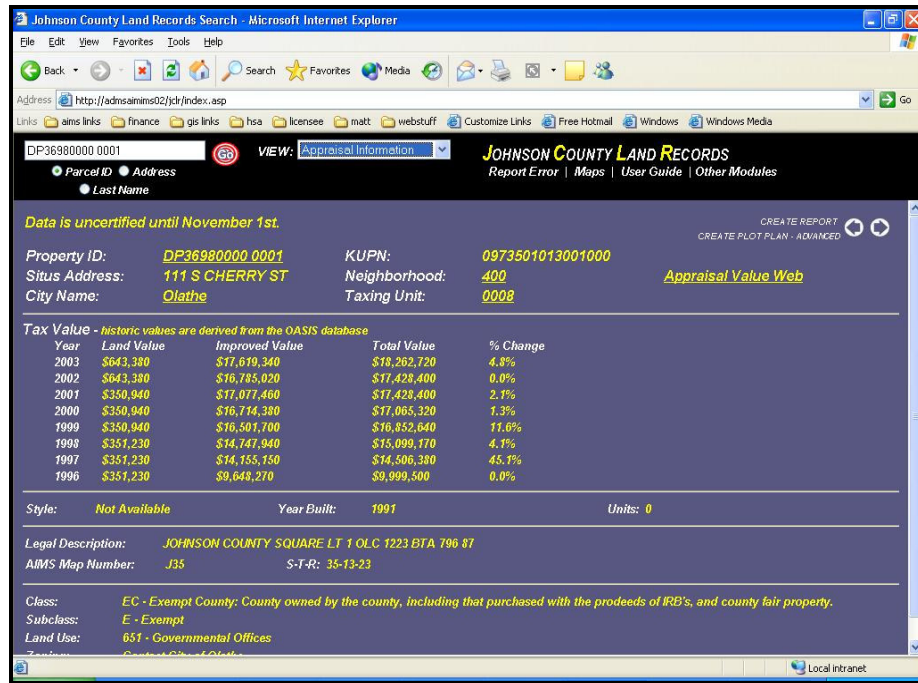


Johnson County Land Records (JCLR)

Comprehensive GIS Solutions for Johnson County

Pricing

Not available at this time.



Johnson County Land Records (JCLR)

JCLR is a web-based application that provides centralized, open access to land record data (e.g., owner, situs address, legal description, appraisal, zoning, tax, plat), geographic data (e.g., parcel map, aerial photography, administrative districts), and scanned documents (e.g., pictures of houses and buildings). It also includes functions for creating a plot plan, buffering parcels, and downloading property attribute data. It is a one-stop resource for conducting land records research.

JCLR enables an end user to view the geographic database maintained by AIMS and other county departments. In addition to the map image, a user can view information about the geographic features.

Users can view county features such as:

- ▶ Aerial Photos
- ▶ Appraisal Characteristics
- ▶ Owner Information
- ▶ House and Building Images
- ▶ Address and Tax Information
- ▶ Legal Descriptions
- ▶ Scanned Documents
- ▶ Buffer Maps with Mailing Labels
- ▶ Historical Values