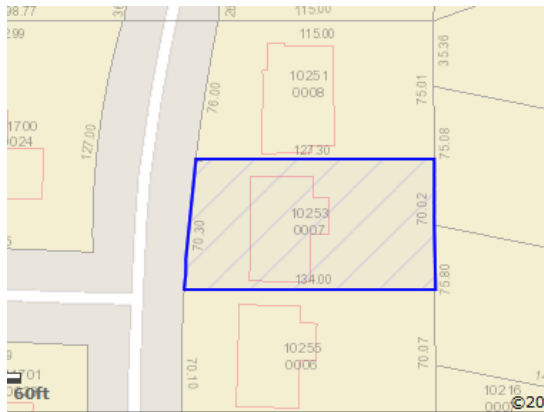


## Printing instructions for Google Chrome users to remove 'black box' polygon

AIMS recently added a diagonal fill at the request of users needing better contrast of selected properties. While this was a great help to Firefox and Internet Explorer users, this caused selected parcels to be blacked out in Chrome.

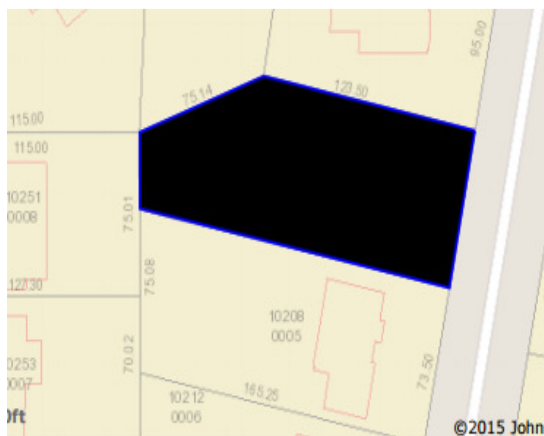
IE/Firefox:



AIMS Map

oint  
tructure

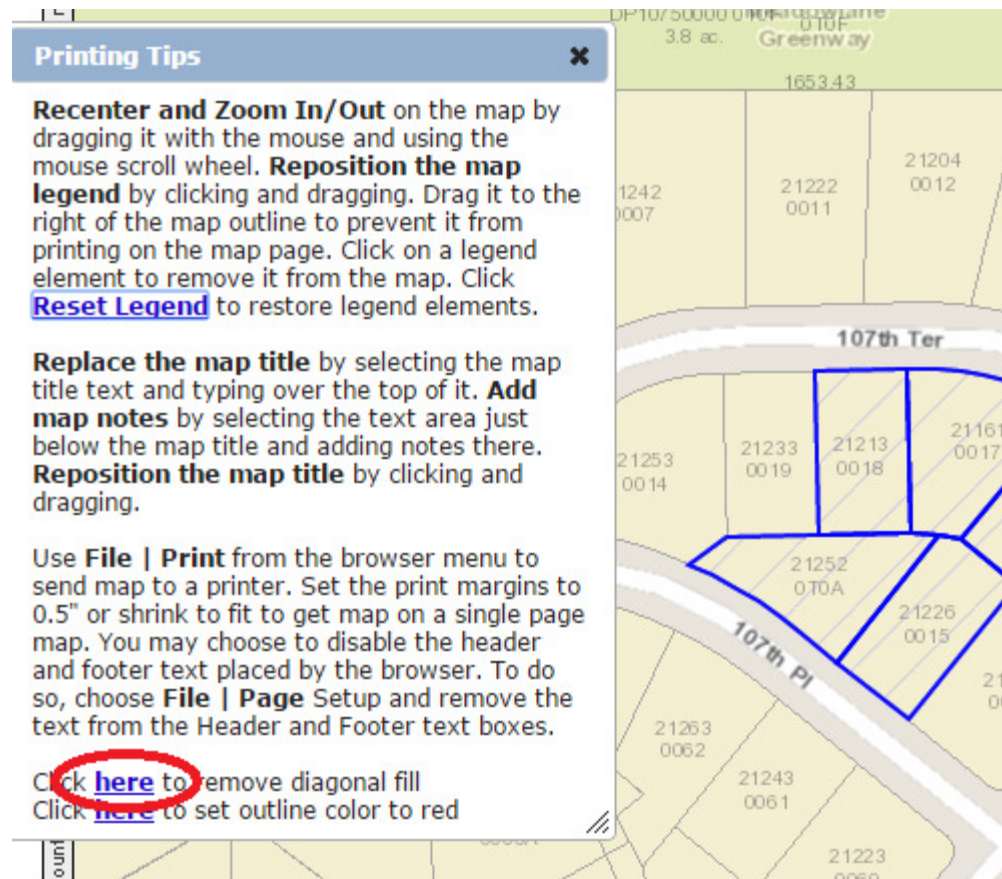
Chrome:



MS Map

:

To remove the black box, you simply need to select 'Click [here](#) to remove diagonal fill' on the bottom of the Printing Tips popup box:



There is also an option to set the parcel outline color to **red** if needed.

Please [contact us](#) if you need further assistance.