



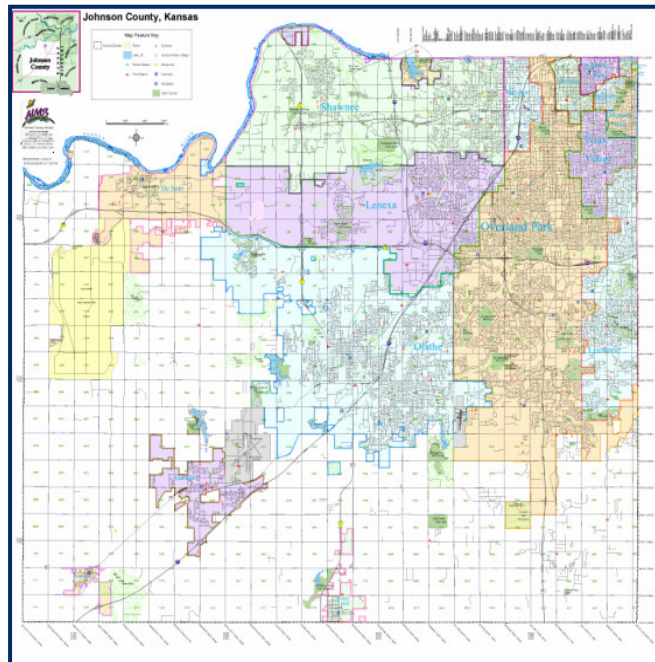
## Comprehensive GIS Solutions for Johnson County

### Pricing

Map prices vary by size, complexity, data and customization.

Contact an AIMS representative for current mapping information.

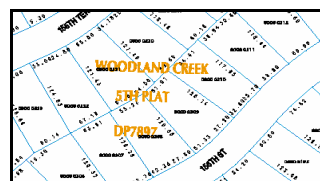
**PDF Map Book** - CD containing a PDF file with the Property, Planimetric, and/or Aerial information available. The mile sections are at a scale of 1 inch equals 200 feet and are grouped by township and range as bookmarks within the PDF. The CD contains maps of the entire county.



### Maps of Johnson County

AIMS can provide you with a map of virtually anything in Johnson County.

- ▶ **Property Maps** – Displays property lines, dimensions, subdivision boundaries and names, and street names.



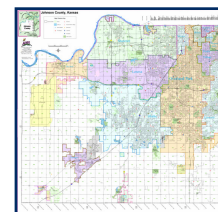
- ▶ **Aerial Maps** – Actual photographs of the Earth's surface.



- ▶ **Planimetric Maps** – Planimetrics depict natural and man-made features on the earth's surface.



- ▶ **Wall Maps** – Full color street maps that include roads, city boundaries, parks, schools, libraries, trails etc.



- ▶ **Custom Maps** – Special maps tailored to meet your specific requirements. This may include a map that shows the best place to locate a new business.

