

## Meeting Minutes

### 8/12/21 AIMS Coordinators Meeting

#### Attendees

Mark Allen	Nilo Fanska	John Jacobson	Kevin Skridulis
Aaron B.	Tim Fitzgibbons	Dustin Keltner	Travis Smith
Amy Beck	Tom Freeman	Mike Nelson	Mark Steger
Jim Bills	April Friedl	Terrol Palmer	Matt Steging
Jordan Cline	Dave Fullerton	Scott Perkins	Dan Steen
Blaike Davidson	Ryan Geiter	Shannon Porter	Jerry Swingle
Amanda E.	Doug Hemsath	Rodney Sanders	Jin Yao
Kirk Eidson	Matt Hoehn	Jeff Simons	Steve Yoder
Ben Ehrlich	Jason Hrabe	Keith Shaw	
Andrea Fair	Ken Ivey	Meg Shoffner	

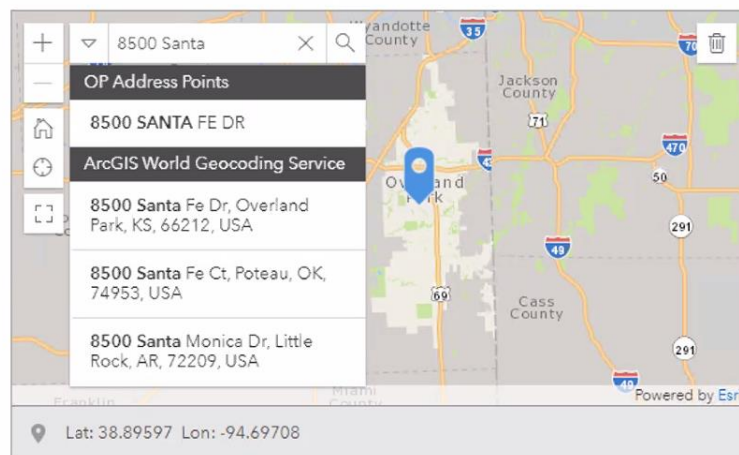
#### Notes

- Announcements
  - 2021 imagery – machine generated aerial from Pictometry. Full ortho in 2022. Best resolution we've ever seen, about 2-inch.
  - LiDAR from Dec 2020 has been delivered. We had to wait for a few corrections to replace missing data. Contours were provided.
    - Doug H asked about LAS files. They will be quite large but folks can provide hard drives if they would like them.
  - Front elevation – RFP received 3 responses, currently reviewing.
  - Mike mentioned OP is hiring GIS Analyst
- Presentations
  - **Doug Hemsath – Portal vs AGO**
    - Has been trying to decide b/t Portal vs AGO. Esri is planning a lot more for AGO. They are still at 10.8.1 so don't have configurable web apps. If you want cutting edge, you'll have to stick with AGO. They will keep with AGO for external and Portal for internal. This can be confusing for internal users that don't understand the difference b/t the two options.
    - Mike asked if Doug had looked at building stuff on AGO and migrating it to Portal later. He has set up distributed collaborations so they can see data but not sure if you can fully migrate stuff from one platform to the next.
    - April said they want to build more stuff in Portal because each update in AGO breaks their apps.
    - Amanda E. mentioned she moved most of their apps from AGO to Portal. They used ArcGIS Assistant to move things from one platform to the other. Note: it won't really handle the data so you have to do this separately.
  - **Meg – Tasks in Pro (see slides)**
    - Used to automate things in Pro. Tasks have 4 components.
    - Meg asked if anyone is using Tasks and for what?

- April said she is just getting started with Tasks but they are looking at them for migrating to Parcel fabric.
  - Mike said they are looking at them as well but none in production.
- **Kirk – migrating from ArcPad to Field Maps**
  - They were part of beta team since 2020. ArcPad had a lot of functionality and complexity. Making some headway. Still want high accuracy GPS capability.
  - Looked a little at web hooks. Amanda mentioned you can do more calculations and hide things based on rules. Web hooks are new (Survey123 already has this capability). Esri working on web hooks for all feature services. May connect to Jupyter Notebooks. Not out yet but maybe in next year. Looking forward to migrating to Field Maps.
  - OP is about to deploy Field Maps but most of their devices are too old to run it.
  - Kirk said they have a mobile device management project
  - Amy asked about iOS in the field and iPads overheating. Doug said they have had some iPads that got too hot and shut down. As long as the device is kept cool it will be fine but sometimes if left on a dash they will overheat
- **Aaron Baumgarden – Partner Collab in AGO (see slides)**
  - Determine reason and set up roles and access.
  - Jin asked what the benefit to these are and what type of data could be shared. There are many different ways collaborating on data could be useful. I assume this could be anything you want to push to AGO.
- **Jin Yao – ArcGIS Python in Jupyter Notebook (see slides)**
  - IDE for Python plus note-keeping and visualizing.
  - Three different ways to start Jupyter; from Pro, stand alone, or stand alone in virtual environment.
  - Mike asked how to get started and how to run the command? Jin said if you don't have Pro license, you can use the ArcGIS API for Python. How to schedule? Not sure, copy out and schedule another way.
- **Dave Fullerton – Collect valid address using Survey123**

What's your address?\*

Enter your address through the map.



- Was kind of confusing having 2 geocoding services and not very customizable.

- It was a required field but form was returning the default lat/lon instead of address so they were going to have to reverse geocode.
    - Address question said it was required but it would let you skip it.
    - Use 'Geocode question' which is still in beta. Available in AGO in Sept and Survey123 by EOY which will allow you to use your own address locator.
- Other Discussion
  - **April – Branch Versioning**
    - New type of versioning. At 10.6.1 Esri released Branch Versioning.
    - Some Pros; it's only a single table which makes it faster and there is less overhead. No need to compress the table. People with non-Esri apps will see edits immediately. Feature classes can use either type of versioning. Must be same if in a relationship together (i.e., feature dataset). Single database will support both types but separate connections are required for editing. Works with service-oriented architecture, not supported with direct connect to database.
    - Cons – only two levels; you can only make child version off the default.
    - They are planning to move from Geometric Network to Trace Network before going to Utility Network.
    - Kirk said they are planning to migrate to Utility Network in 2022 and looking at the Branch Versioning. No releases of desktop going forward, Pro will be only app going forward.
    - April asked about new versions of Windows. Matt H. chimed in that only patches and bug fixes.
  - **Other Comments**
    - SP talked briefly about the 30/30 initiative. Goal to set aside 30% of land/ocean by 2030. We looked at park space and JOCO is under 6%.
    - Mike talked about ArcGIS Enterprise strategies, there was a good session on this. Helps users plan for how to store data.
    - Creating effective dashboards was another good session. Lots of stuff with Arcade.
    - April also mentioned there is a lot of new tools and functionality in Pro but they only work with Enterprise geodatabase or with hosted feature layer but their data isn't set up that way.
    - Next meeting tentatively scheduled in-person at Lenexa. Hybrid meeting is an option but wouldn't provide great experience for virtual users.