

## Sept AIMS Coordinators Meeting

9/9/21

### Attendees

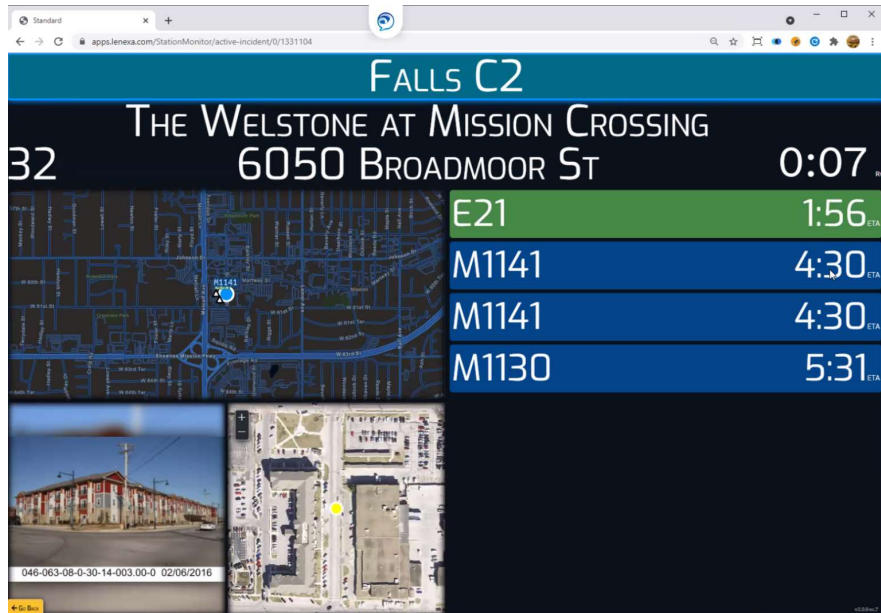
Mark Allen	Tim Fitzgibbons	Ken Ivey	Travis Smith
Aaron Baumgarden	Tom Freeman	Kate Kennedy	Dan Steen
Jill Clifton	April Friedl	Cliff Middleton	Mark Steger
Jordan Cline	Dave Fullerton	Cheryl Muller	Matt Steging
Blaike Davidson	Adrienne Galbrecht	Mike Nelson	Chris Stillwell
Bryan Dyer	Ryan Geiter	Terrol Palmer	Jerry Swingle
Amanda E.	Chris Gralapp	Shannon Porter	Don Tinsley
Ben Ehrlich	Matt Hoehn	Keith Shaw	Lauren Voelker
Kirk Eidson	Ron House	Meg Shoffner	Travis Wagner
Nilo Fanska	Jason Hrabe	Kevin Skridulis	Jin Yao

### Notes

- Announcement
  - Shannon mentioned several open positions with Johnson County (i.e., DBA, Financial Manager, Project Manager or business analyst, etc...)
  - Mark announced that JCPRD's Planning & Development Manager Cliff Middleton is retiring next week.
  - Front elevation project – meeting with selected vendor and feature extraction demo
  - Update on imagery – due to increased resolution, caching took longer than expected
- Jerry – Initiatives at Lenexa (see slides)
  - Re-energize GIS at the city. Started bimonthly user group. Provide technical workshops. Engaged account team at ESRI.
  - Prepare for Pro.
  - Data inventory/cleanup/validation (parks/trails, fiber)
  - Implement ArcGIS Enterprise
- Adrienne Galbrecht – Crime Analyst (see slides)
  - Car tracking, cellular records, Geoprofiling, Risk Terrain modeling
  - Jin asked, " what software do you use for spatial, pattern analysis? How do you do the analysis, drag and drop, or write code?"
    - LexisNexis workstation/database. Leans towards Google maps but they would prefer ArcGIS Pro. City pushes data up to their database and then then downloads it back to workstation to do analysis.
    - Initial cost was about \$5K for workstation (one-time, up front cost). There are additional costs.
  - Mike mentioned OP is also using LexisNexis and you can check out some of the data on <https://communitycrimemap.com/>
    - Other local cities are using it as well
  - RH asked if they had looked at the add-in for Pro. She researched but not actively using.
- Don Tinsley – Demoed custom built fire incident dashboard.



- Left side shows all the staffing
- Right side shows active calls
- Top data shows charts/graphs including 24 hour trend and internal calendar
- Bottom is global view (temp, winds, AQ, wet-bulb, and burn permits). Also shows top responders. If Wet-bulb is 82 or higher they receive additional units from MedAct.
- Middle is map providing current snapshot of activity. Basemap can be switched out or other layers like weather can be overlaid.
- Can click on active calls to see additional details:



- Chris Stilwell – Station Dashboard (get slides)
  - Custom built dashboard using various technologies.
  - Front end-angular and ESRI maps.
  - Run on raspberry pi.
  - Pull new data from CAD based on timestamp.
  - API is .Net 5.0. uses firehouse data for staffing and historical data.
  - ESRI javascript library (core 4.20)
  - RH asked if they've done additional analysis after the fact? Chris said that will be more phase 2 and they are diving into that now. Still very proof of concept right now.
- Ken – Stormwater fee discussion
  - What is the process?
  - What can you change?
  - What works best?
  - Matt said Olathe is based on parcel size and not impervious surface.
  - Lenexa is based on impervious surface but also tries to take the type of property into account to come up with EDU charge.
  - Current process takes about 2-3 months to get from start to finish on a new property.
  - Dave mentioned OP is also based on impervious surface but only for non-residential properties. Uses dwelling units from APR but has difficulty splitting up into residential/non-residential. Tried using spectral analysis using imagery but too much error.
  - Developers have to submit CAD drawings for non-res so city can get impervious surface.
  - Lenexa started requesting CAD drawings but not a requirement.
- Evergy data discussion
  - How to approach Evergy about getting their data. Since merger, it has been 3 years since we received updated data.
  - If we are unable to get updated data from them, our plan is to remove it by Dec.
  - Asking for cities to help make request to Evergy and how to find the right person.
  - Ryan will take lead on drafting email and pass it along to cities so they can share with leaders that may have more influence.