

November AIMS Coordinators Meeting – City of Shawnee (Doug Hemsath)

Announcements of Note:

- EOC meeting met led by Steve Brown. They are going to meet again in December. All interested are welcome.
- AIMS upgrading to 10.4.1. All desktops and Web Server complete. Print Server in the near future. DSV01 SDE in the near future. This should be transparent to users at Arc 10.x.
- All should be hitting historic imagery from services now as it has been deleted from SDE.

Shawnee ESRI Open data page:

Shawnee created site through ArcGIS online

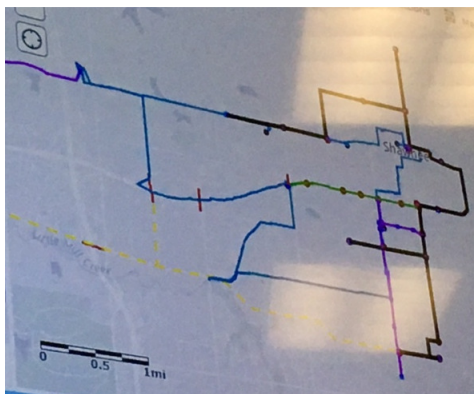
- Can manipulate template
- Intention is to replace “maps” page with this
- Accepts Word Doc but no Excel (but coming!)
- Want it to be a document repository
- Allows for quick attribute analysis without data extraction/download
- Exports geo JSON amongst the other usual export types
- You can export just the selected/queried results
- No options to symbolize

SURVEY123

- Simple to use and setup
 - Must be a named user to publish
- Can attach photos
- Works offline
- Can analyze collected data
- Design it offline – can be done through Excel form
- Good for quick surveys (i.e. – disaster response, illegal signs)
- Can't edit feature classes directly
- Can you export? Don't know
- Best for new stuff (not to edit already existing data)

FIBER MANAGEMENT

Shawnee Fiber



- Unite fiber bought some of theirs

- Surewest is/was the original fiber in the city
- Shawnee originally only had ring around city from city building to building – it was their fiber but not their conduit so they didn't have to worry about maintenance. Now they care a bit more because they don't have that built in maintenance.
- Justice Center to public works was the first Shawnee laid fiber. It goes over I-435
- Google was willing to install extra conduits for free
- They own conduits inside bundled group down Quivira
- Operation Green Light connects lights with fiber down Shawnee Mission Parkway
- Shawnee is doing assessment in house – completely in ArcGIS online
 - 100% secure so choosing AGO with named users
 - Accuracy: perfectly accurate with faults but lines will be right side of the street
- Overland Park is using “insights” to design their fiber

EOC

What can we do to help emergency management? What are we doing to help?

- Come up with standard base map with standard symbols
- Working on attributes
- Building something everyone can use
- Education/Promotion: Get someone at all agencies familiar with our services and basemaps/attributes

Notify JoCo

- Emergency notifications
- EverBridge is name for countywide notification
- Doug is administrator for Shawnee
- Can't send just to certain people but ability to get into county notifications
- Could create a group to GIS notify and attached to EOC group

CityWorks

- Asset management
- Main goal – get CSR's (citizen service requests) off Lotus Notes (which is now turned off)
- EnerGov is what OP uses for asset management
- Originally Shawnee went with EnerGov but at the time they couldn't integrate so they switched
- SeeClickFix is the public facing portion
 - Don't get names
 - Can control comments
 - If not inside city limits it will sit out in space and may not be addressed
 - Could be some overlap between cities

Reporting Services

- Using Crystal Reports before it was included
- SQL Reporting Services was all Shawnee was doing for awhile
- Now Cityworks has viewer for crystal reports
- Shawnee hasn't decided yet what the future will fully look like for them with reporting services
- What are others using?
 - OP - Crystal