

Countywide GIS Stormwater Network

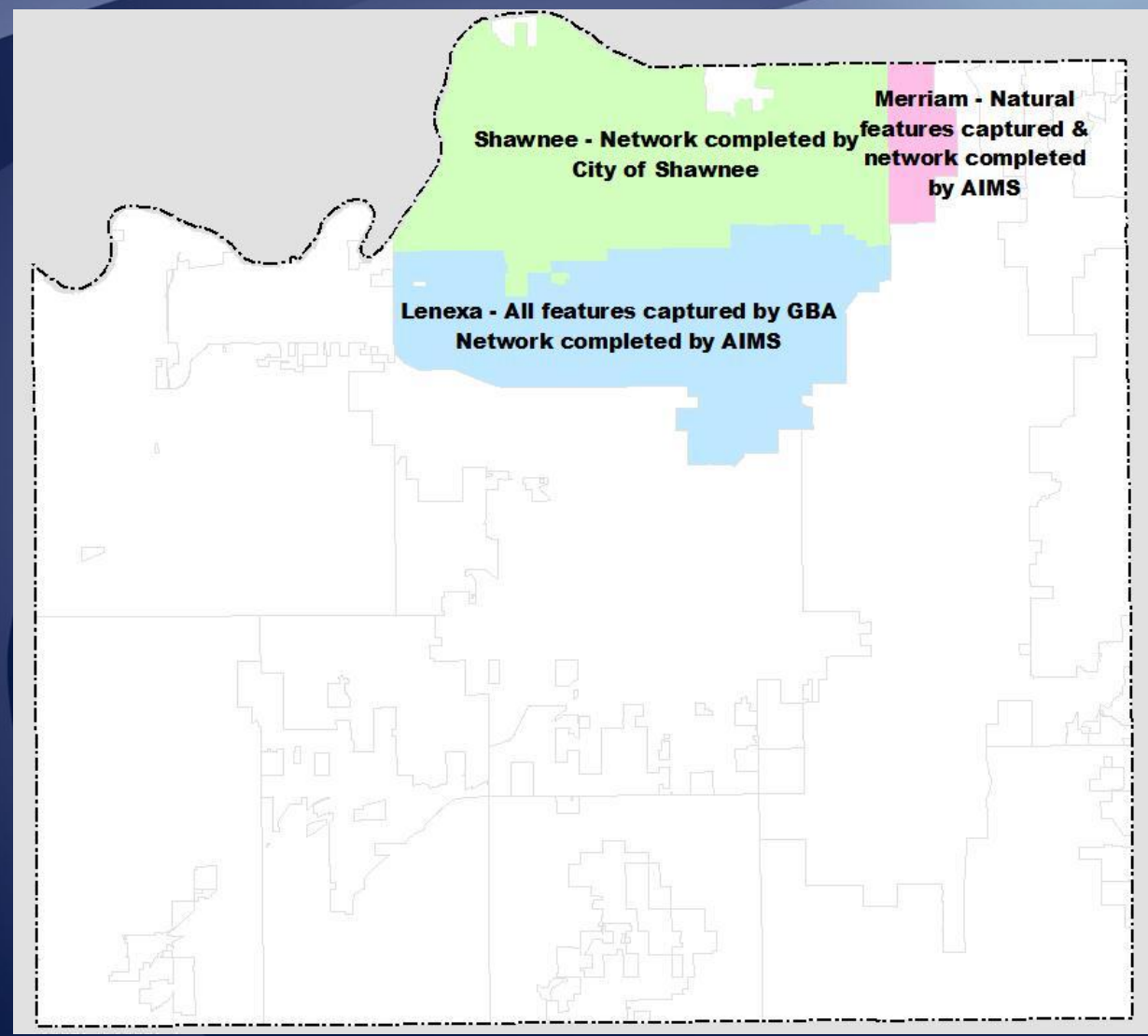
AIMS Coordinators Meeting
June 14, 2012

aims.jocogov.org

Stormwater Network

- Project goals:
 - Create a countywide network that could assist with monitoring, enforcement and emergency response.
 - Network should connect both infrastructure and natural features.
 - Create web tools to do common functions.
- What AIMS completed:
 - Initial pilot completed in fall 2009
 - Countywide initiative kicked off in spring 2010
 - Data and version 1 application completed by 2011.
 - SW network tool/data integrated with public IMS rewritten on google base in 2012.

Stormwater Network – Pilot Area

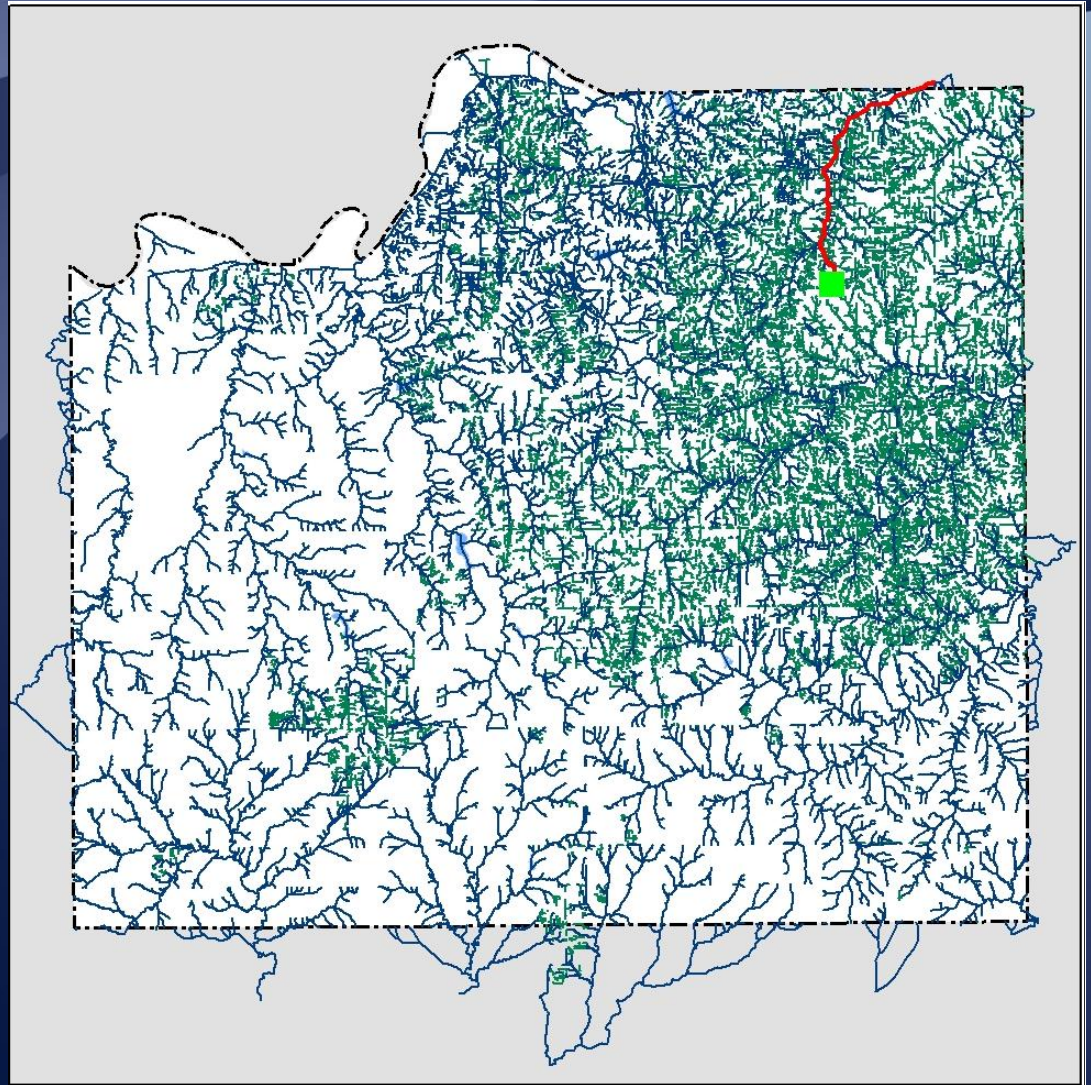


Stormwater Network - Data

- Data tasks AIMS completed (250+ hrs)
 - Contacted cities to update existing data.
 - Captured natural features for entire county and tied to infrastructure.
 - Scanned and registered necessary plans
 - Captured both structures and natural features for 5 entities: De Soto, Edgerton, Bonner Springs, Lake Quivira, County

Stormwater Network – Countywide

- 27,037 Natural features
 - 1,846 miles
- 89,017 structure lines
 - 1,788 miles
- 98,385 structure points
- Total miles: 3,634



Stormwater Network - Application

- Application tasks AIMS completed (200+hours)
 - Creation of ArcGIS map services
 - Integration of services into web map application
 - Symbolization of flow direction
 - Development of upstream and downstream trace tool
 - Visible alongside other utilities
- Demonstration -

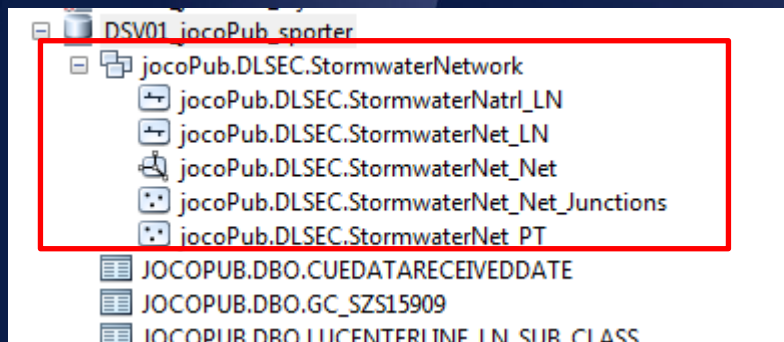
Stormwater Network - Desire for public education

- Several cities have expressed interest in having the stormwater infrastructure available publicly.
- Email to SMAC forthcoming (with test URL)
- Email asks for feedback on tool and states intention of releasing stormwater infrastructure data publicly

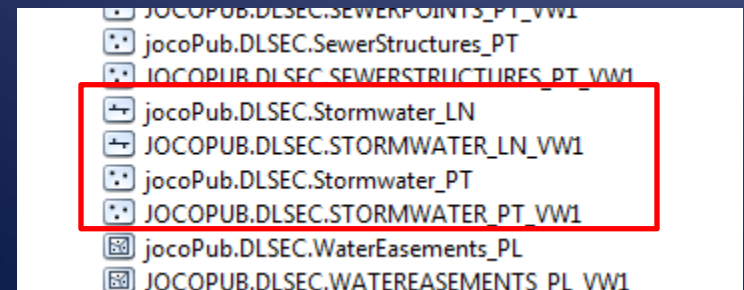
Stormwater Network - Difference from CUE

- Line directionality
- Data Scheme (fields)
- Not Sync'ed – CUE runs monthly, network has had minimal updates

Network Data



CUE Data



Stormwater Network - Maintenance

- Need to work toward single dataset
- Determine who is primary maintainer
- Determine procedures for getting updates to AIMS
- Add unique identifier fields to facilitate sharing and change detection.
- Expect contact from us to discuss

Stormwater Network - Other suggestions

- In some cases private structures are not captured.
- In some cities data needs updating.
- Capture retention basins.
- Link scanned plans to infrastructure.
- Provide ability to update attributes thru web.

Stormwater Network - Feedback

- OK to release stormwater data to public?
- Best method of keeping data up to date?
- Can cities require a digital submittal with new stormwater and road projects?
- How will the network help you in your daily activities?
- How can it help you prioritize your projects?