

Unified Government

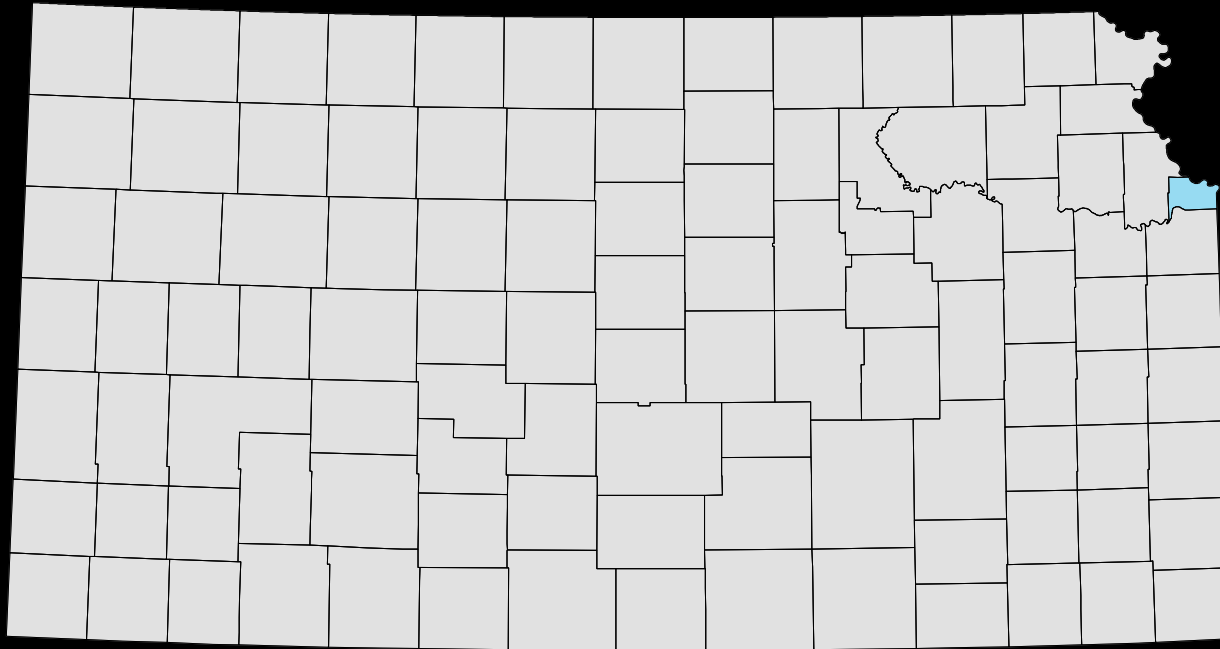
GeoSpatial Services

GIS Technical Lead

# Consolidation

*The creation of the  
Unified Government of  
Wyandotte County / Kansas City, Kansas*

# Wyandotte County



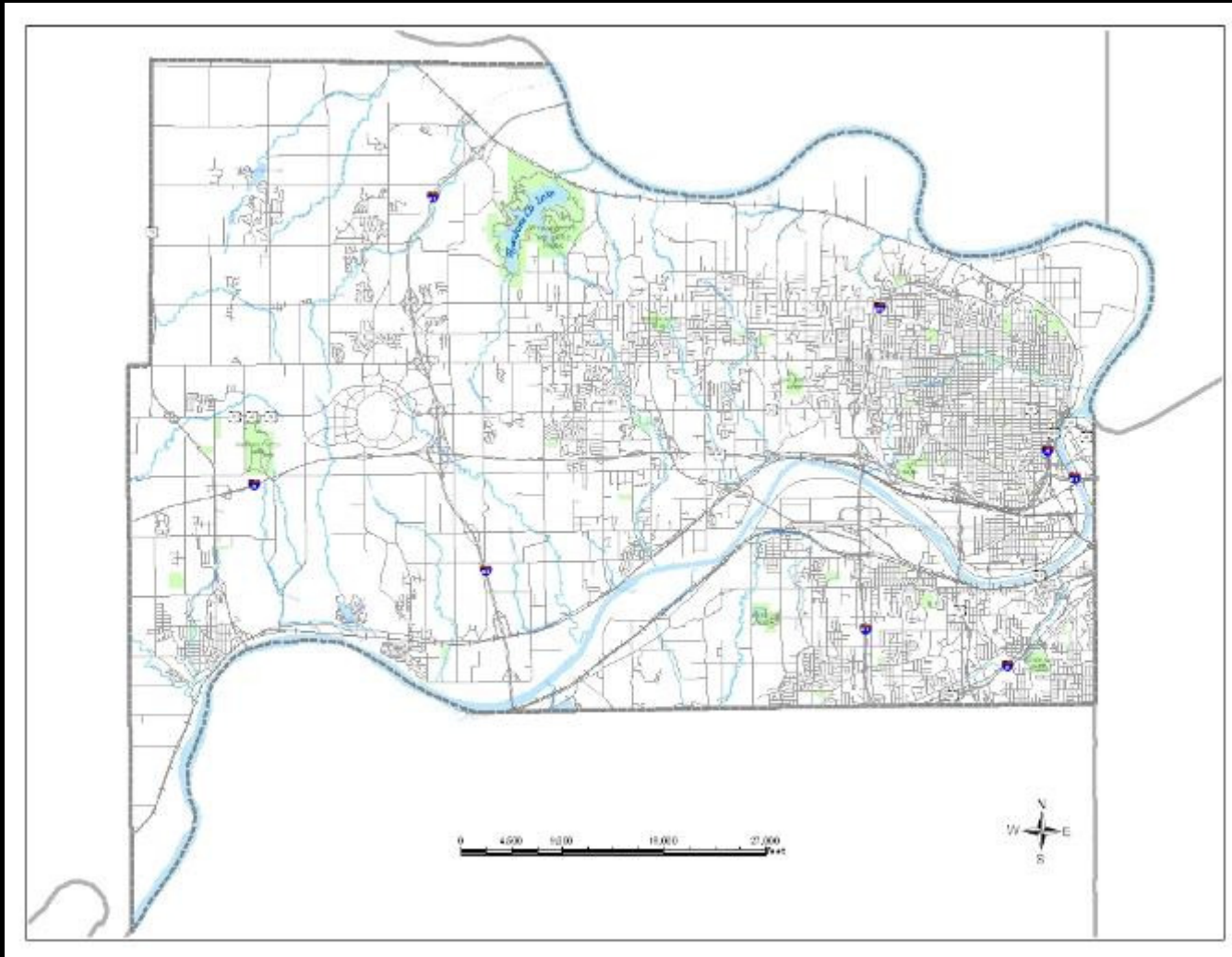
# Wyandotte County

## Quick Stats

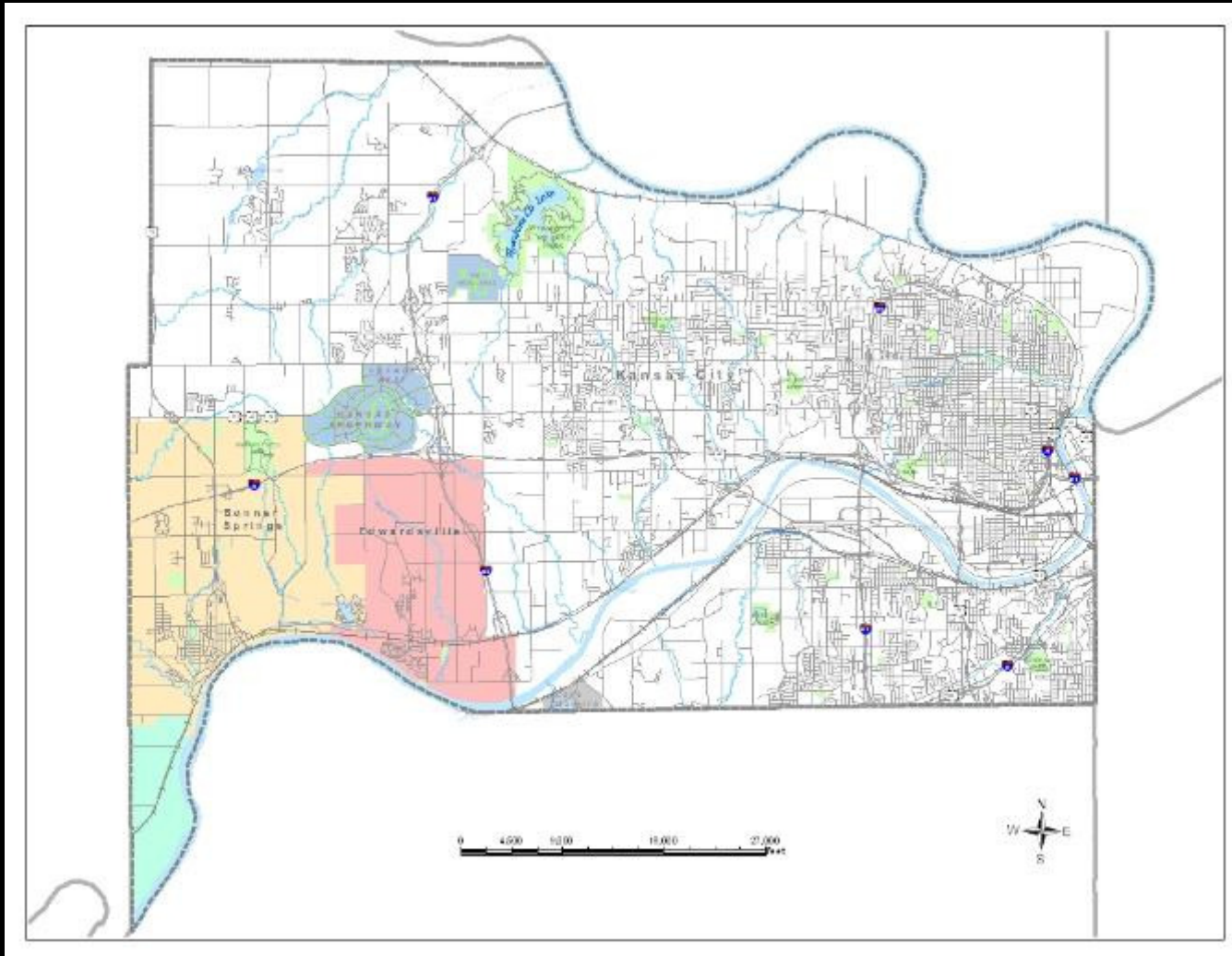
- Geographically the smallest county in Kansas (~156 square miles)
- Fourth most populace county in Kansas\*
  - Johnson County 516,731
  - Sedgwick County 470,895
  - Shawnee County 172,693
  - **Wyandotte County 155,509**

\* Population figures according to July 1, 2006 US Census estimates

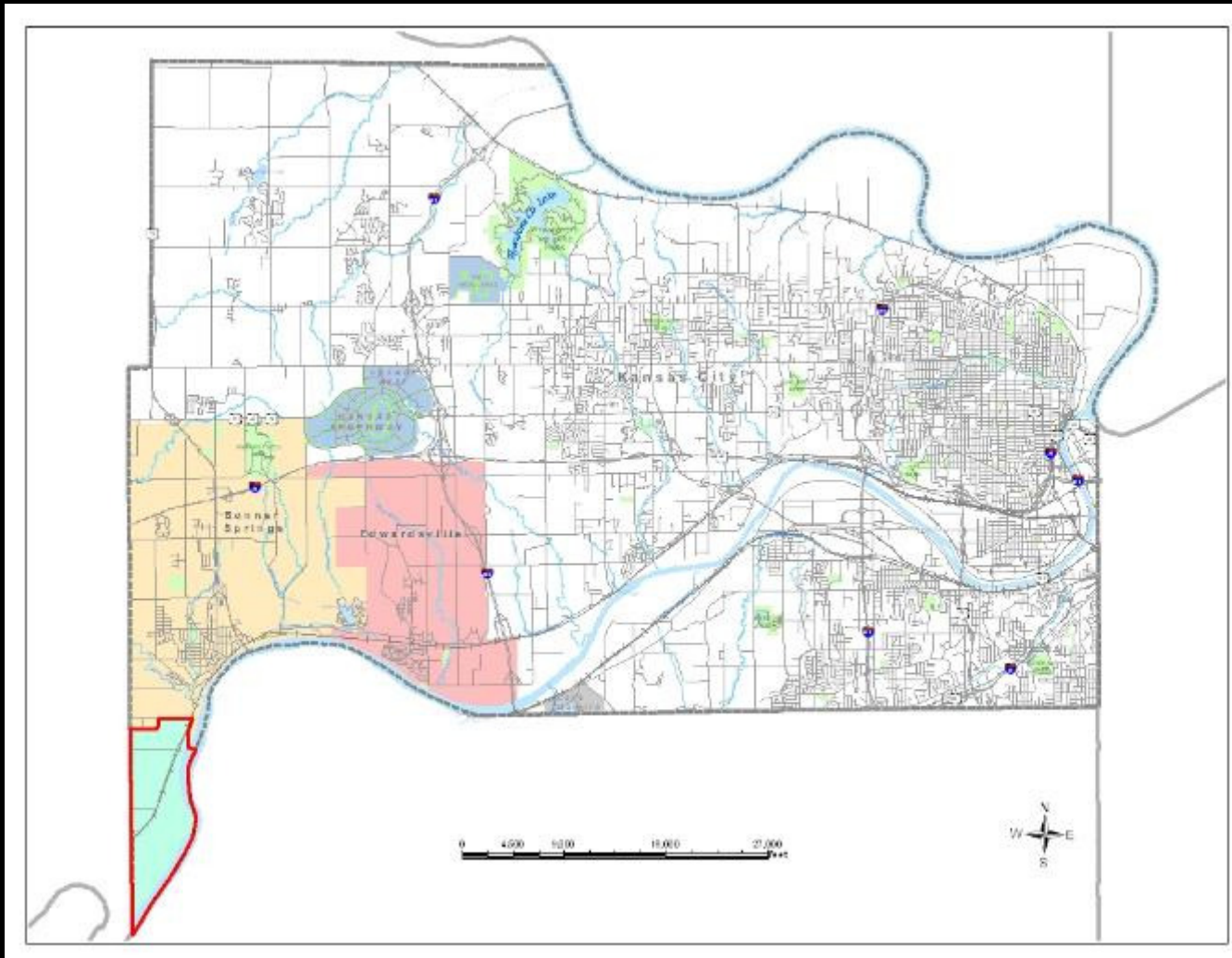
# Wyandotte County



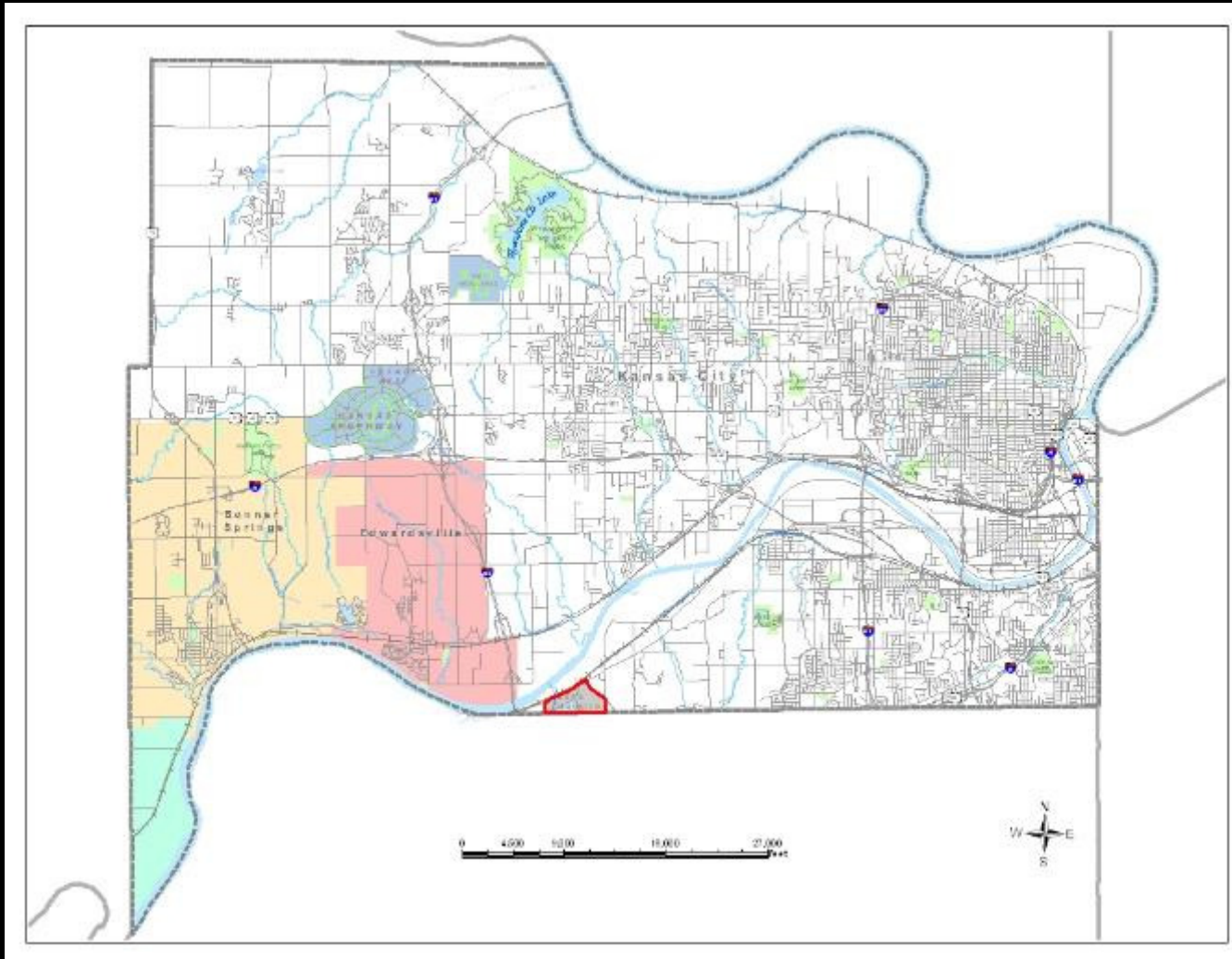
# Wyandotte County



# Unincorporated Wyandotte County Delaware Township

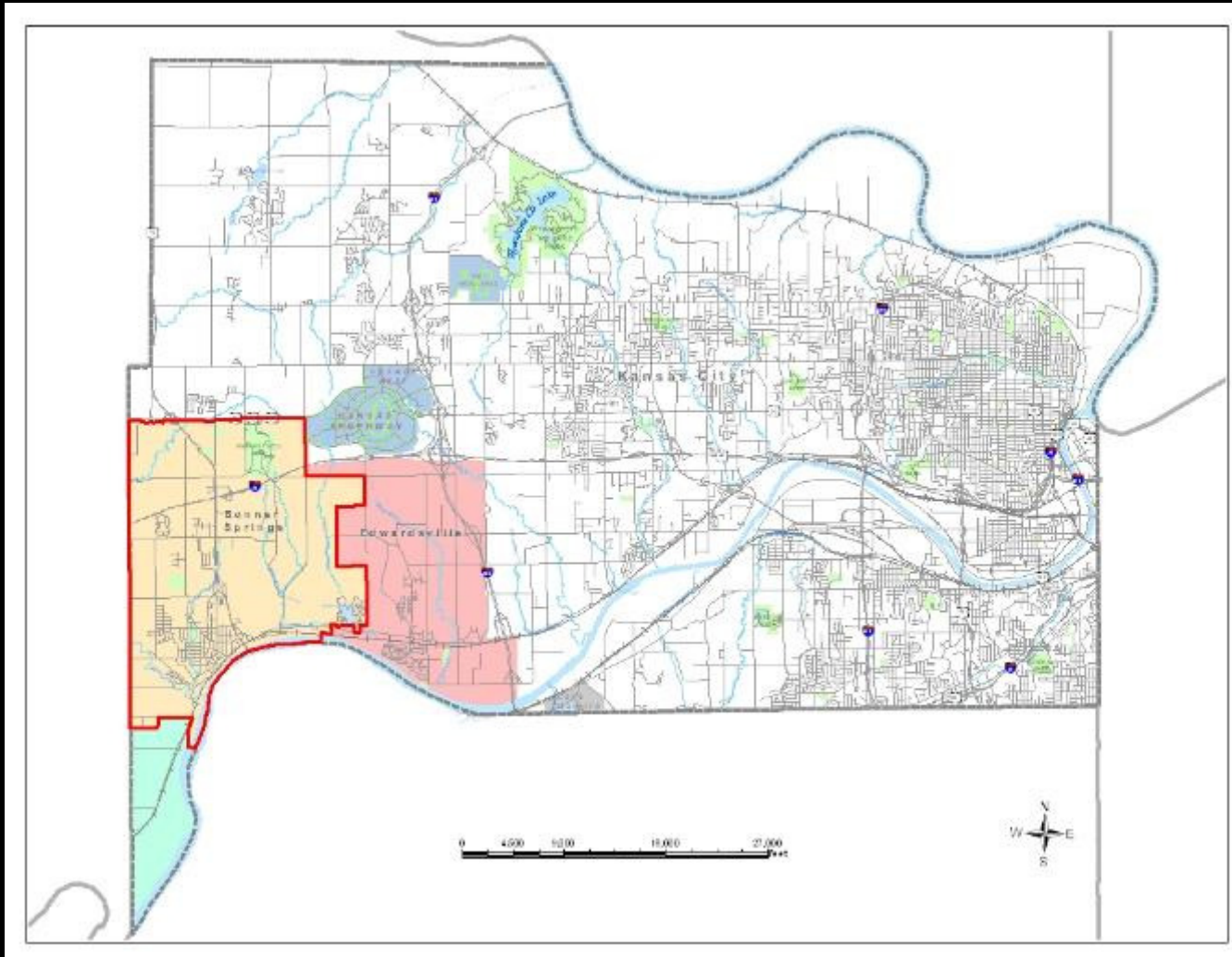


# Lake Quivira, Kansas

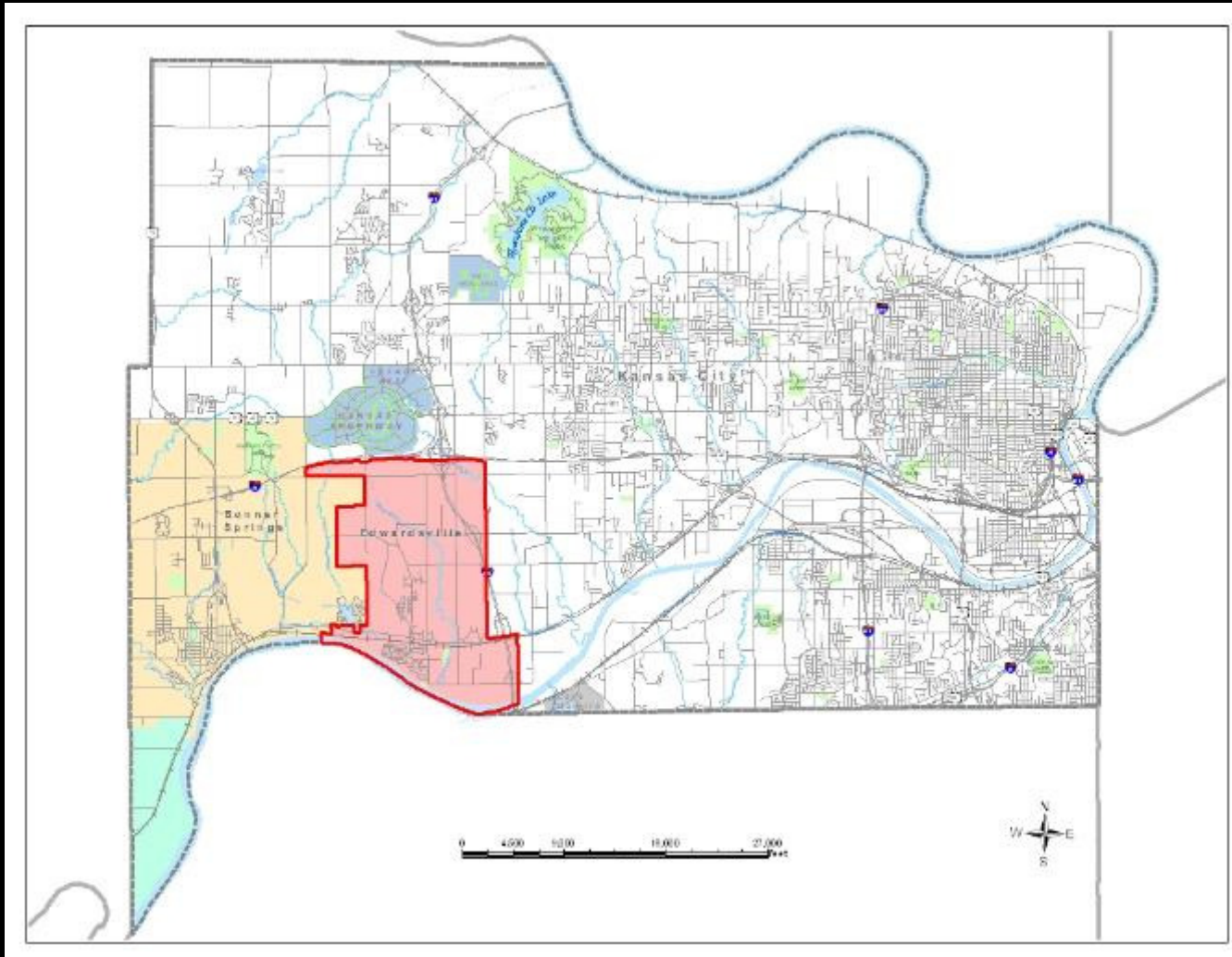




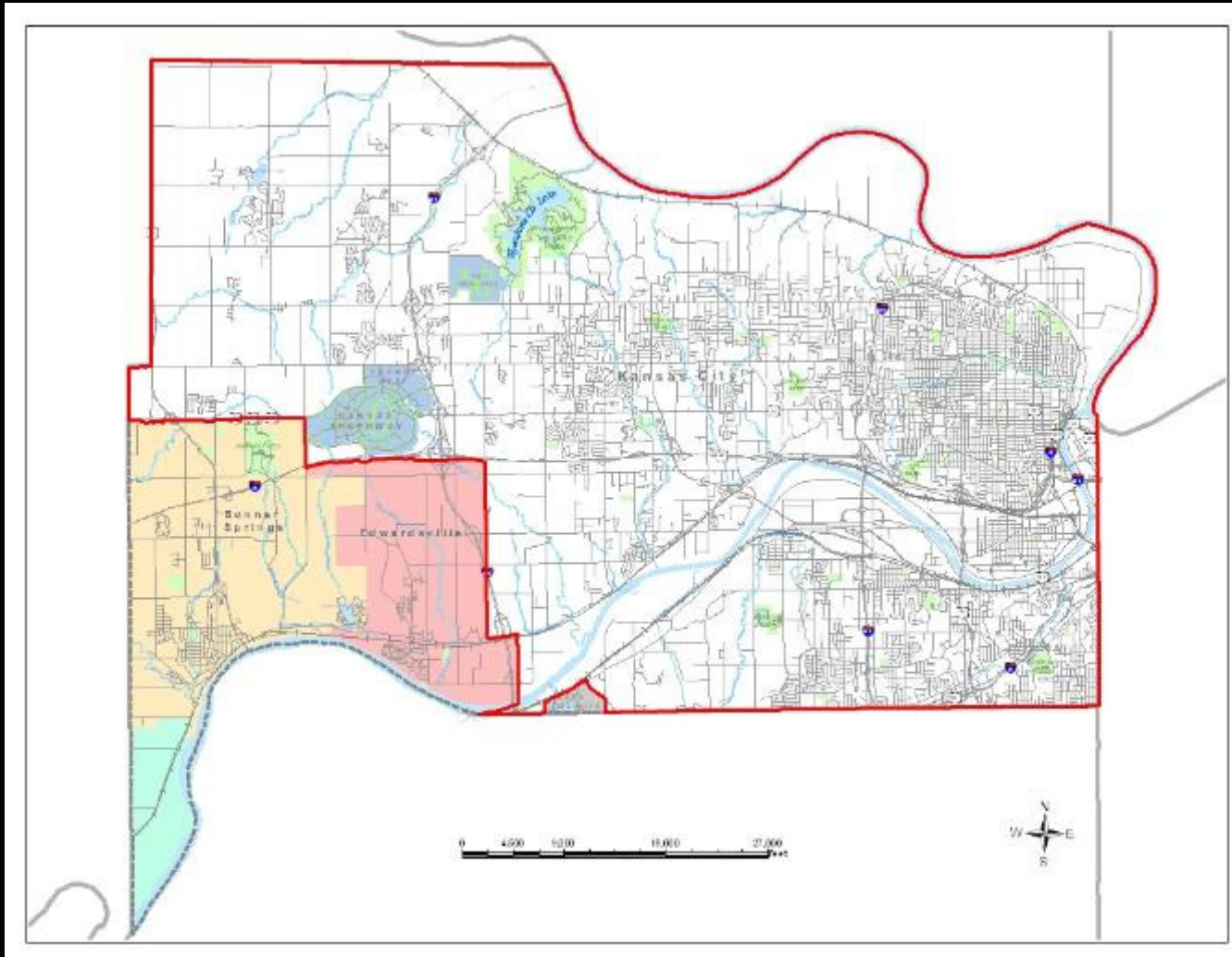
# Bonner Springs, Kansas



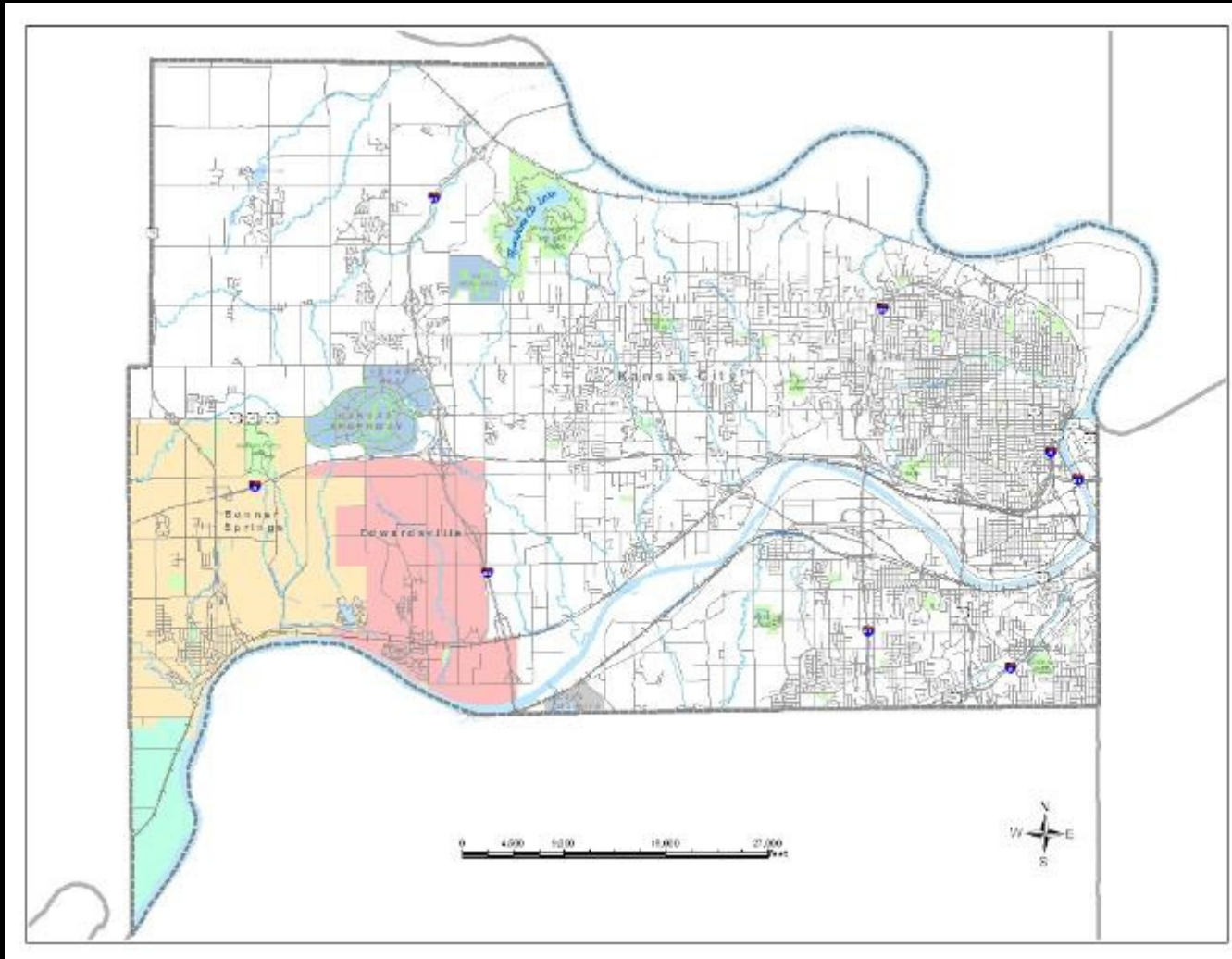
# Edwardsville, Kansas



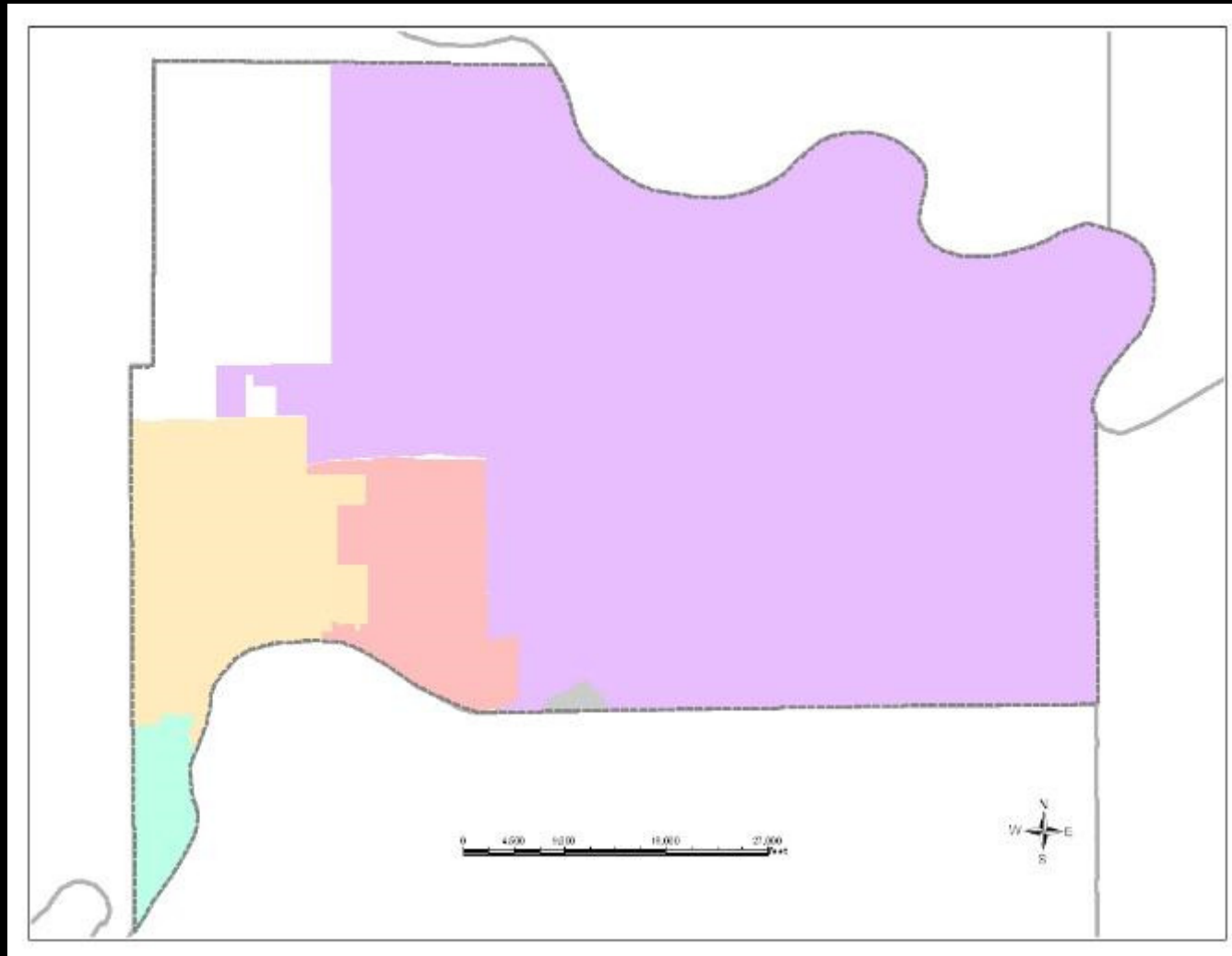
# Kansas City, Kansas



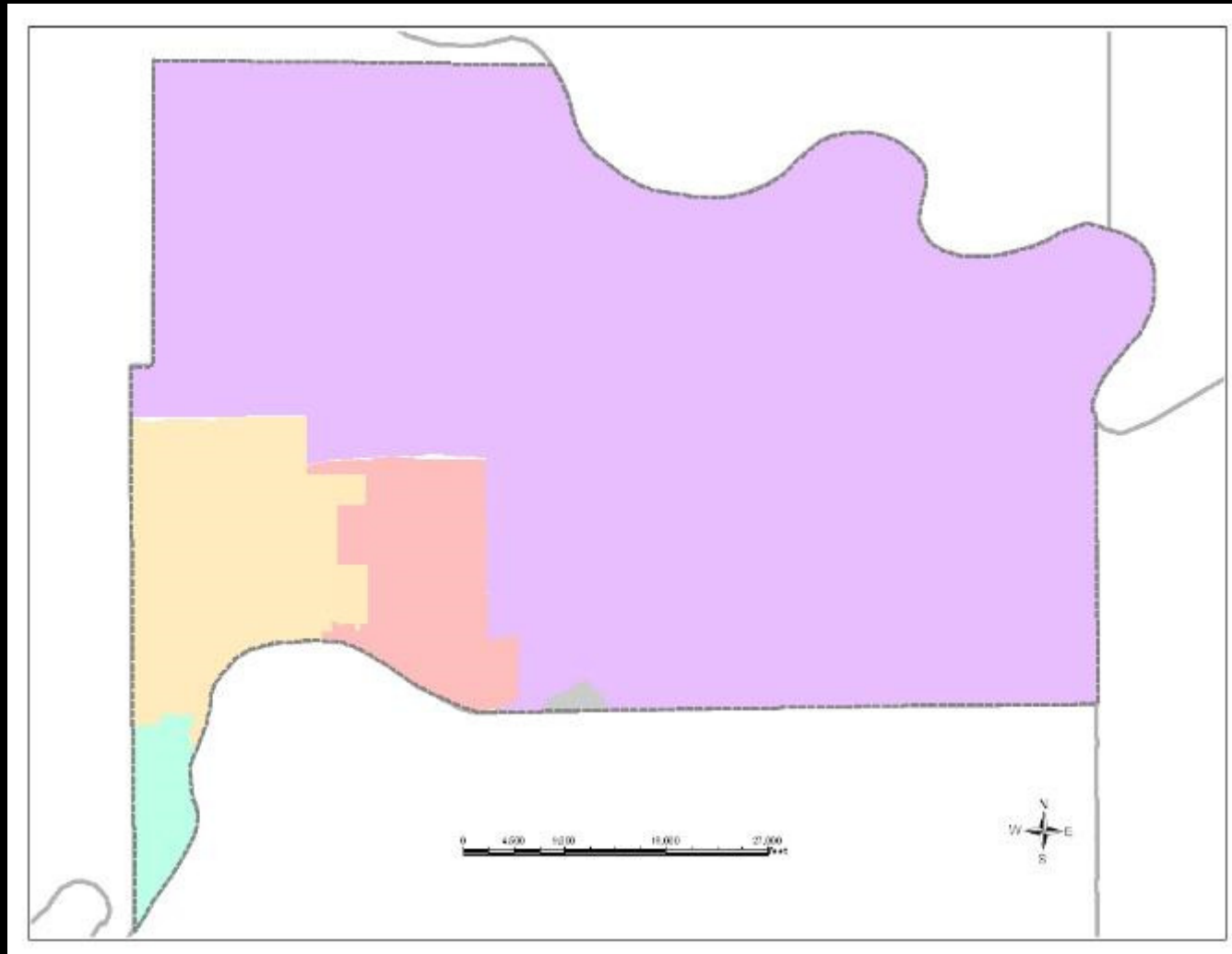
# Wyandotte County



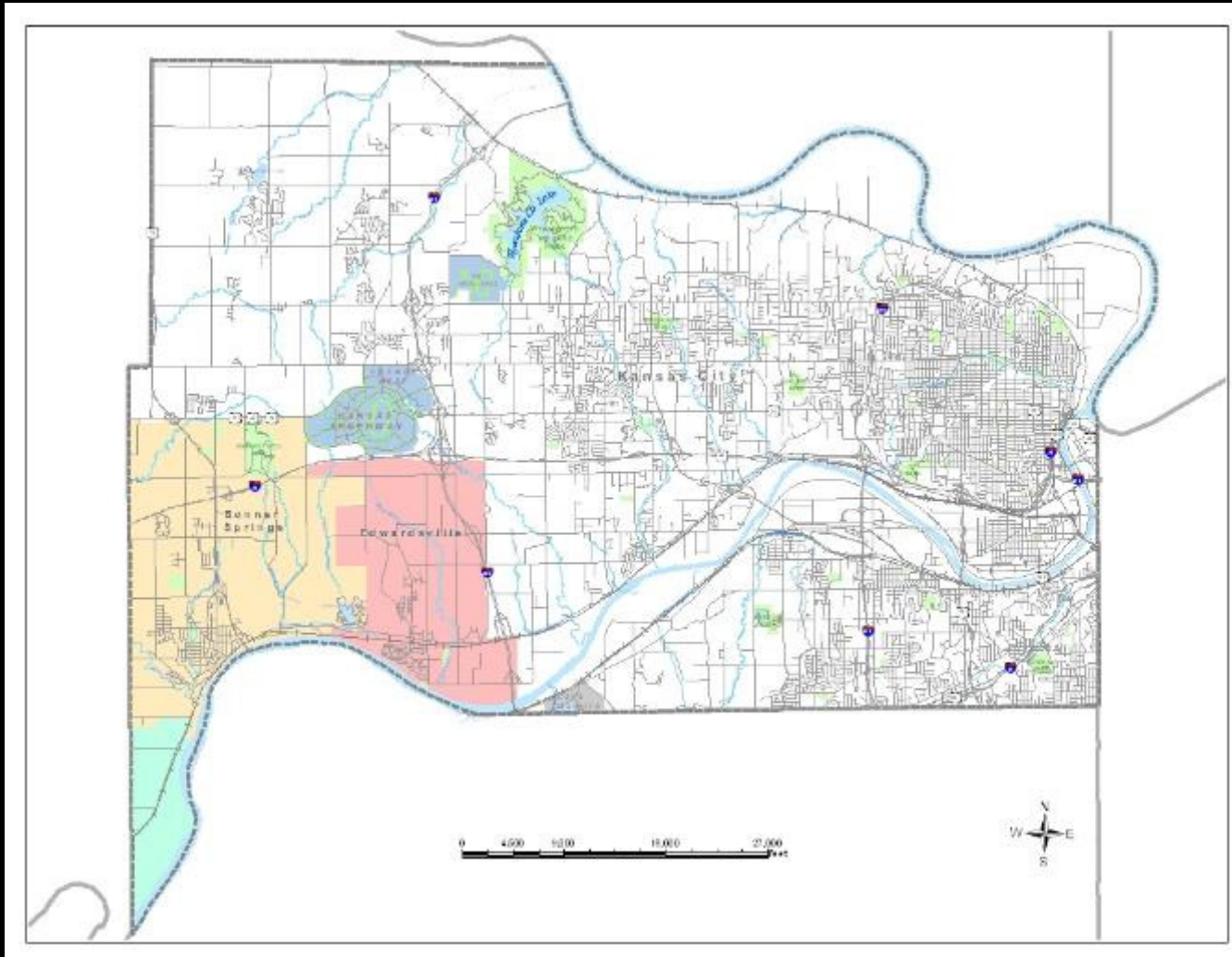
1974-1992



1992



# Unified Government



# Prior to Consolidation

	<b>Bonner Springs</b>	<b>Edwardsville</b>	<b>Lake Quivira</b>	<b>Kansas City</b>	<b>Wyandotte County</b>
	City Manager	City Administrator	City Manager	City Manager	
<b>Elected</b>	Mayor	Mayor	Mayor	Mayor	Commission Sheriff Register of Deeds Surveyor Clerk Treasurer
	Council	Council	Council	Council	
<b>Services</b>	Fire Department	Fire Department	Fire Department	Fire Department	
	Police Department	Police Department	Police Department	Police Department	
	Public Works	Public Works	Public Works	Public Works	
	Parks	Parks	Parks	Parks	Parks
					Appraiser
				Information and Resources	Data Processing
					Base Mapping Program
	Purchasing	Purchasing	Purchasing	Purchasing	Purchasing
	Human Resources	Human Resources	Human Resources	Human Resources	Human Resources



# Effects of Consolidation

	Bonner Springs	Edwardsville	Lake Quivira	Kansas City	Wyandotte County
<b>Elected</b>	City Manager	City Administrator	City Manager	City Manager	
	Mayor Council	Mayor Council	Mayor Council	Mayor Council	Commission Sheriff Register of Deeds Surveyor Clerk Treasurer
<b>Services</b>	Fire Department	Fire Department	Fire Department	Fire Department	
	Police Department	Police Department	Police Department	Police Department	
	Public Works	Public Works	Public Works	Public Works	
	Parks	Parks	Parks	Parks	Parks Appraiser
				Information and Resources	Data Processing Base Mapping Program
	Purchasing	Purchasing	Purchasing	Purchasing	Purchasing
	Human Resources	Human Resources	Human Resources	Human Resources	Human Resources

# Post Consolidation

	<b>Bonner Springs</b>	<b>Edwardsville</b>	<b>Lake Quivira</b>	<b>Kansas City</b>	<b>Wyandotte County</b>
<b>Elected</b>	City Manager	City Administrator	City Manager	<b>UG Administrator</b>	
	Mayor	Mayor	Mayor	<b>UG Mayor CEO</b>	
	Council	Council	Council	<b>UG Commission</b>	
				Sheriff	
				Register of Deeds	
<b>Services</b>	Fire Department	Fire Department	Fire Department	Fire Department	
	Police Department	Police Department	Police Department	Police Department	
	Public Works	Public Works	Public Works	Public Works	
	Parks	Parks	Parks	<b>UG Parks</b>	
				Appraiser	
			<b>UG - DOTS (GSS)</b>		
	Purchasing	Purchasing	Purchasing	<b>UG - Purchasing</b>	
	Human Resources	Human Resources	Human Resources	<b>UG - Human Resources</b>	

GSS

GeoSpatial Services

# History

- 1970's
  - Wyandotte County Base Mapping Program established
    - Close relationship with the County Surveyor
  - LANDS system developed
    - Mainframe application (DL1 Database)
    - Land Records
    - Tax Billing
    - Tax Role Assessment and Administration

# History

- 1970's continued
  - Points Database
    - Mainframe application
    - Stored Parcel Boundary Coordinate Data
  - Mylar base maps compiled

# History

- 1980's
  - Purchase ESRI's ArcInfo
    - ESRI Customer #113
  - Converted the existing Points database to Coverage
  - Prime Workstations

# History

- 1980's continued
  - Topographic Mapping Colaboration
    - Planimetrics and countors
    - Quartersection 1"= 100' (1:1200)
    - BPU, KCK Public Works, Base Mapping
  - Densification of Geodetic Control
    - Originally 2 NGS Blue Book Control Points
    - When finished more than 70

# History

- Early 1990's
  - Political issues forced separation of Base Mapping Program from the County Surveyor
  - Staff downsized
  - Migrated from Prime Workstation to IBM AIX RISC Workstations
  - Topographic Mapping went Digital



# History

- Late 1990's
  - Consolidation eliminated elected County Surveyor.
    - Function moved to Public Works Department.
  - First Digital Orthos
    - BW leaf off 2.5' resolution
  - GIS Usage began spreading to other departments
    - Appraiser, Research and Analysis, Police Department

# History

- Early 2000's
  - Base Mapping / GIS (renamed)
  - GIS Needs Assessment funded by Public Works (Plangraphics)
  - Enterprise GIS (EGIS) plan and implementation (GeoAnalytics)
  - Establish GIS Data Repository, AEGIS and DOTMAPS application
  - UG established a CIO
  - Early investment in Pictometry

# History

- Late 2000's
  - Biannual Ortho updates through MARC consortium
  - First county wide LIDAR purchase
  - LANDS application replaced with CIC-TAS
  - Aegis replacement with UGMAPS
  - Parcel maintenance
    - COV to GDB
    - ArcInfo Workstation to ArcGIS Desktop
    - Sidwell Parcel Builder
  - All data maintenance moved to GDB and ArcGIS Desktop
  - All map production moved to ArcGIS Desktop

# History

- Late 2000's
  - Retire IBM AIX equipment
  - Staff reduction due to recession (9 to 7)
  - Budget reduction due to recession
  - Increased usage in other departments
    - Planning, Public Works
  - Formalized data request procedures

# History

- 2010's
  - GeoPortal established
  - Move from basement to 2nd floor of courthouse
  - Data modernization
  - 2nd county wide LIDAR acquisition
  - Acquired county wide seamless contours and impervious surface
  - Struggle through recession and lean budget years
  - Discontinued maintenance of mylar parcel quarter section maps
  - Formalized centerline maintenance

# History

- 2010's - Continued
  - Google Fiber
  - Code for America Fellow City
  - UG change in senior leadership
    - County Administrator
    - Assistant County Administrator
    - Establish General Service Administration
    - Establish Chief Knowledge Officer (CKO)
    - Director of Public Works
    - County Engineer
    - Chief Financial Officer
    - Police Chief
    - County Appraiser
    - Director of Emergency Management

# History

- 2010's - Continued
  - UGMAPS and DOTMAPS 2.0
  - Retired ArcIMS
  - ArcGIS Server
  - ArcGIS Online
  - Stabilization Occupation and Revitalization (SOAR)
  - Bloomberg Philanthropies - What Works City
  - Adoption of AGOL opendata ([yourdata.wycokck.org](http://yourdata.wycokck.org))
  - Shared office space with Delinquent Real Estate

# History

- 2010's – Continued
  - Water Pollution Control (WPC) adoption of Lucity
  - WPC move from AutoDesk to Esri
  - Board of Public Utilities Water Division move from AutoDesk to Esri
  - Water Pollution Control Consent Decree
  - GSS - 3 staff retirements
  - Public Works new focus on asset management
    - Esri and Lucity
  - New shared(embedded) GIS Analyst with Public Works
  - Moving toward an ESRI Enterprise Agreement(EA)



# GeoSpatial Services

GIS Director  
Christian Cooley

GIS Analyst

Elizabeth  
Burniston

GIS Analyst

Robert Anderson

GIS Analyst

Jason Felton

GIS Technical Lead

Brian Knehans

GIS Analyst

Robert Ringel

GIS Developer /  
Analyst

April Bowman

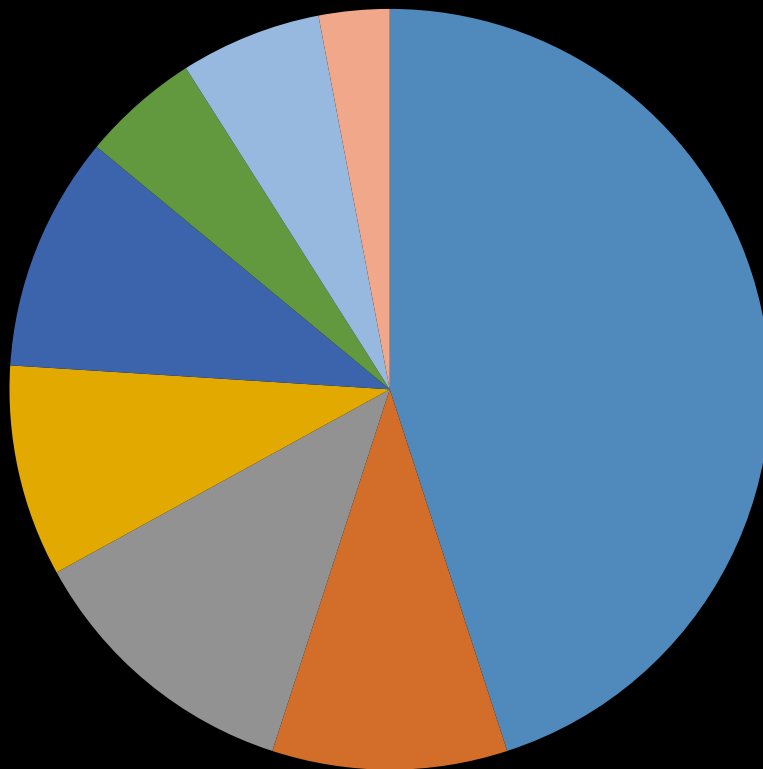
GIS Position

Vacant /  
Funded

GIS/Mapping  
Specialist

Vacant /  
Unfunded

# GIS Operations



- Land Records and Parcel Mapping 45%-50%
- Street Centerline 5% - 10%
- Address Management 10% -15%
- Aerial Photography 5% - 10%
- Web Mapping 5% - 10%
- GIS Support 5%
- GIS Infrastructure 5%