

# Parcel Foundation Initiative



[aims.jocogov.org](http://aims.jocogov.org)

# Brief History

**1985-1986**

Statewide mass reappraisal began. AIMS organized, United Aeromapping (UAM) contracted

**1989**

UAM project completed and AIMS began maintenance of tax parcels

**1995**

AIMS transferred maintenance of tax parcels to Clerk's Office

**1997**

Clerk's Office took over all maintenance responsibilities of tax parcels

**2000**

Project to collect section corners using GPS began (Global Position System)

**2005**

Migrated "Property Spatial Database" to current storage format

**2014**

\*1,248 section corners GPS'ed out of 2,035 section corners. 787 section corners not GPS'ed

# Definitions

- **The Public Land Survey System (PLSS)**
  - Established by the Federal Government in 1785 as a means to divide and then convey lands from the Public Domain to private land owners. A roughly gridded network of surveyed lines and monuments; approximate 6-mile by 6-mile "townships" composed of approximate 1-mile by 1-mile "sections".
- **Tax Parcel**
  - A tax parcel is a division of land developed for the sole purpose of creating a complete, accurate and equitable unit of taxation in support of taxpayers contributing a fair share of support for the community services received.

(Introduction to the Public Land Survey System | PLSS)

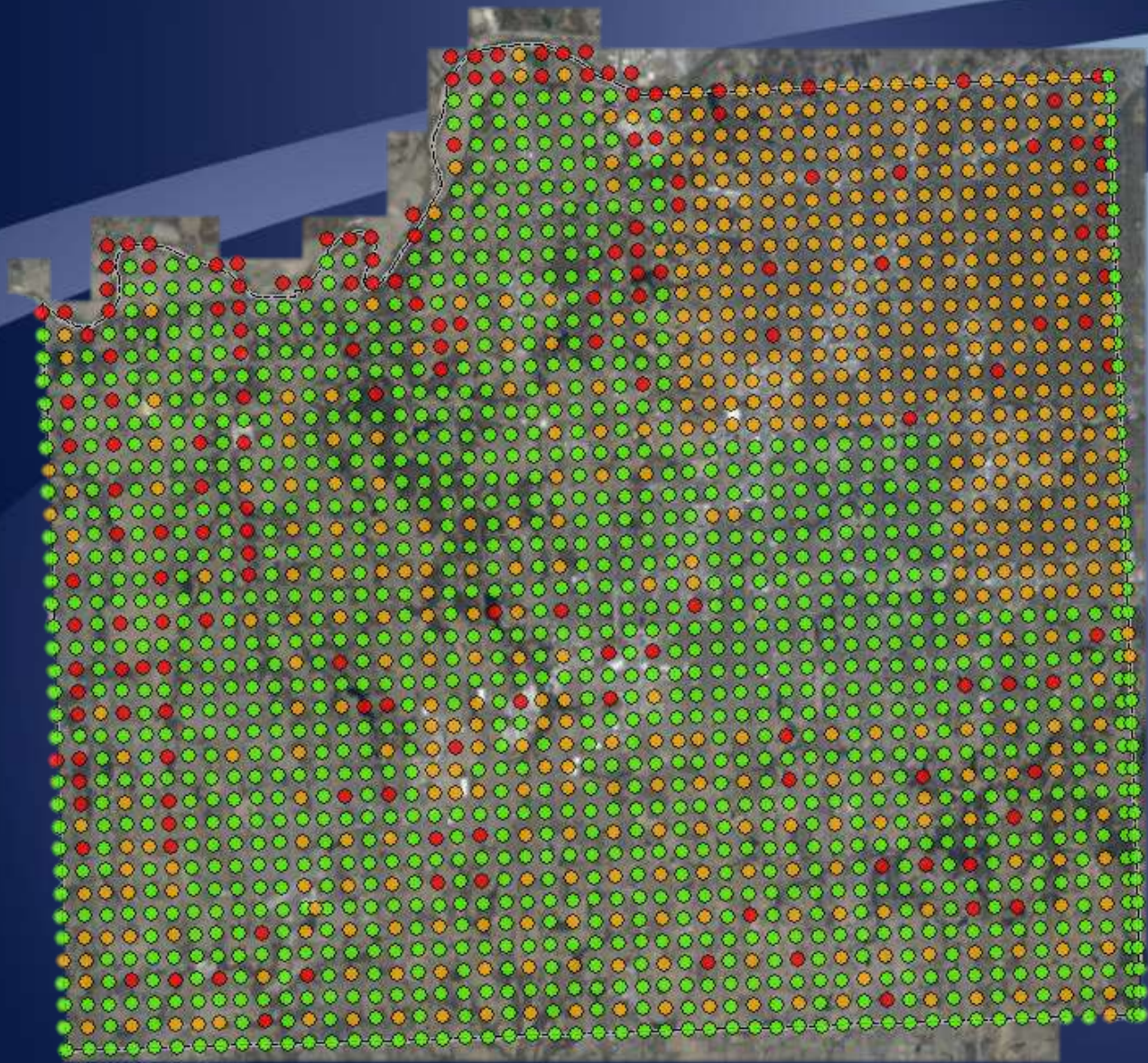
(Tax Parcel Procedures)

# PFI Goals

1. Improve **spatial accuracy** of the tax parcel data
2. Develop and enhance our **methods, procedures and skillsets** in tax parcel mapping
3. Establish the highest level of **confidence** in our tax parcel data

# Comprehensive Approach

1. Establish spatial control at the section level in the PLSS
2. Create parcel lines using the deed legal description with supporting data sources
3. Incorporate spatial accurate parcels into existing Property layer



# Parcel Mapping Techniques

- Legal descriptions
  - Metes and Bounds, Aliquot Parts (PLSS), lot/block system (subdivision) and strip description
- Older Plats
  - Sometimes they have a few Metes and Bounds calls and maybe even a reference to PLSS
  - Most of the time they call boundary dimensions and Right-of-Way widths
- Newer Plats
  - Mostly metes and bounds calls and good reference to PLSS
- Subdivision of Sections
  - Protraction of lines and corners

# PFI Workflow

Parcel  
Foundation  
Initiative

Spatial Accuracy, Methods and Procedures

Goals

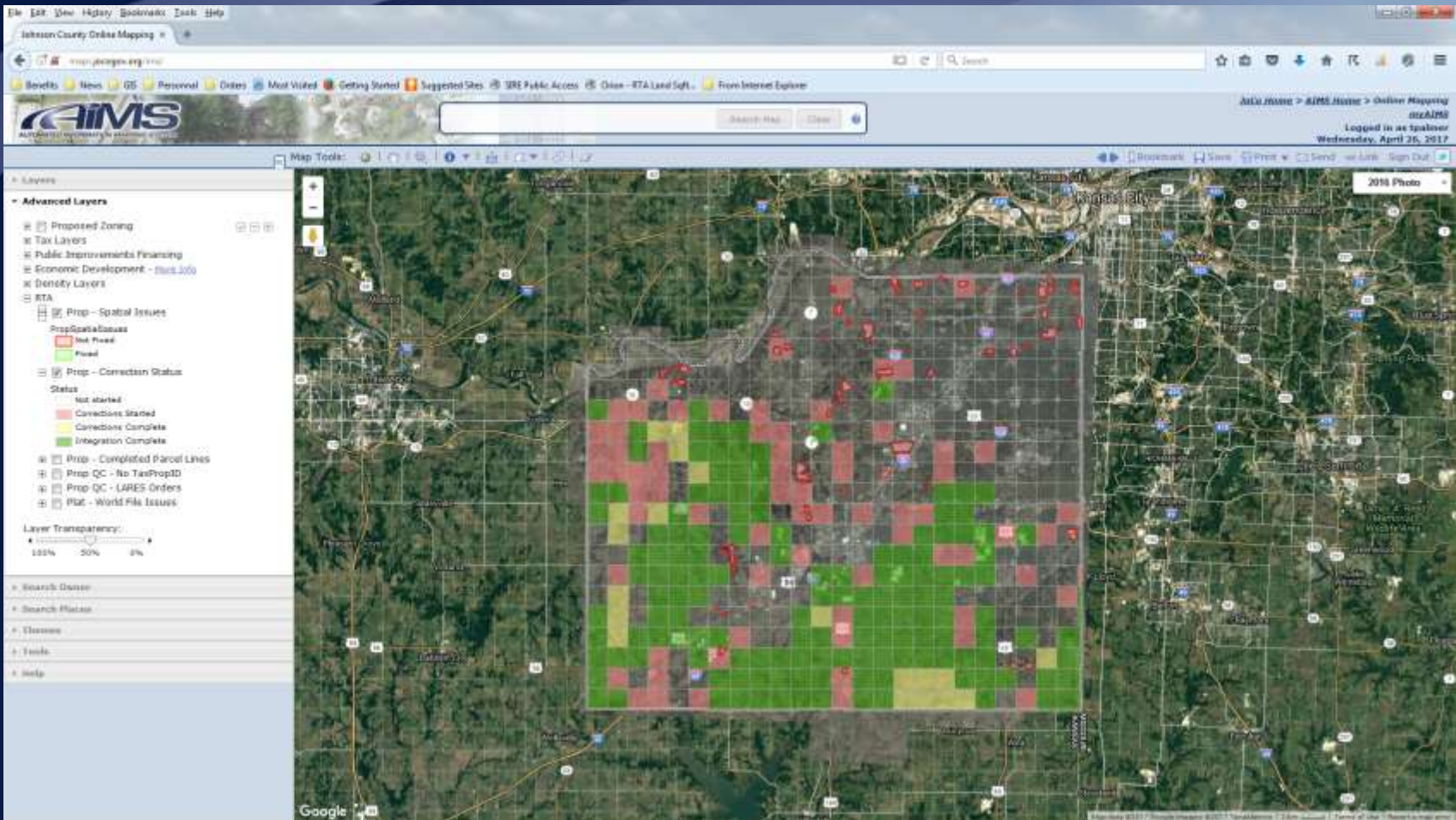
Spatial Accuracy, Methods and Procedures (Confidence in Parcel Data)

Daily Parcel  
Editing

Spatial Accuracy, Methods and Procedures



# AIMS Online Mapping



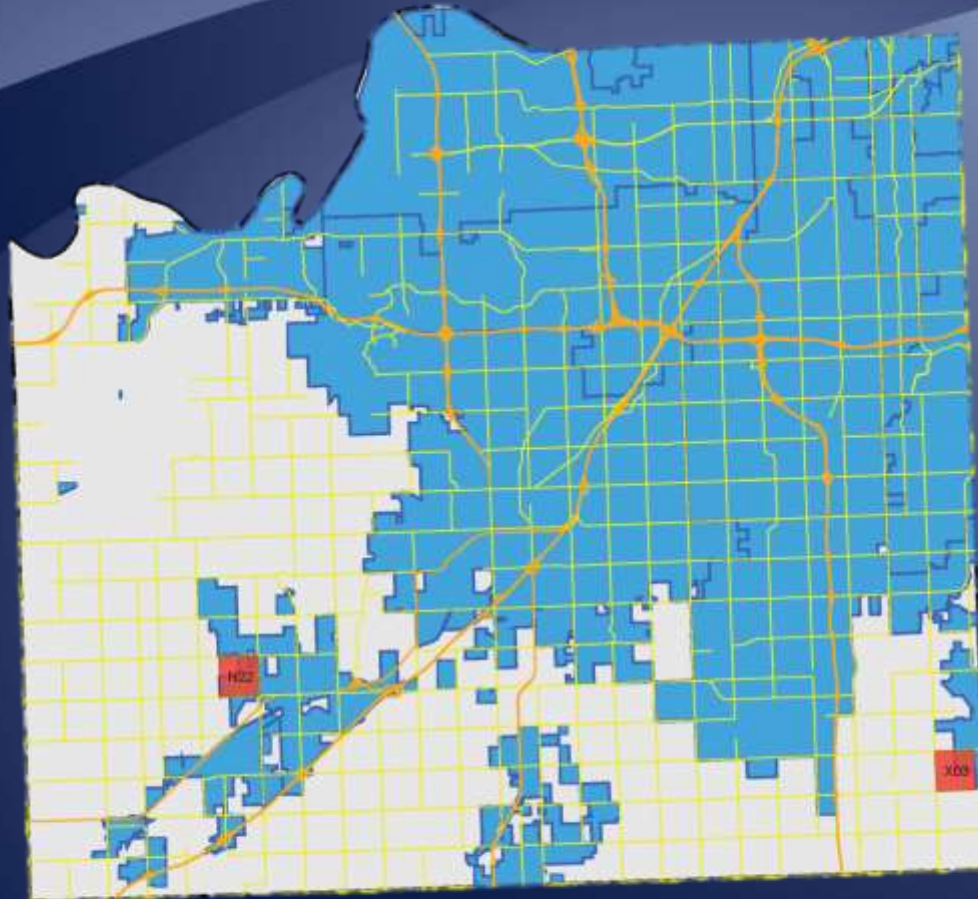
# PFI Progress Notification

From: [mapper@jocogov.org](mailto:mapper@jocogov.org) [<mailto:mapper@jocogov.org>]

Subject: Parcel Foundation Initiative Progress

There were 2 sections integrated yesterday. The sections integrated are X03,N22. See the attached map or to view them in AIMS Online Mapping click the link (<http://maps.jocogov.org/ims/?z=11&ll=38.898381,-94.83175&op=0.5&ls=ay,bq&bm=3&sf=Districts/MapServer/50!Mapno!X03|Districts/MapServer/50!Mapno!N22>). If you have any questions or concerns please contact the Records and Tax Administration Office at 913-715-0775 or AIMS at 913-715-1600. Thanks.

# PFI Progress Notification



[aims.jocogov.org](http://aims.jocogov.org)

# PFI Progress Notification

Sign Up!

[aims.jocogov.org](https://aims.jocogov.org)

**Terrol Palmer**

GIS Developer II

Department of Records and Tax Administration

111 S. Cherry Street, Suite 1200 Olathe, Kansas 66061

Direct (913) 715-2328 | FAX (913) 715-0800

Office (913) 715-0775 | TDD 800-766-3777



[www.jocogov.org](http://www.jocogov.org) | [@jocogov](https://twitter.com/jocogov) | [F/jocogov](https://www.facebook.com/jocogov)

***aims.jocogov.org***

