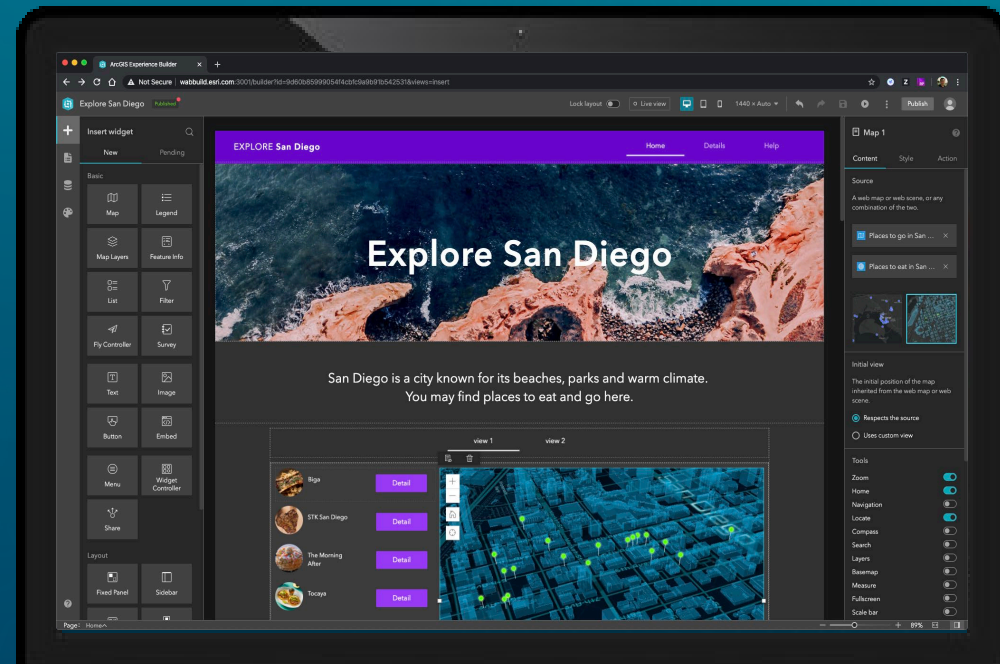


ArcGIS Experience Builder

Lauren Voelker, Sr. Solution Engineer

Agenda

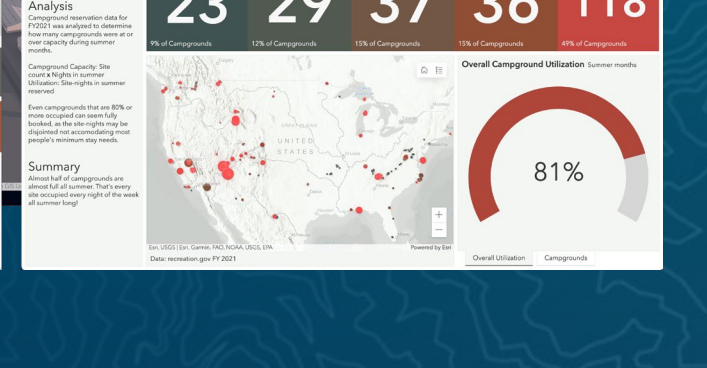
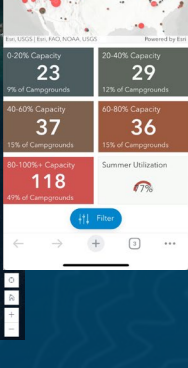
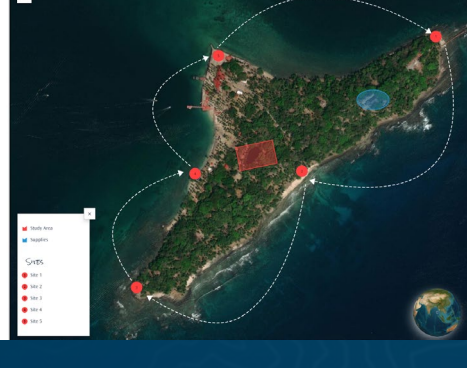
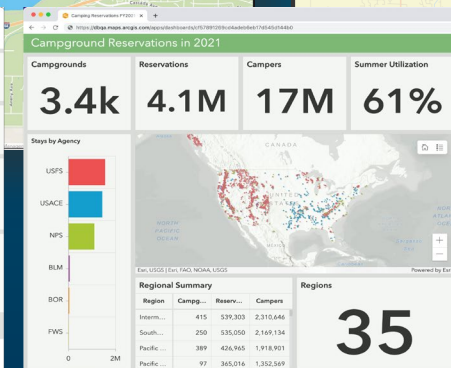
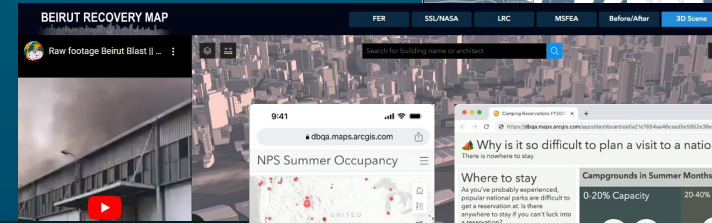
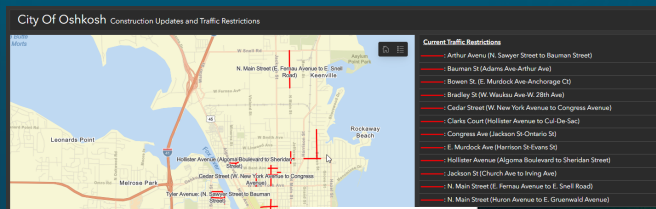
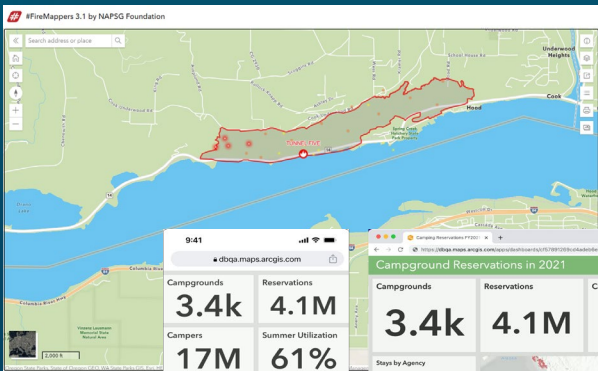
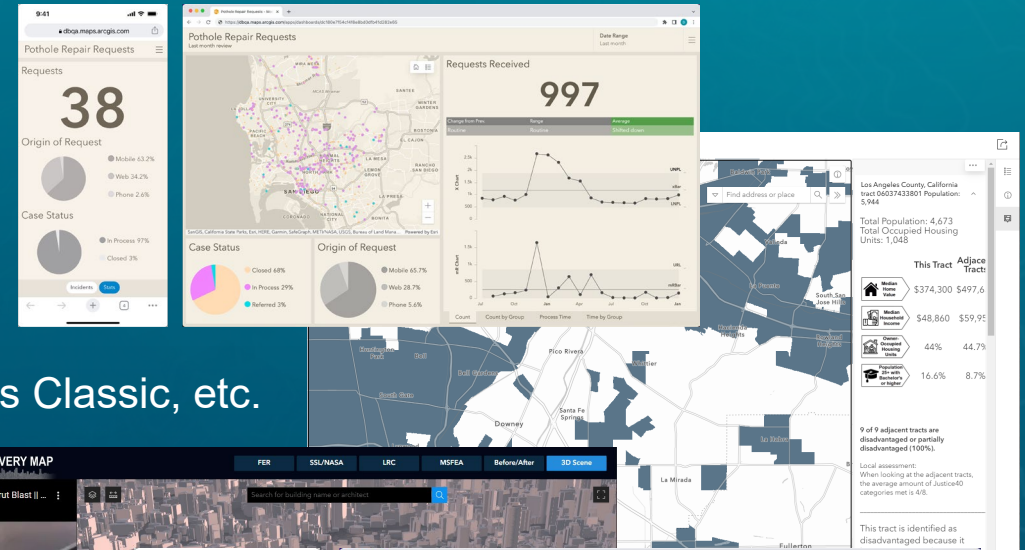
- User Apps
- Overview
- Building Blocks
- Deployment
- Roadmap



ArcGIS Online – Web Mapping Applications by the numbers

Almost 10 Million Web Mapping Apps Including:

- 1.4 Million Story Maps
- 790 K Dashboards
- 350K Instant Apps
- 200 K Web Experiences
- 6.5 Million – Web AppBuilder, Configurable Apps, Story Maps Classic, etc.



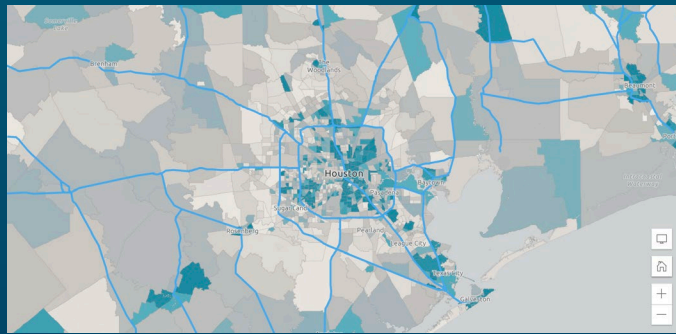
App Builders

```
view.goTo({
  center: [-126, 49]
})
.catch(function(error) {
  if (error.name !== "AbortError") {
    console.error(error);
  }
});
```

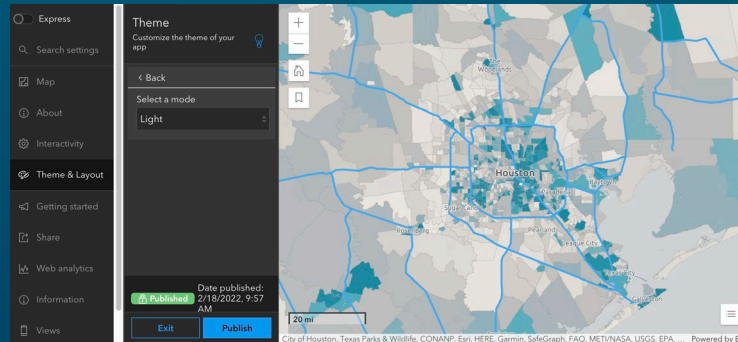
```
queryParams =
  queryParams().apply {
    whereClause = "price > 200"
  }
viewModelScope.launch {
```

Apps are the user experience for your map and data

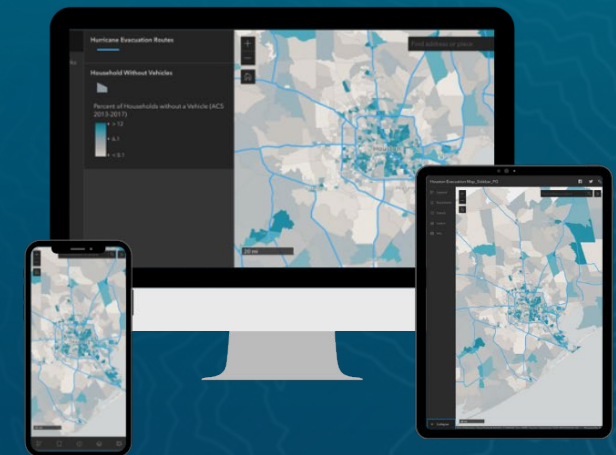
- Present the content with information and tools in a meaningful way
- Leverage capabilities within the map and layers
- Provide meaningful interactivity to enhance user experience



Map and Data



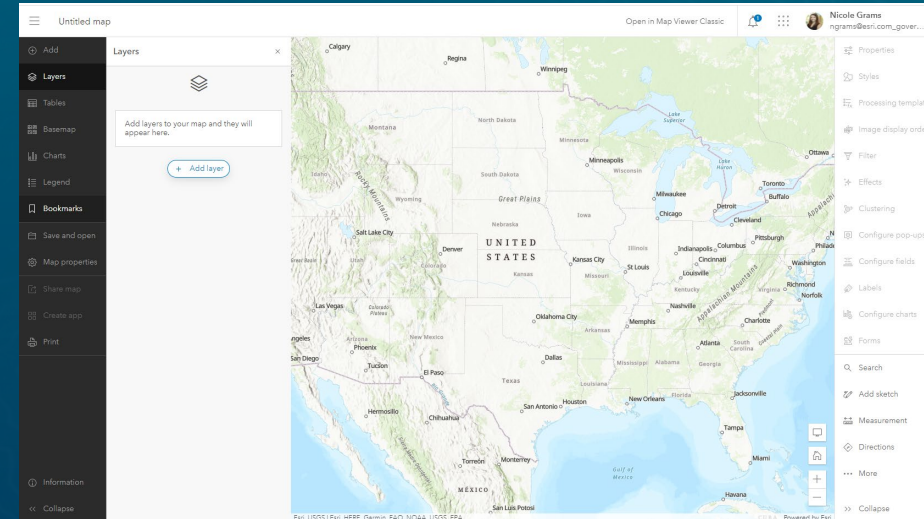
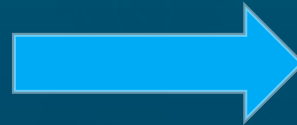
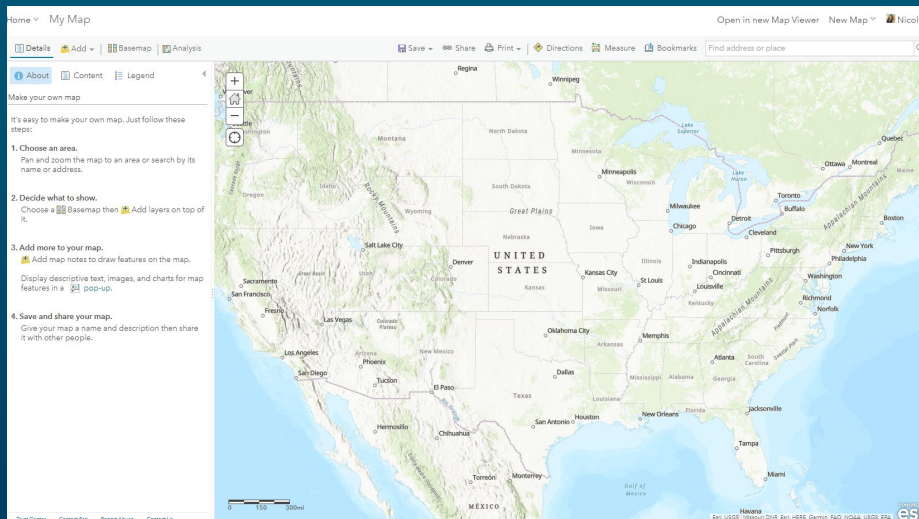
Configure App



Your Published application

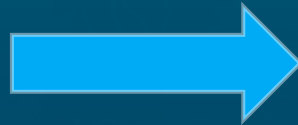
A Tale of Two Map Viewers

- Moving from JavaScript 3.x to 4.x is a BIG undertaking
- Kind of like....



A Tale of Two Map Viewers

- Moving from JavaScript 3.x to 4.x is a BIG undertaking
- Kind of like....



A Tale of Two Map Viewers



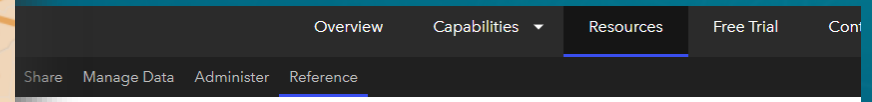
The tale of two ArcGIS Online map viewers: functionality guidance

Mapping

April 13, 2021

Kelly Gerrow-Wilcox
Chris Whitmore
Lynnae Terpstra

The new Map Viewer (formerly known as Map Viewer Beta) and Map Viewer Classic (formerly known as Map Viewer) are both available for production use by all customers. Because the map viewers are built using different versions of the ArcGIS API for JavaScript, and some workflows are not yet available in the new Map Viewer, please use this functionality guide to understand when you need to use a specific map viewer to complete your workflow.



Note:

If Map Viewer Classic is your organization's primary map viewer, it will be automatically updated to Map Viewer in June 2022. Map Viewer Classic will continue to be available and you will still be able to change your organization's primary map viewer as needed.

Map Viewer supports most of the mapping workflows available in Map Viewer Classic, including searching, styling, pop-up configuration, filtering, labeling, and clustering. Additionally, Map Viewer includes some new capabilities that are not supported in Map Viewer Classic. The following capabilities are only available in Map Viewer:

- [Dot density styling](#)
- [Multielement pop-ups](#)
- [Above and Below styling themes](#)
- [Layer blending](#)
- [Effects \(whole layer and feature-specific\)](#)
- [Group layers](#)
- [Vector symbols](#)
- [Labels for clusters](#)
- [Feature display order](#)
- [Clustering for more than 50,000 point features](#)

Amplify the power of your maps and data



Captivate and inform



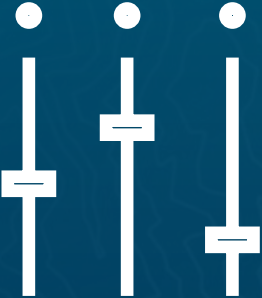
Integrate your data and maps



Engage on any mobile device



Build with minimal effort



Exercise creative freedom

Captivate and Inform



Communicate status

Answer questions

Streamline workflows

Tell a story

Engage the public

```
view.goTo({
  center: [-126, 49]
})
.catch(function(error) {
  if (error.name !== "AbortError") {
    console.error(error);
  }
});
```

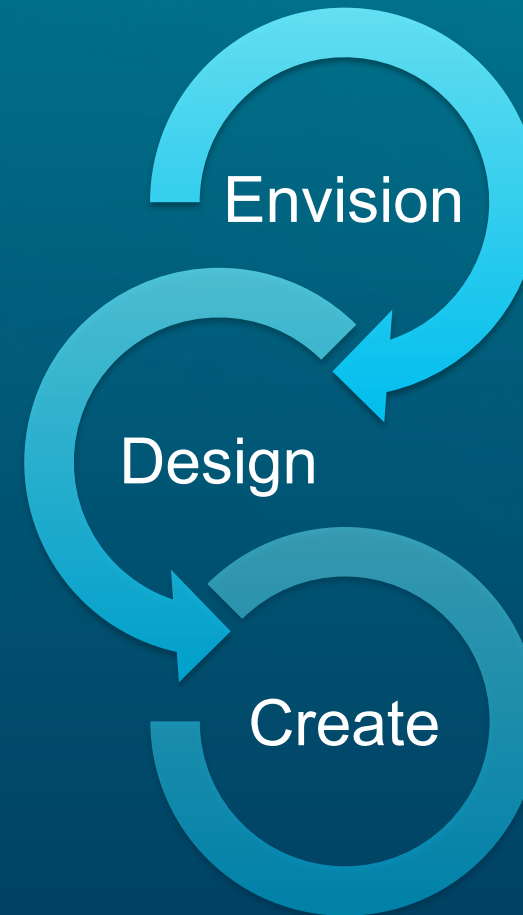
ArcGIS Experience Builder

```
queryParams =
queryParams().apply {
  whereClause = "price > 200"
}
viewModelScope.launch {
```

What Is ArcGIS Experience Builder?

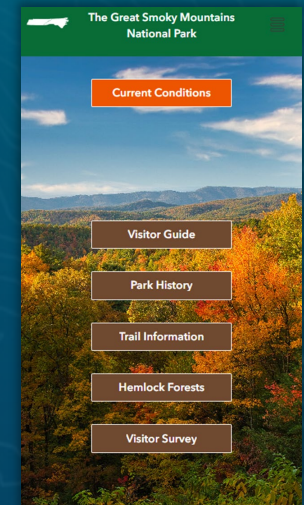
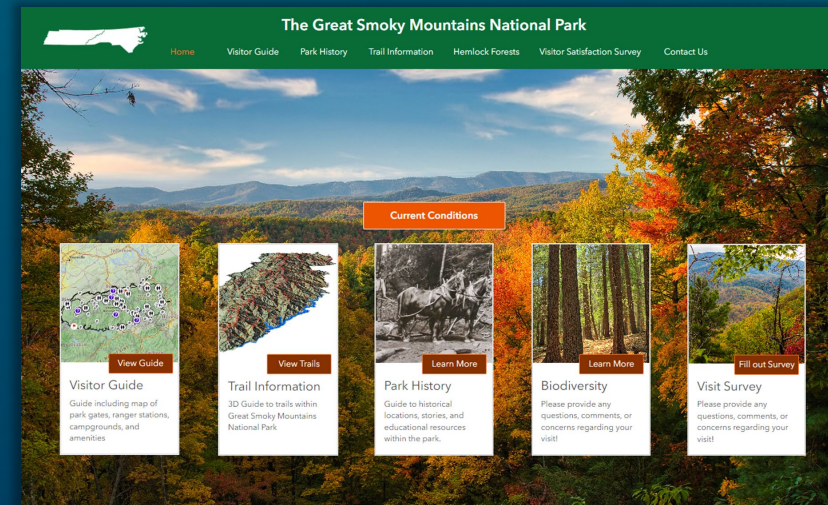
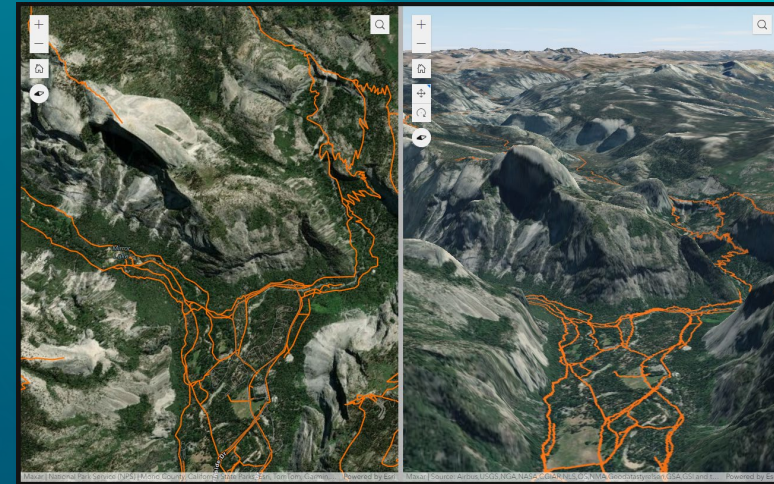
Create web apps you envision

- Design and build web apps
 - Explore design decisions with templates
 - Access ready-to-use widgets
 - Build custom tools
- Data driven
- Modern interface



Key Features

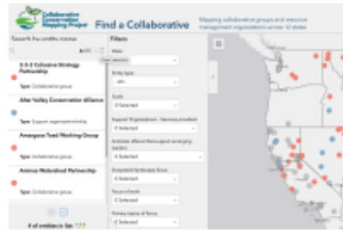
- Flexible design
- Mobile optimization
- Interconnection between widgets
- 2D and 3D in one app
- Integration with other ArcGIS apps
- Extensibility





Silverwood Park Natural History Tour

Take a virtual Natural History tour through Silverwood Park in St. Anthony, MN. This narrated tour explores the park's wildlife, topography, and history.



Find a Collaborative

Discovery tool for the Collaborative Conservation Mapping Project to inventory and map collaborative groups working on conservation and resource management in the Southwest and Rocky Mountain regions.



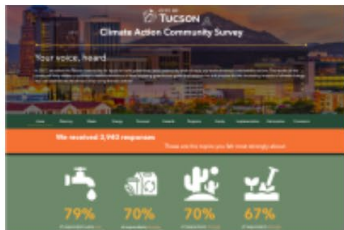
Indicators of Planet Earth

This user friendly portal/gateway is bundled with multi Earth observations in which the visualizations are categorized in form of Earth Indicators, Natural Hazards, Environmental Threats, Ecosystem Health and Monitoring Climate.



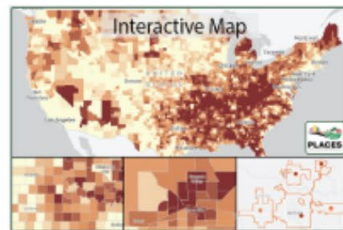
Southeast AK Herring Surveys 2021

Alaska Department of Fish and Game (ADF&G) assesses the abundance of herring stocks annually using a variety of methods including aerial surveys.



Tucson's Climate Action Survey Results

This application displays the results of the Tucson's Climate Action survey in both spatial and graphical forms, pushing the limits of Experience Builder's capabilities.



CDC Places

This application provides an interactive map for model-based chronic disease related estimates at county, place, census tract, and ZIP Code Tabulation Area (ZCTA) levels.



City of Boston Property Audit

This application is to visualize the inventory of all City-owned property in Boston, as well as identify all vacant or underutilized property.

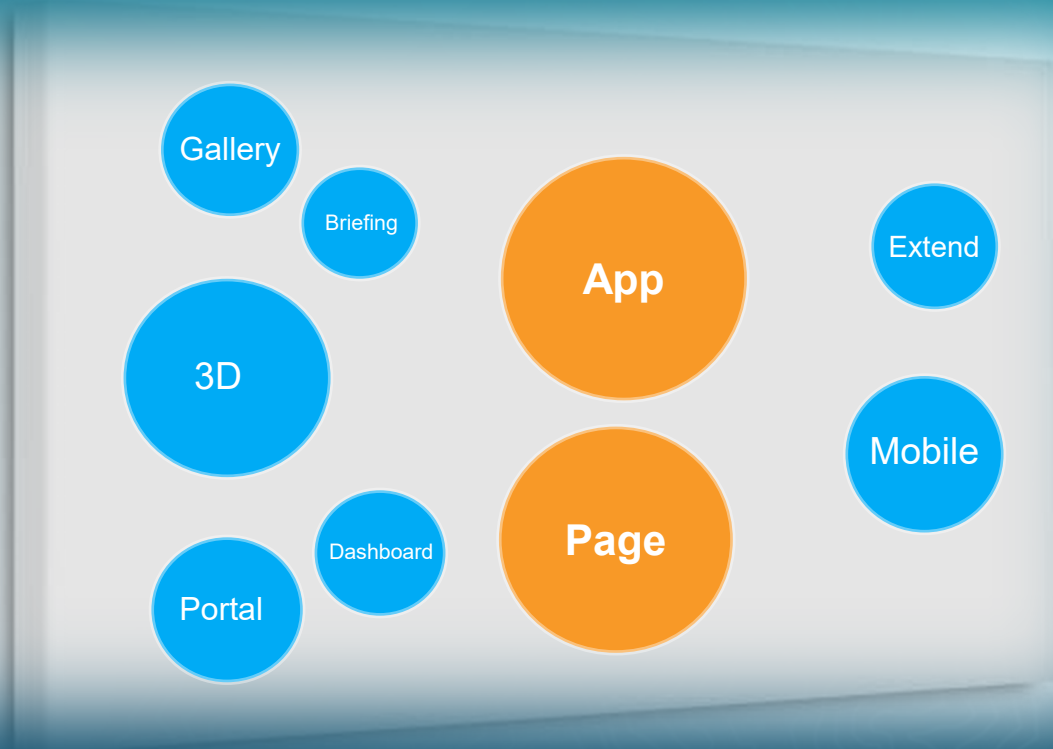


Is My River Fit to Play in?

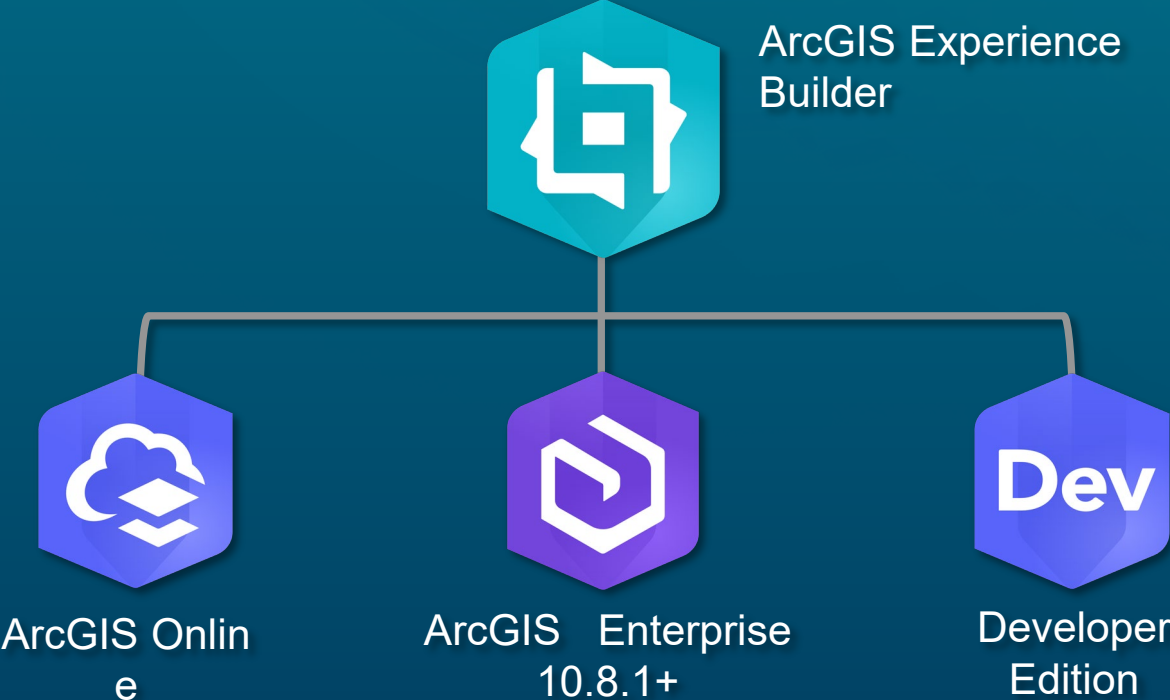
The Rivers Trust has released this interactive map which aims to help shed the light on the reality of sewage pollution and allow river users to weigh up the risks before taking to the water.



Canvas



Accessing ArcGIS Experience Builder



ArcGIS Experience Builder Licensing



- Essential Apps Bundle
 - Must have a Creator or GIS Professional user type to create experiences
- ArcGIS Developer subscription
 - For developers who are not part of an ArcGIS organization to use Developer Edition

**An
experience**

**Design
&
Configure**

**User Interface
builder**



Template



Widget



Data source



Theme



Extensibility

Templates

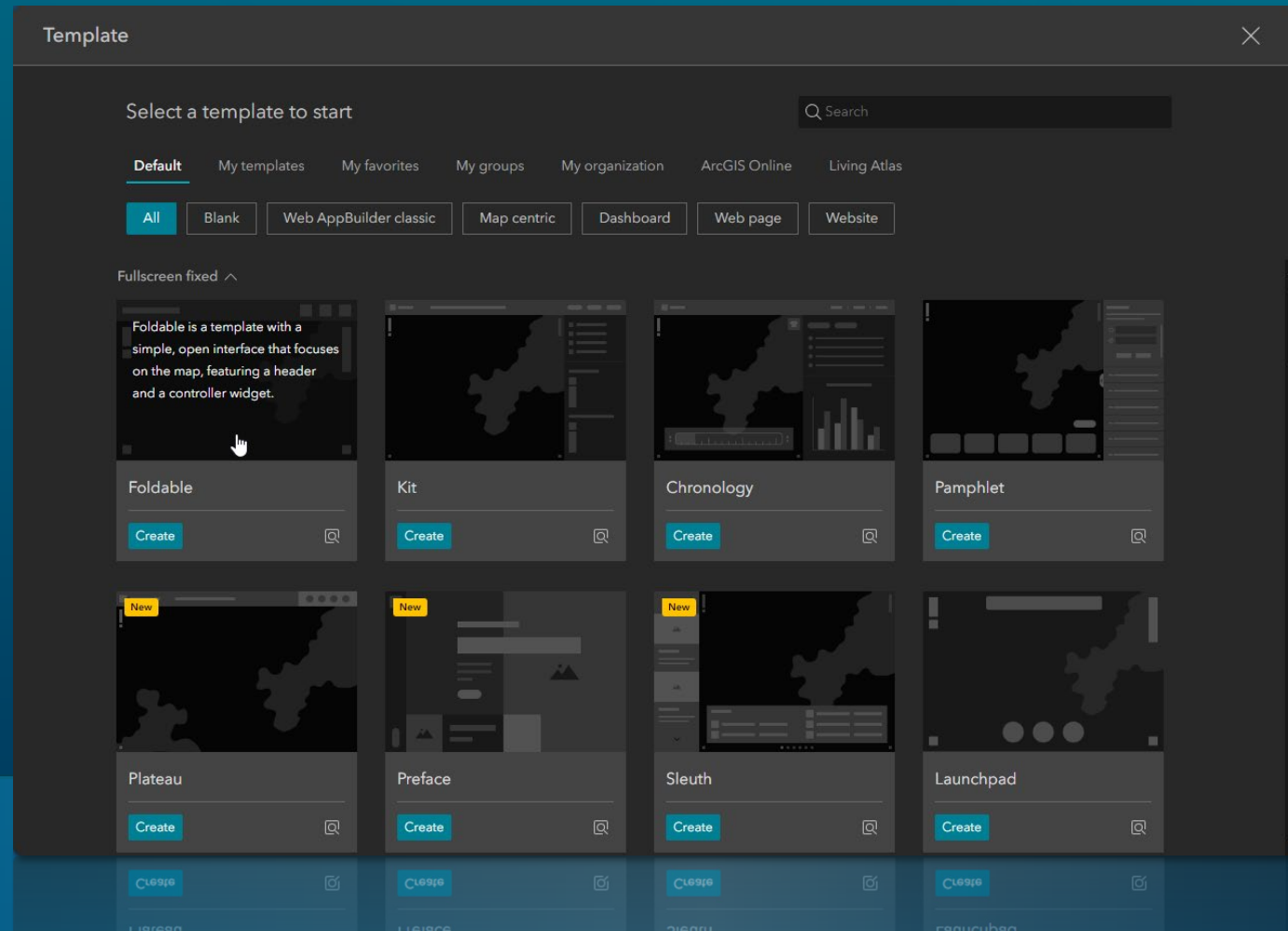
Building block

```
view.goTo({
  center: [-126, 49]
})
.catch(function(error) {
  if (error.name !== "AbortError") {
    console.error(error);
  }
});
```

```
queryParams =
  queryParams().apply {
    whereClause = "price > 200"
  }
viewModelScope.launch {
```

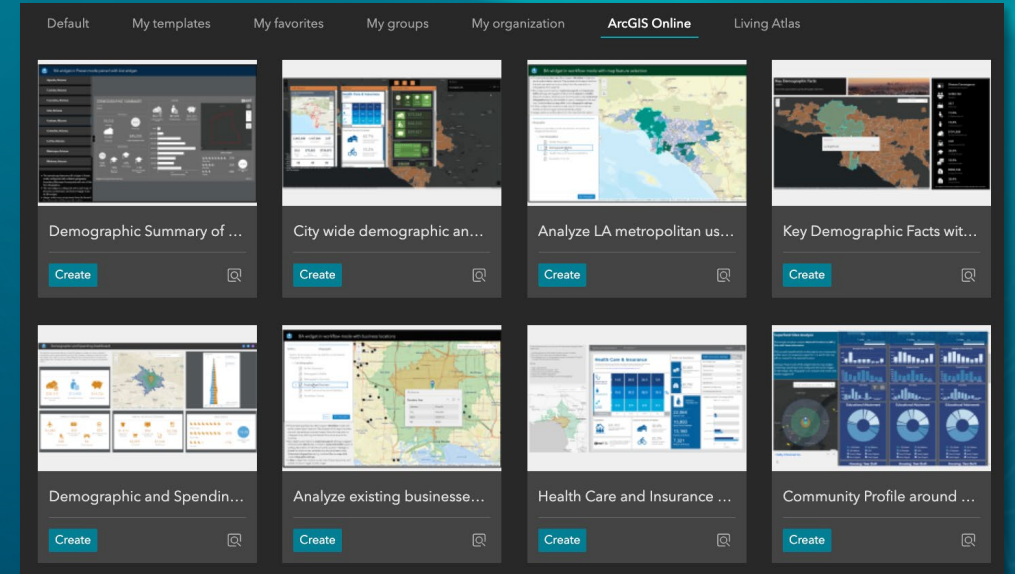
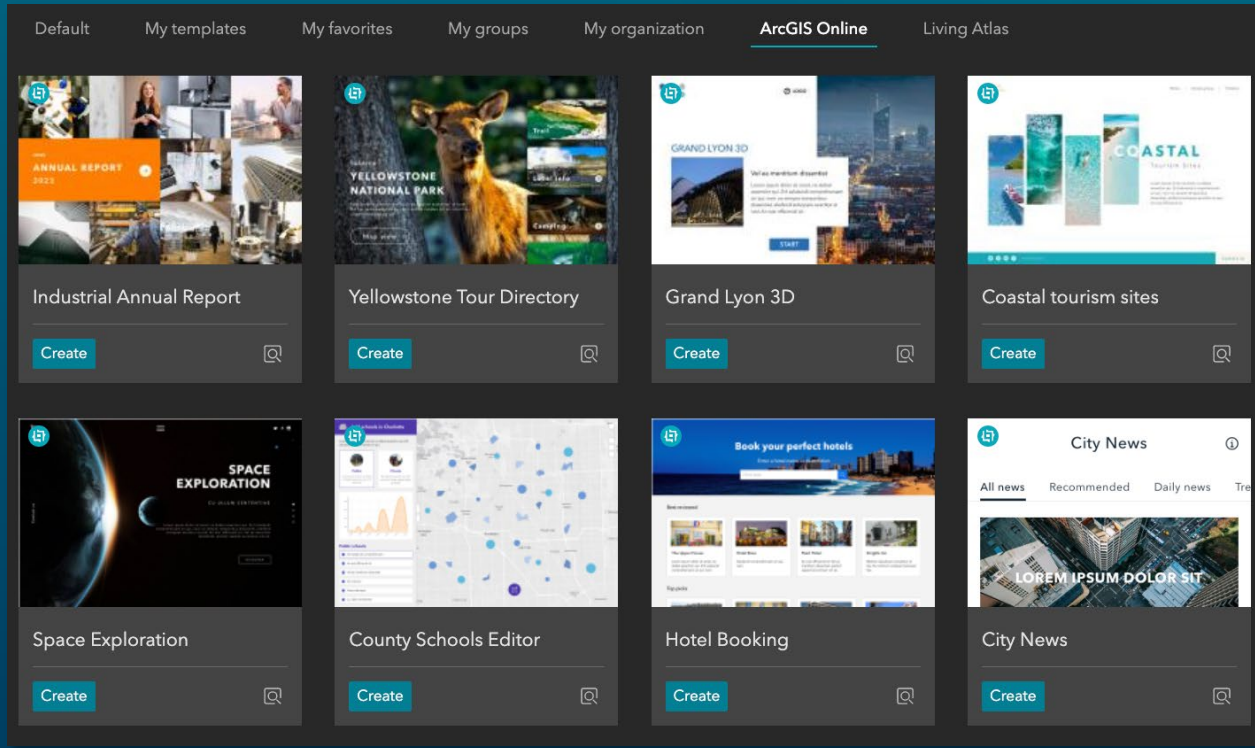
Default Templates

- Fullscreen
- Scrolling
- Grid



Public Templates

Available in ArcGIS Online



Business
Analyst
Templates

Showcase
New
Features

Widgets

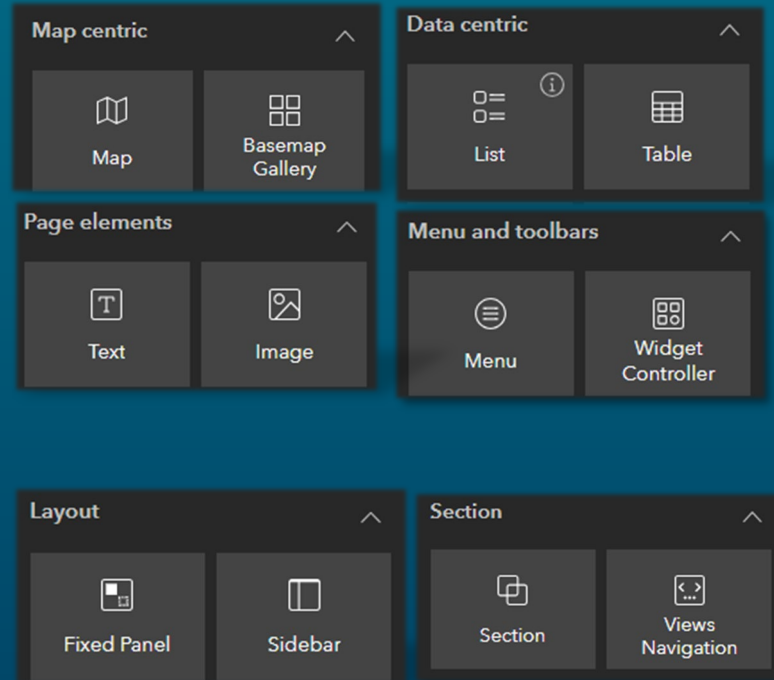
Building block

```
view.goTo({
  center: [-126, 49]
})
.catch(function(error) {
  if (error.name !== "AbortError") {
    console.error(error);
  }
});
```

```
queryParams =
  queryParams().apply {
    whereClause = "price > 200"
  }
viewModelScope.launch {
```

Types of Widgets

- Map centric
- Data centric
- Page elements
- Menu and toolbars
- Layout
- Section

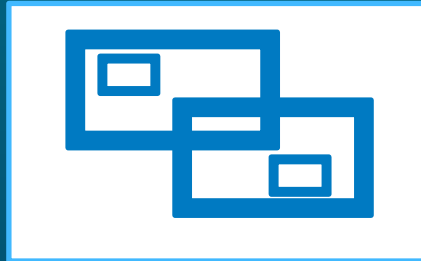


Layout Widgets

Row



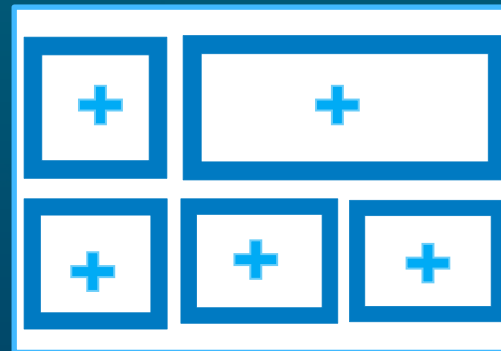
Fixed Panel



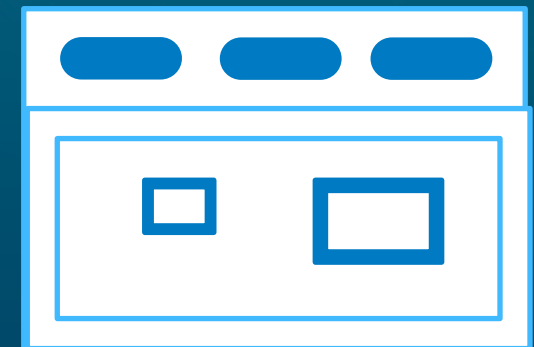
Column



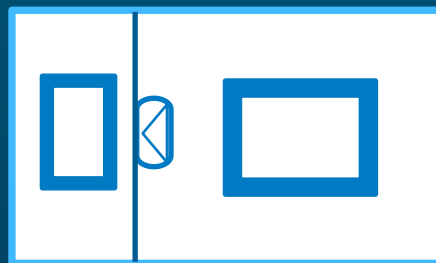
Grid



Section & View



Sidebar



Widget Properties

Content

Source

A web map or web scene, or any combination of the two.

Select map

Options

- Zoom to
- Show or hide labels
- Transparency

Style

Size & Position

Width

Height

0 % 0 % 0 %

Action

Message action | Data action

1 Select a trigger

2 Specify a target

3 Choose actions

Data Source

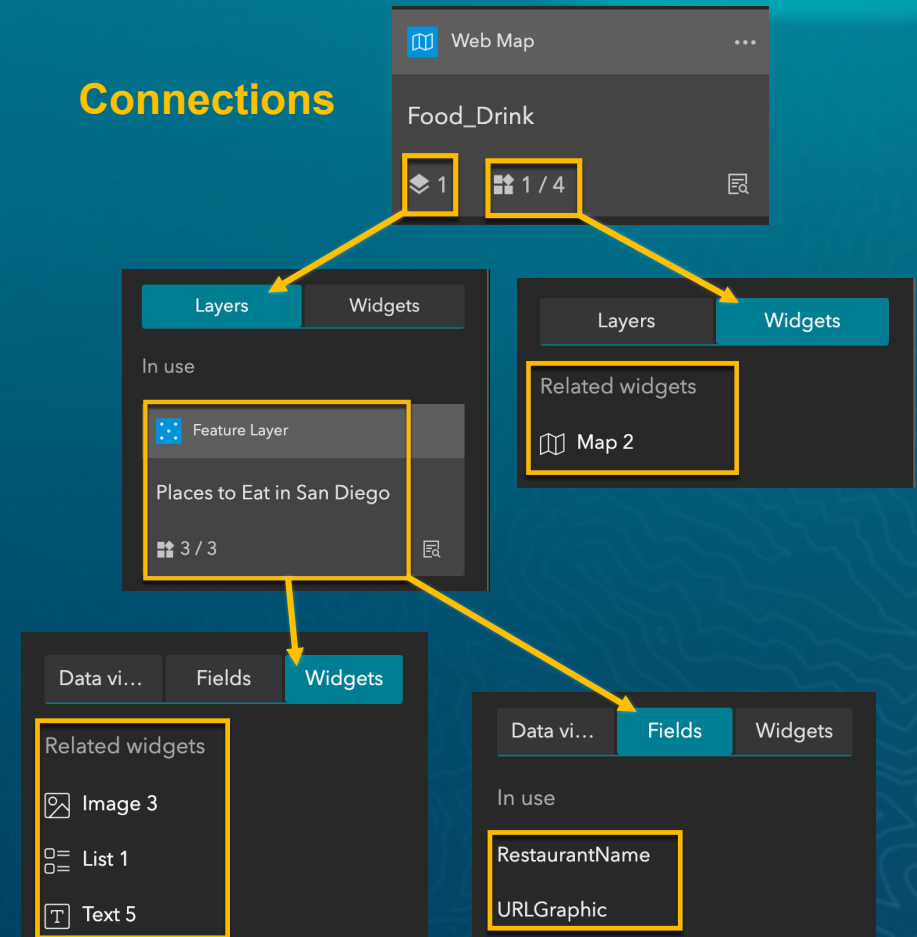
Building block

```
view.goTo({
  center: [-126, 49]
})
.catch(function(error) {
  if (error.name !== "AbortError") {
    console.error(error);
  }
});
```

```
queryParameters =
QueryParameters().apply {
  whereClause = "price > 200"
}
viewModelScope.launch {
```

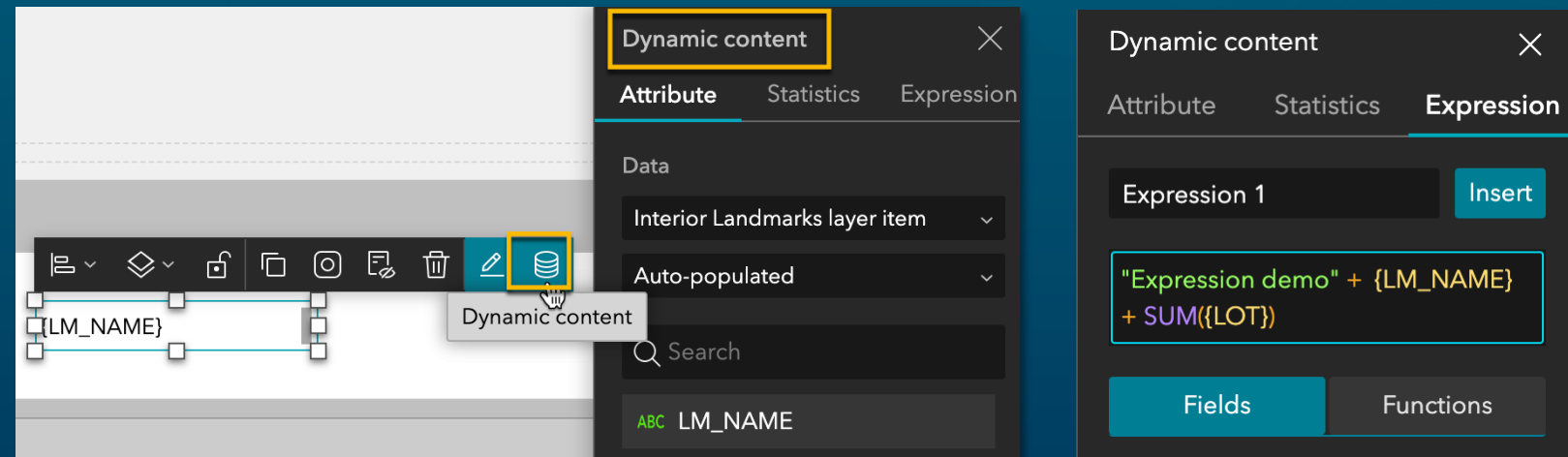
Data Source

- Manage and share data at the app (framework) level
 - Hosted feature layers
 - Feature & map services
 - Feature collections
 - Scene layers
- Show connections between Map, Layer, Field, Widget
- Web map & Web scene are one of data sources



Dynamic Content

- Dynamically display attribute values, statistics or expressions
 - In Image, Text, Button, List, Card, and Embed
 - Must connect to data



The image shows a software interface for configuring dynamic content. On the left, a data field `{LM_NAME}` is connected to a dynamic content widget. The right panel shows the 'Dynamic content' configuration dialog with the 'Expression' tab selected. The expression being configured is: `"Expression demo" + {LM_NAME} + SUM({LOT})`. The dialog also shows a search bar and a list of fields including `LM_NAME`.

Theme

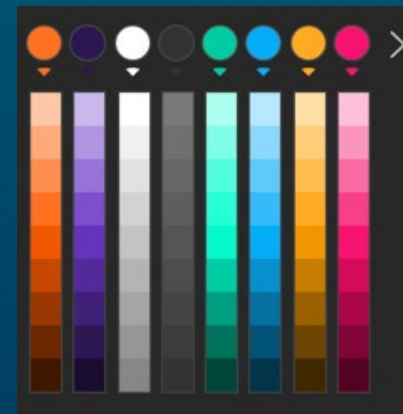
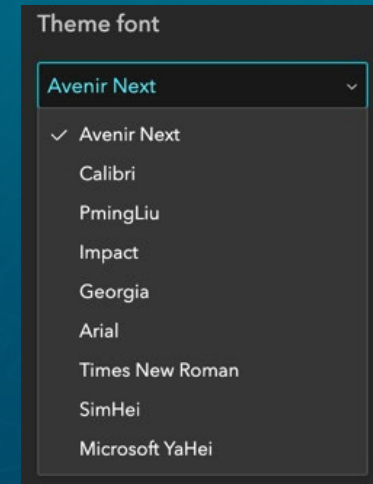
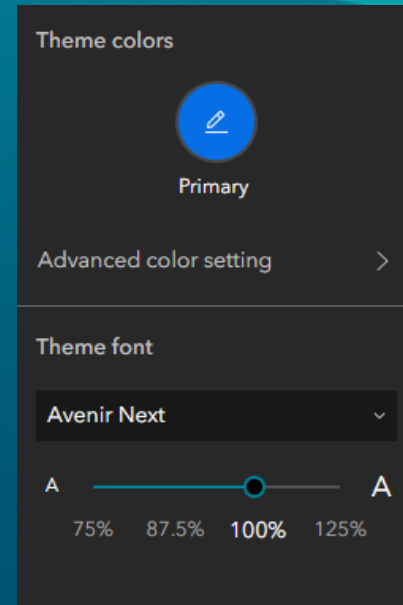
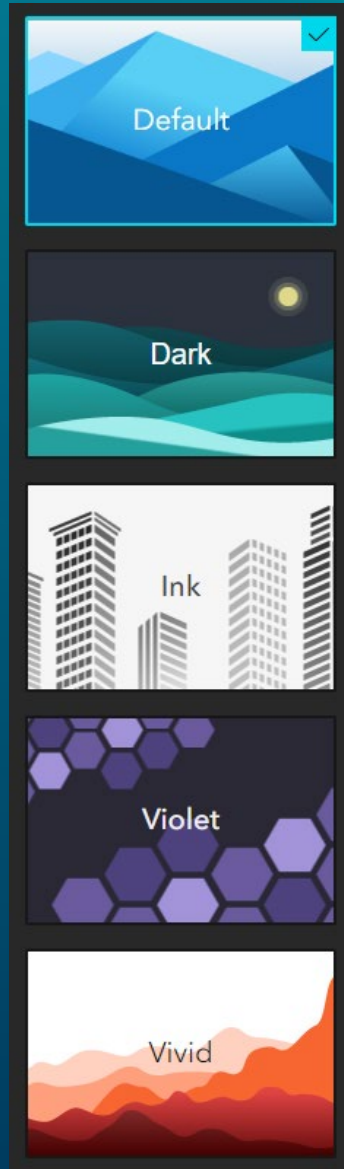
Building block

```
view.goTo({
  center: [-126, 49]
})
.catch(function(error) {
  if (error.name !== "AbortError") {
    console.error(error);
  }
});
```

```
queryParams =
  queryParams().apply {
    whereClause = "price > 200"
  }
viewModelScope.launch {
```

Theme

- Defines color and font
- Customized options
 - Color
 - Font style
 - Font size



Page & Window

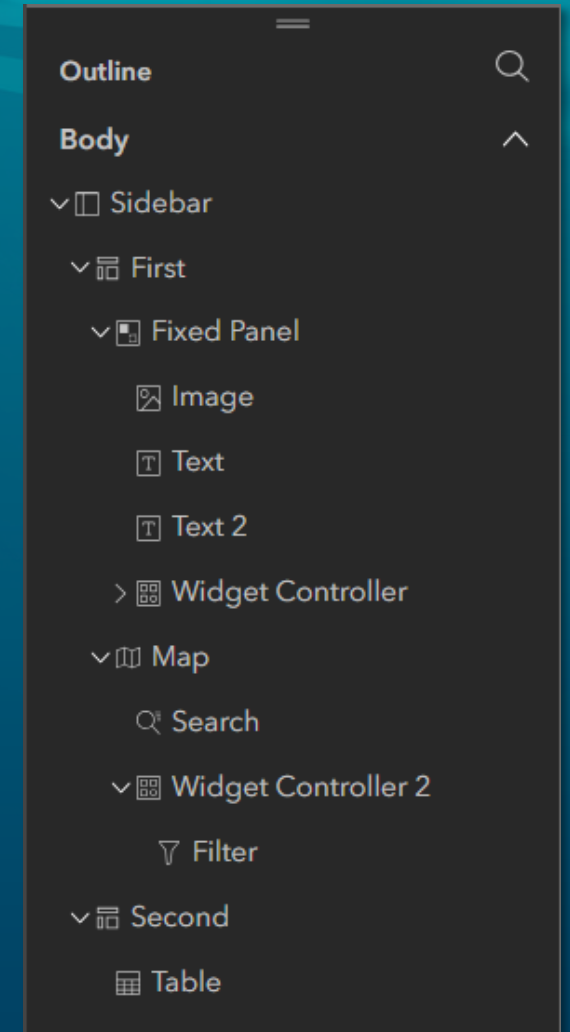
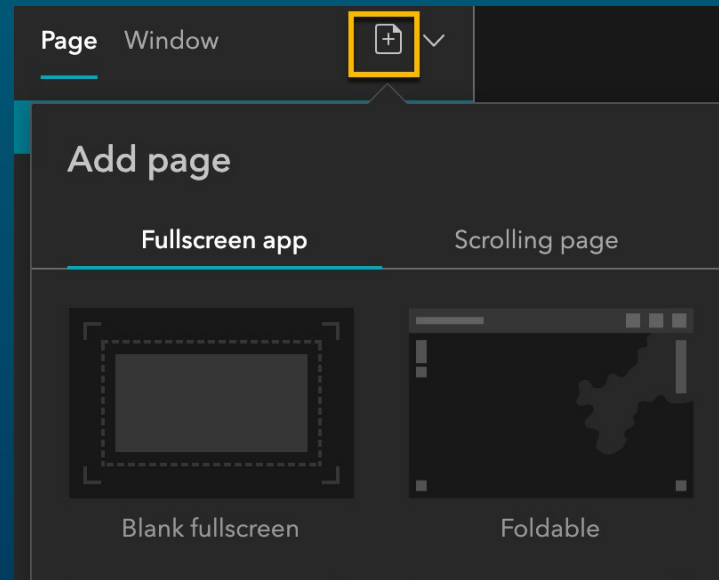
Building block

```
view.goTo({
  center: [-126, 49]
})
.catch(function(error) {
  if (error.name !== "AbortError") {
    console.error(error);
  }
});
```

```
queryParams =
  QueryParameters().apply {
    whereClause = "price > 200"
  }
viewModelScope.launch {
```

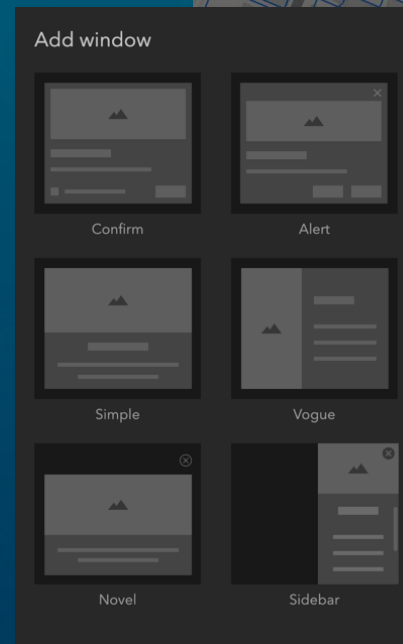
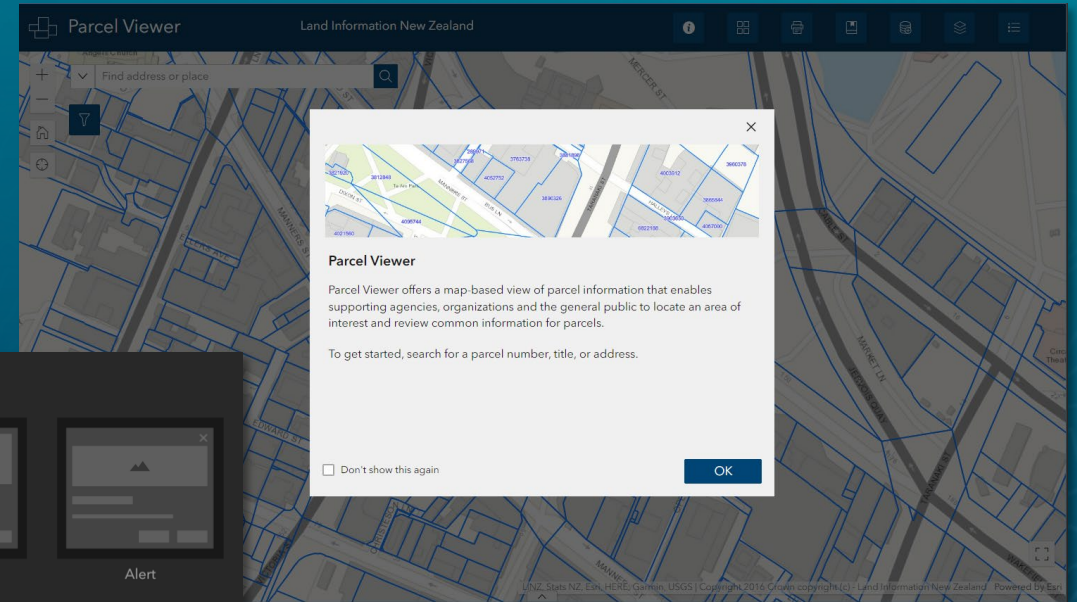
Page

- Header, Footer, Open with window
- **Outline** helps navigate widgets on the page
- Page templates



Window

- Display Splash screens or information
 - shown in a fixed position like a splash screen
 - Non-modal windows unblocking pages
- Anchored mode
 - shown around the widget that triggers it
- Window templates

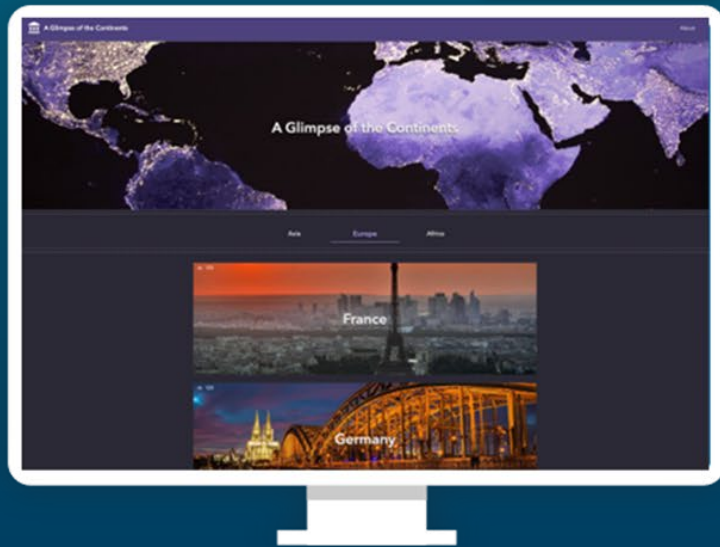


Mobile Optimization

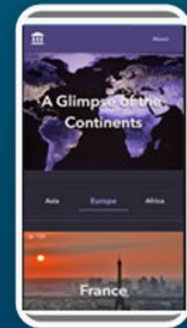
One app

3 configurations

Large



Small

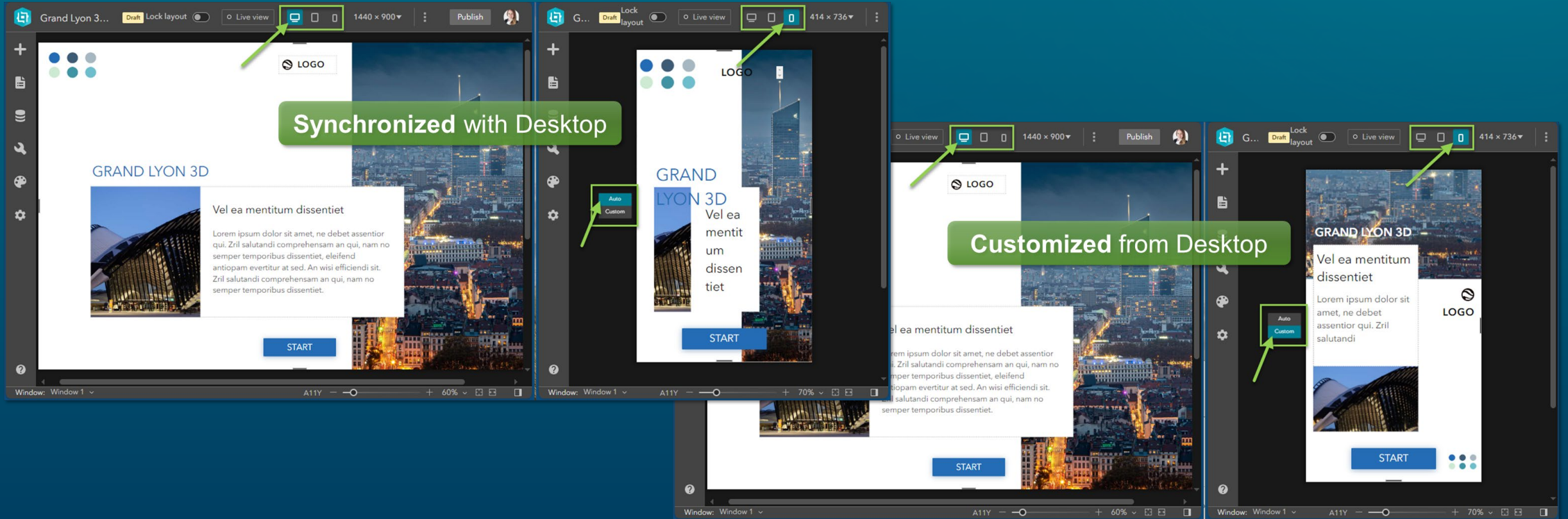


Medium



Key to Mobile Optimization

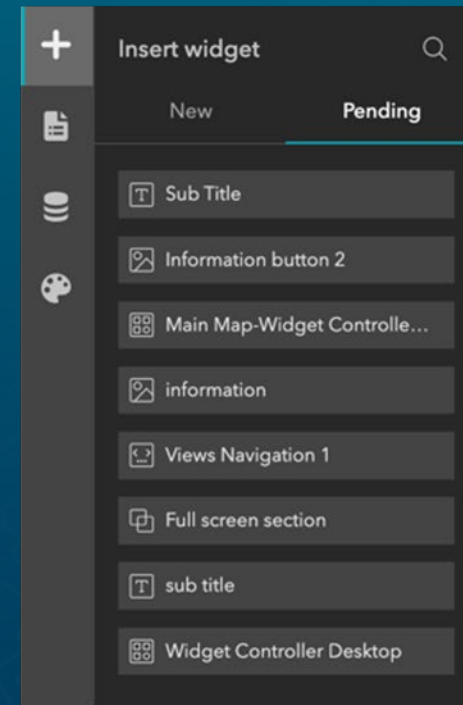
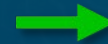
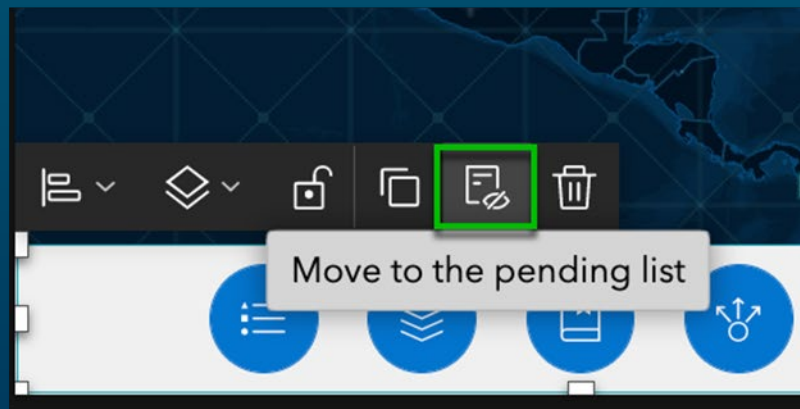
Auto vs Custom mode



Key to Mobile Optimization

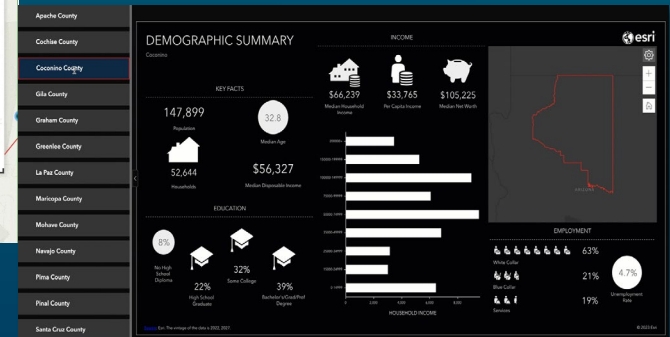
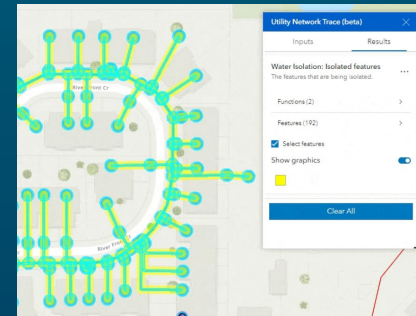
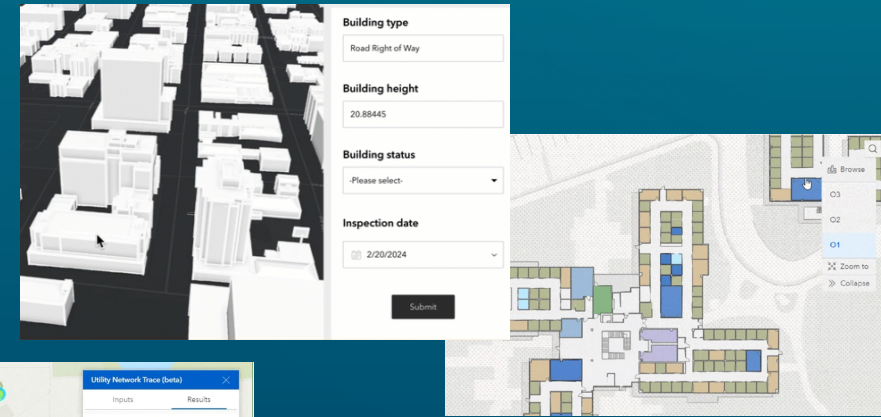
Pending list

- Changing **position**, **size**, and **style** of widgets won't affect other screen sizes
- Changing **content** of widgets or **removing** widgets affects other screen sizes
 - Move to the **pending list**



Integration with ArcGIS Apps

- Survey widget (ArcGIS Survey123)
- Business Analyst widget (ArcGIS Business Analyst)
- Floor Filter widget (ArcGIS Indoors)
- Suitability Modeler widget (ArcGIS GeoPlanner)
- Utility Network Trace widget (Utility Network)



Publish Apps

```
view.goTo({
  center: [-126, 49]
})
.catch(function(error) {
  if (error.name !== "AbortError") {
    console.error(error);
  }
});
```

```
queryParams =
queryParams().apply {
  whereClause = "price > 200"
}
viewModelScope.launch {
```

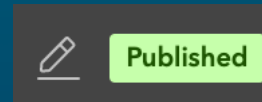
Publish Apps



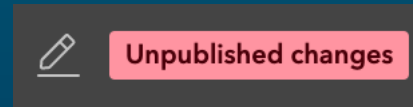
Draft



Published

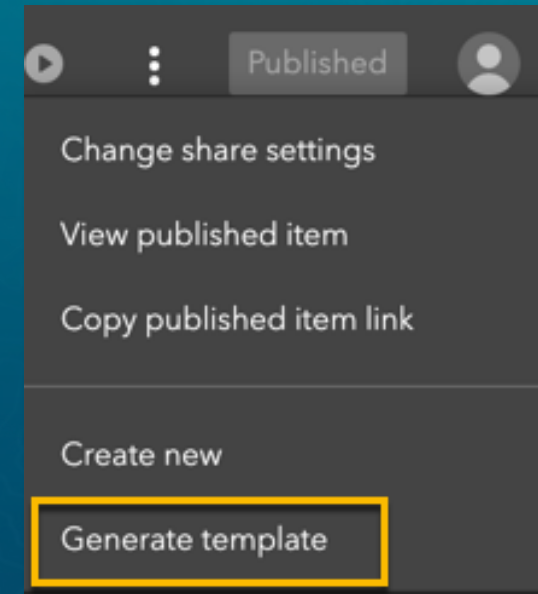
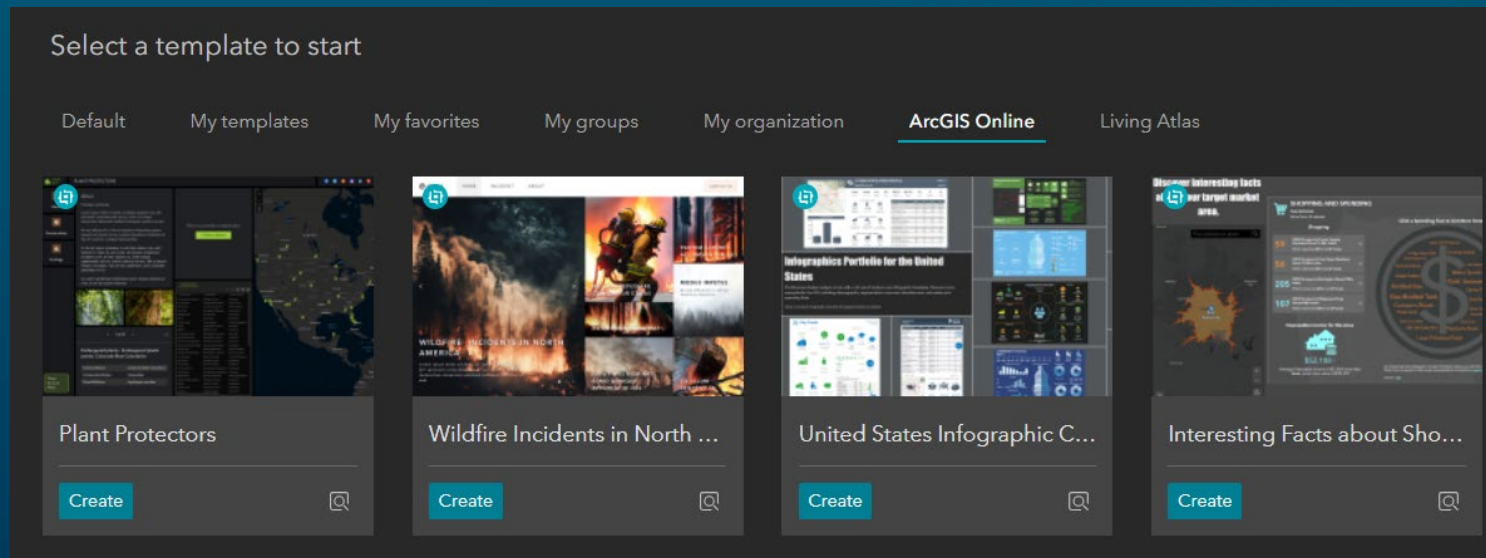


Unpublished changes



Generate Templates

- Create your own starters for reuse and branding
- Share with others



Developer Edition

Low code

```
view.goTo({
  center: [-126, 49]
})
.catch(function(error) {
  if (error.name !== "AbortError") {
    console.error(error);
  }
});
```

```
queryParams =
queryParams().apply {
  whereClause = "price > 200"
}
viewModelScope.launch {
```

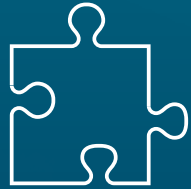
Key Features

Open-Source Widgets



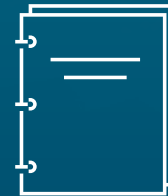
- Ready-to-use widgets provide high quality and stress-tested code samples
- Learn from and easily modify them to meet your needs.

Jimu Library



- A collection of Legos used in ready-to-use widgets
- Quickly assemble them to build your own castle

Design System



- Storybook as a playground for UI components
- Preview and play UI components with various styles

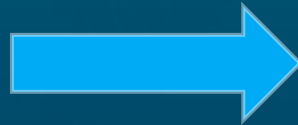
Coded Once Used Anywhere



- Custom widgets and themes are portable
- Coded once and used anywhere

A Tale of Two App Builders

- Moving from JavaScript 3.x to 4.x is a BIG undertaking
- Kind of like....



Web AppBuilder Retirement Timeline

```
view.goTo({
  center: [-126, 49]
})
.catch(function(error) {
  if (error.name !== "AbortError") {
    console.error(error);
  }
});
```

```
queryParams =
queryParams().apply {
  whereClause = "price > 200"
}
viewModelScope.launch {
```

Web AppBuilder Retirement Timeline

- Developer Edition: **July 2024**
- ArcGIS Web AppBuilder in ArcGIS Enterprise
 - Deprecated now, not tied to a specific release
 - Last release in **first half of 2025** (Long-Term Support release)
- ArcGIS Web AppBuilder in ArcGIS Online: **end of 2025**

What Does Retirement Mean?

- No further bug fixes or enhancements
- Updates to browsers could introduce functional or security issues which will not be addressed by Esri
- No technical support from Esri
- Your apps will continue to work

What Does Retirement Mean?

Developer Edition

Downloads are still available. The developer edition pages have been updated to reflect its status as retired technology.

ArcGIS Enterprise

Web AppBuilder continues to be fully supported in accordance with the [ArcGIS Enterprise product lifecycle](#). It will only receive critical bug fixes, such as security updates, with no functional enhancements.

ArcGIS Online

Existing apps continue to work and new apps cannot be created or edited.

```
view.goTo({
  center: [-126, 49]
})
.catch(function(error) {
  if (error.name !== "AbortError") {
    console.error(error);
  }
});
```

Migration Resources

```
queryParams =
queryParams().apply {
  whereClause = "price > 200"
}
viewModelScope.launch {
```


WAB		WAB		WAB		WAB		WAB		WAB		WAB	
About	●	Coordinate Conversion	●	Full Screen	●	Layer List	●	Query	●	Splash	●	Daylight (3D)	●
Add Data	●	Cost Analysis	○	GeoLookup	○	Legend	●	Related Table Charts	○	Stream	○	Navigate (3D)	●
Analysis	◐	Data Aggregation	○	Geoprocessing	◐	Measurement	●	Report Feature	◐	Suitability Modeler	●	Slider (3D)	●
Attribute Table	●	Directions	●	Grid Overlay	○	My Location	●	Reviewer Dashboard	○	Summary	●	Measurement (3D)	●
Batch Attribute Editor	◐	District Lookup	○	Gridded Reference Graphic	○	Near Me	●	Scalebar	●	Swipe	●		
Basemap Gallery	●	Distance and Direction	○	Group Filter	◐	Network Trace	●	Screening	●	Threat Analysis	○		
Bookmark	●	Draw	●	Home Button	●	Oblique Viewer	●	Search	●	Time Slider	●		
Business Analyst	●	Edit	●	Image Measurement	◐	Overview Map	●	Select	●	Visibility	○		
Chart	●	Emergency Response Guider	○	Incident Analysis	●	Parcel Drafter	○	Share	●	Zoom Slider	●		
Controller	●	Extent Navigate	◐	Infographic	●	Print	●	Situation Awareness	●	3DFx	○		
Coordinates	●	Filter	●	Info Summary	●	Public Notification	○	Smart Editor	●	Compass (3D)	●		

Functionality Matrix between Web AppBuilder (WAB) and Experience Builder (ExB)

● Available in Experience Builder in ArcGIS Online

◐ Planned


○ Not Planned

WAB

About	●	Coordinate Conversion	●	Full Screen	●	Layer List	●	Query	●	Splash	●	Daylight (3D)	●
Add Data	●	Cost Analysis	○	GeoLookup	○	Legend	●	Related Table Charts	○	Stream	○	Navigate (3D)	●
Analysis	●	Data Aggregation	○	Geoprocessing	●	Measurement	●	Report Feature	●	Suitability Modeler	●	Slider (3D)	●
Attribute Table	●	Directions	●	Grid Overlay	○	My Location	●	Reviewer Dashboard	○	Summary	●	Measurement (3D)	●
Batch Attribute Editor	●	District Lookup	○	Gridded Reference Graphic	○	Near Me	●	Scalebar	●	Swipe	●		
Basemap Gallery	●	Distance and Direction	○	Group Filter	●	Network Trace	●	Screening	●	Threat Analysis	○		
Bookmark	●	Draw	●	Home Button	●	Oblique Viewer	●	Search	●	Time Slider	●		
Business Analyst	●	Edit	●	Image Measurement	●	Overview Map	●	Select	●	Visibility	○		
Chart	●	Emergency Response Guider	○	Incident Analysis	●	Parcel Drafter	○	Share	●	Zoom Slider	●		
Controller	●	Extent Navigate	●	Infographic	●	Print	●	Situation Awareness	●	3DFx	○		
Coordinates	●	Filter	●	Info Summary	●	Public Notification	○	Smart Editor	●	Compass (3D)	●		

Migration Path for Widgets Not in the Plan

Other Products	ArcGIS Capabilities (Hosted feature Layer, Arcade, Web Map)	Other Widgets or Deprecated	Custom
Parcel Drafter	Cost Analysis	Visibility	Grid Overlay
3DFx	Data Aggregation	Geo Lookup	Emergence Response Guide
Public Notification	Related Table Charts	Reviewer Dashboard	Threat Analysis
District Lookup			Distance and Direction
			Gridded Reference Graphic
			Stream

- > [Get started](#)
- > [Configure apps](#)
- > [Configure 2D widgets](#)
- > [Configure 3D widgets](#)
- ▼ [Migrate to ArcGIS Experience Builder](#) 
- [ArcGIS Web AppBuilder retirement](#)
- [Experience Builder for Web AppBuilder users](#)
- [Which Web AppBuilder widgets are available in Experience Builder?](#)
- [Migration FAQ](#)

Experience Builder for Web AppBuilder users

[ArcGIS Online](#) | [Other versions](#) ▼ | [Help archive](#)


You cannot directly convert custom widgets, themes, and apps from Web AppBuilder to Experience Builder. However, nearly all of the functionality you used in Web AppBuilder is available in Experience Builder, along with additional functionality. If you are familiar with Web AppBuilder and want to get started with Experience Builder, the following sections outline what you need to do.

Identify Web AppBuilder features that are available in Experience Builder

To help you plan your migration, review the [functionality matrix for Web AppBuilder and Experience Builder](#). Experience Builder functionality equivalents are listed for all Web AppBuilder widgets. You can also identify when each widget first became available or will be come available in ArcGIS Enterprise and the developer edition.

Discover Experience Builder and how it's different from Web AppBuilder

In this topic

[Identify Web AppBuilder features that are available in Experience Builder](#)  STATUS

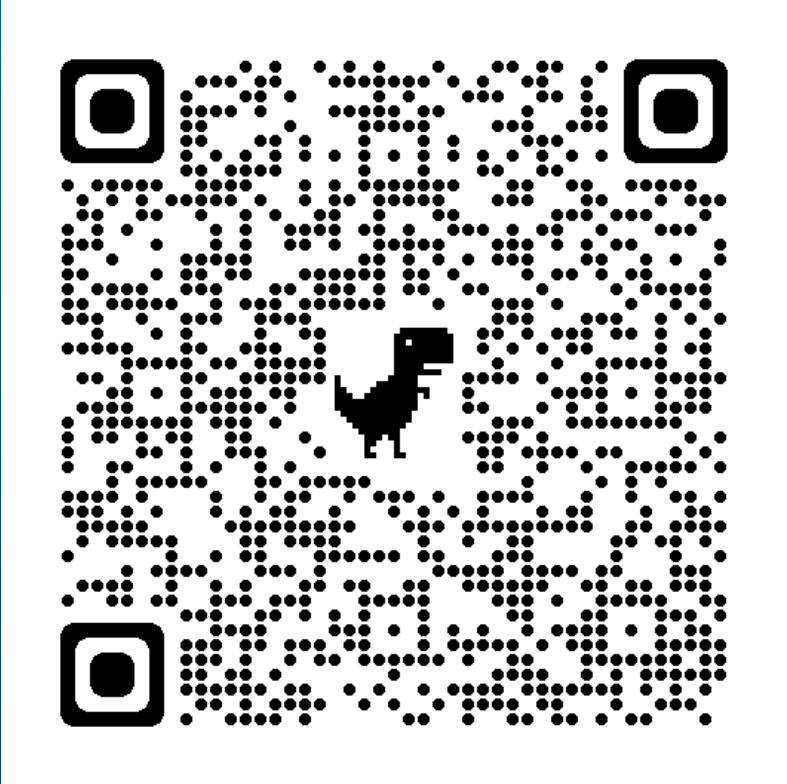
[Discover Experience Builder and how it's different from Web AppBuilder](#)

[Get hands-on experience with Experience Builder](#)

[Connect with users and developers](#)

[Increase your knowledge of Experience Builder](#)

A Glance at widget migration status



WAB migration documentation



```
view.goTo({
  center: [-126, 49]
})
.catch(function(error) {
  if (error.name !== "AbortError") {
    console.error(error);
  }
});
```

How to Migrate Your Apps

```
queryParams =
queryParams().apply {
  whereClause = "price > 200"
}
viewModelScope.launch {
```

The Goals

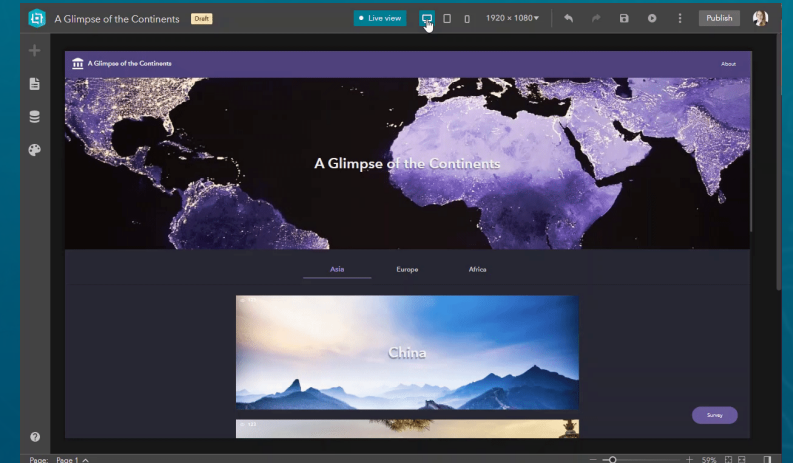
- Minimize the impact
- Perform better
- Modern look
- Great on Mobile



Know The Basics

Summary

- Start with a Web AppBuilder classic templates
- Use Window for the splash screen
- Drag & drop widgets or add them to Widget Controller
- Connect widgets with actions

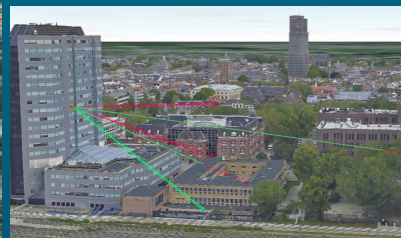
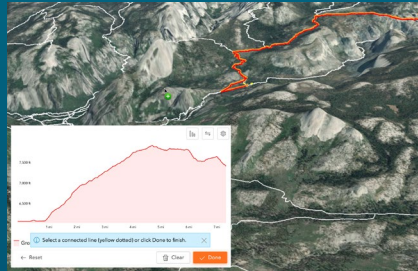


Beyond The Basics

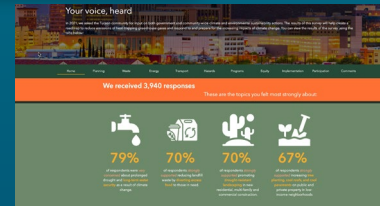
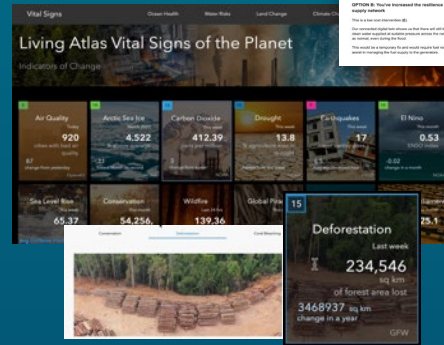
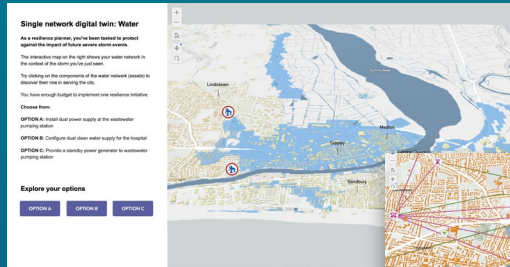
- Modify the layout and style
- 2D & 3D in one app
- Optimize mobile experiences
 - Change position, size, and style
 - Change content using the pending list
- More



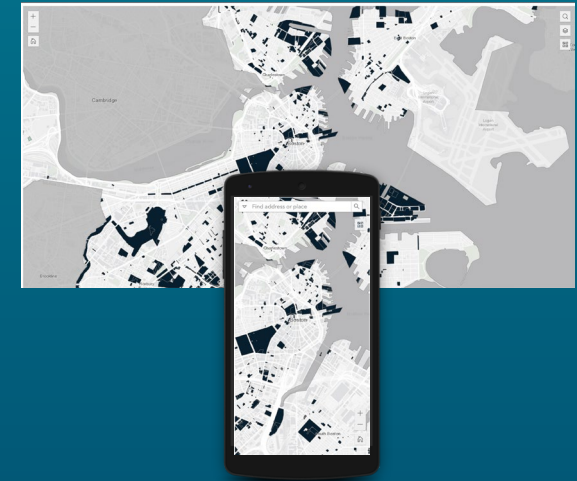
3D



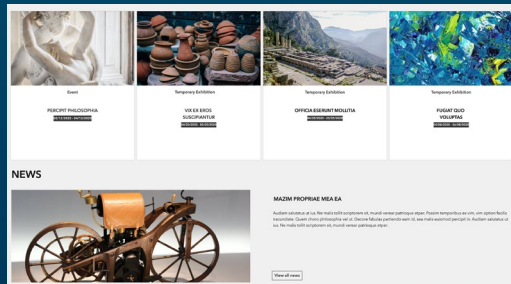
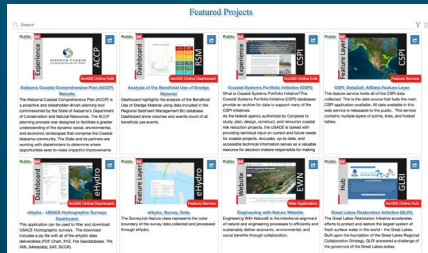
Web pages



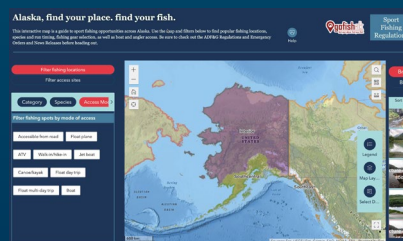
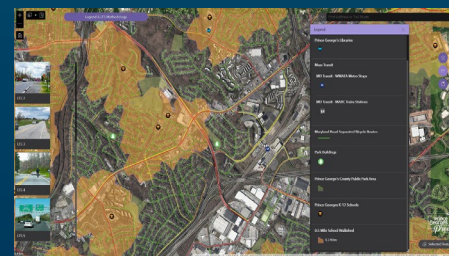
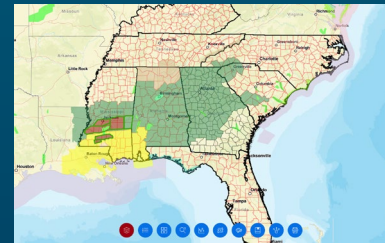
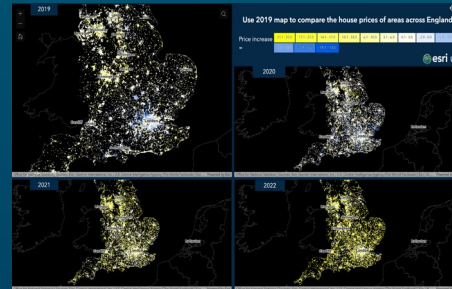
Mobile



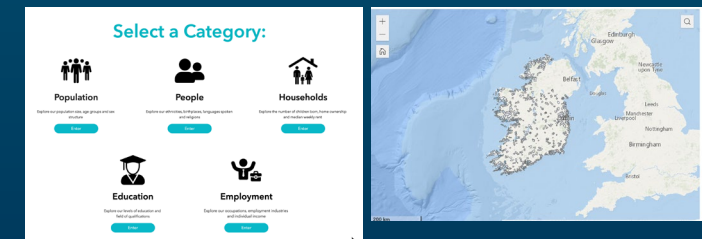
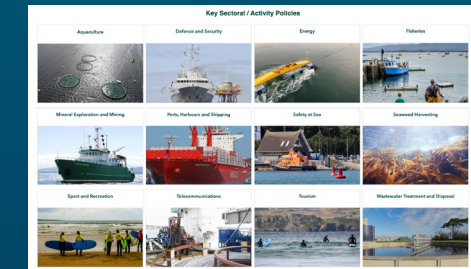
Gallery



Apps



Portal

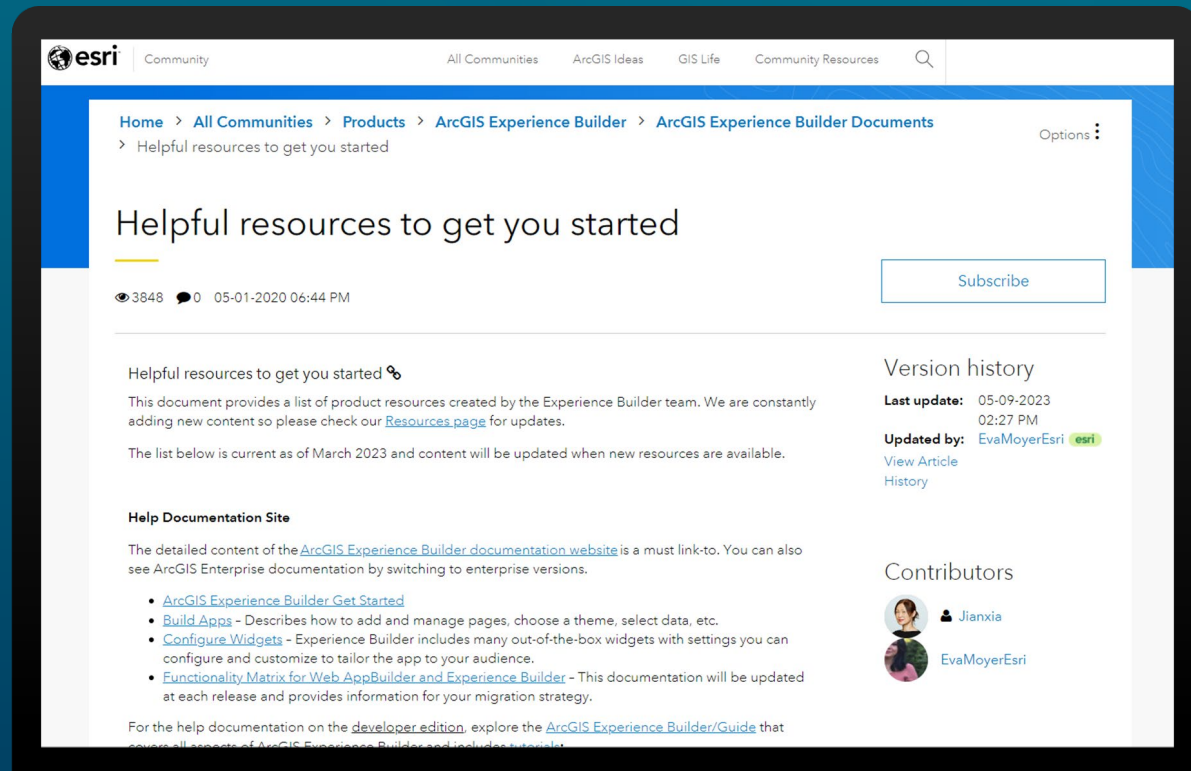


If you can envision it, you can build it

Amplify your data, maps, and apps by putting them all in one place.



Helpful Resources



The screenshot shows the Esri Community website page for 'Helpful resources to get you started'. The breadcrumb trail is: Home > All Communities > Products > ArcGIS Experience Builder > ArcGIS Experience Builder Documents. The page title is 'Helpful resources to get you started' with a 'Subscribe' button. The article content includes a description of the resources, a 'Help Documentation Site' section with a list of links, and a 'Version history' section showing the last update on 05-09-2023 by EvaMoyerEsri. Contributors listed are Jianxia and EvaMoyerEsri.

esri | Community | All Communities | ArcGIS Ideas | GIS Life | Community Resources | Search

Home > All Communities > Products > ArcGIS Experience Builder > ArcGIS Experience Builder Documents

Options

Helpful resources to get you started

3848 | 0 | 05-01-2020 06:44 PM

Subscribe

Helpful resources to get you started

This document provides a list of product resources created by the Experience Builder team. We are constantly adding new content so please check our [Resources page](#) for updates.

The list below is current as of March 2023 and content will be updated when new resources are available.

Help Documentation Site


The detailed content of the [ArcGIS Experience Builder documentation website](#) is a must link-to. You can also see ArcGIS Enterprise documentation by switching to enterprise versions.

- [ArcGIS Experience Builder Get Started](#)
- [Build Apps](#) - Describes how to add and manage pages, choose a theme, select data, etc.
- [Configure Widgets](#) - Experience Builder includes many out-of-the-box widgets with settings you can configure and customize to tailor the app to your audience.
- [Functionality Matrix for Web AppBuilder and Experience Builder](#) - This documentation will be updated at each release and provides information for your migration strategy.

For the help documentation on the [developer edition](#), explore the [ArcGIS Experience Builder/Guide](#) that covers all aspects of ArcGIS Experience Builder and includes tutorials.

Version history


Last update: 05-09-2023 02:27 PM


Updated by: [EvaMoyerEsri](#) 

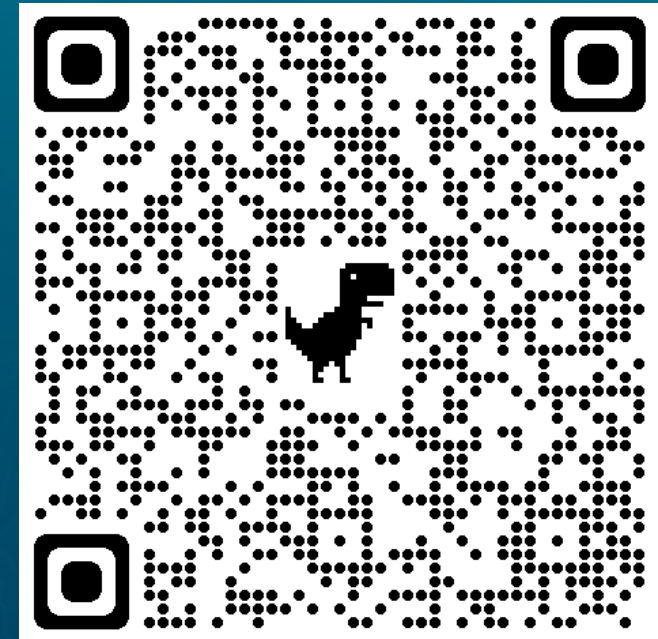
[View Article](#)

[History](#)

Contributors

 Jianxia

 EvaMoyerEsri



2024 Roadmap

ArcGIS Online Q1 2024 ArcGIS Enterprise 11.3

- Select widget
- Group filter
(Available in Filter widget)
- App URL parameters
- Non-modal window
- Report (ArcGIS Enterprise only)

ArcGIS Online Q2 2024 ArcGIS Enterprise 11.4

- Measure widget
- Building Explorer widget
- Google Analytics
- Raster data source
- Building scene layer

ArcGIS Online Q4 2024 ArcGIS Enterprise 11.4/11.5

- WAB mode
(A simple builder like WAB)
- View related records
- Overview Map widget
- My Location widget
- Batch attributes editing
- Image Measurement widget

These features are subject to change

Helpful Resources



- [ArcGIS Experience Builder Developer Edition SDK](#)
- [ArcGIS Experience Builder in ArcGIS Online Documentation](#)
- [ArcGIS Experience Builder in ArcGIS Enterprise](#)
- [Product page](#)
- [App Gallery](#)
- [Esri Community](#)
- [A full list of helpful resources](#)
 - Videos
 - Blogs
 - Learn lessons
 - Tutorials
 - FAQ

```
// show the compass and pass the
mapRotation state data
Compass(rotation = mapRotation) {
  // reset the ComposableMapView point
rotation to point north using the
mapViewModel
  mapViewModel.setViewpointRotation(0.0)
}
```



esri[®]

**THE
SCIENCE
OF
WHERE**[®]

```
const layerList = new LayerList({
  view: view
});

// Add widget to the top right corner
of the view
view.ui.add(layerList, "top-right")
```

```
<arcgis-map zoom="4" center="-118,34">
```